



SPATIAL AND REGIONAL PLANNING DESIGN: Case study Initial materials for local plan covering the Głusk district

*Katarzyna Pałubska PhD, Eng.
Małgorzata Sosnowska PhD, Eng. of Architecture*



Erasmus+

Location of the District

The Głusk district is located in the eastern part of Lublin. From the north, the following city districts adjoin: Kośminek, Dziesiąta and Wrotków, and from the west - Zemborzyce. From the south and east, this area is adjacent to the rural commune of Głusk. The Głusk district is separated from the Abramowice District by the Czerniejówka River.

Głusk is located on the right bank of Lublin, located south of the Bystrzyca valley, which crosses the city from the south-west to the north-east. Głusk as a district located east of the Czerniejówka River lies within the Świdnicki Plateau.



The landform of the Głusk district

The Głusk district is located on the Świdnicki Plateau.

The Głusk landform is varied. There are two distinct hills with a general east-west direction separated from each other and from neighboring areas with notably deep, dry valleys, clearly visible in the landscape.

Initial materials for local plan covering the Głusk district:

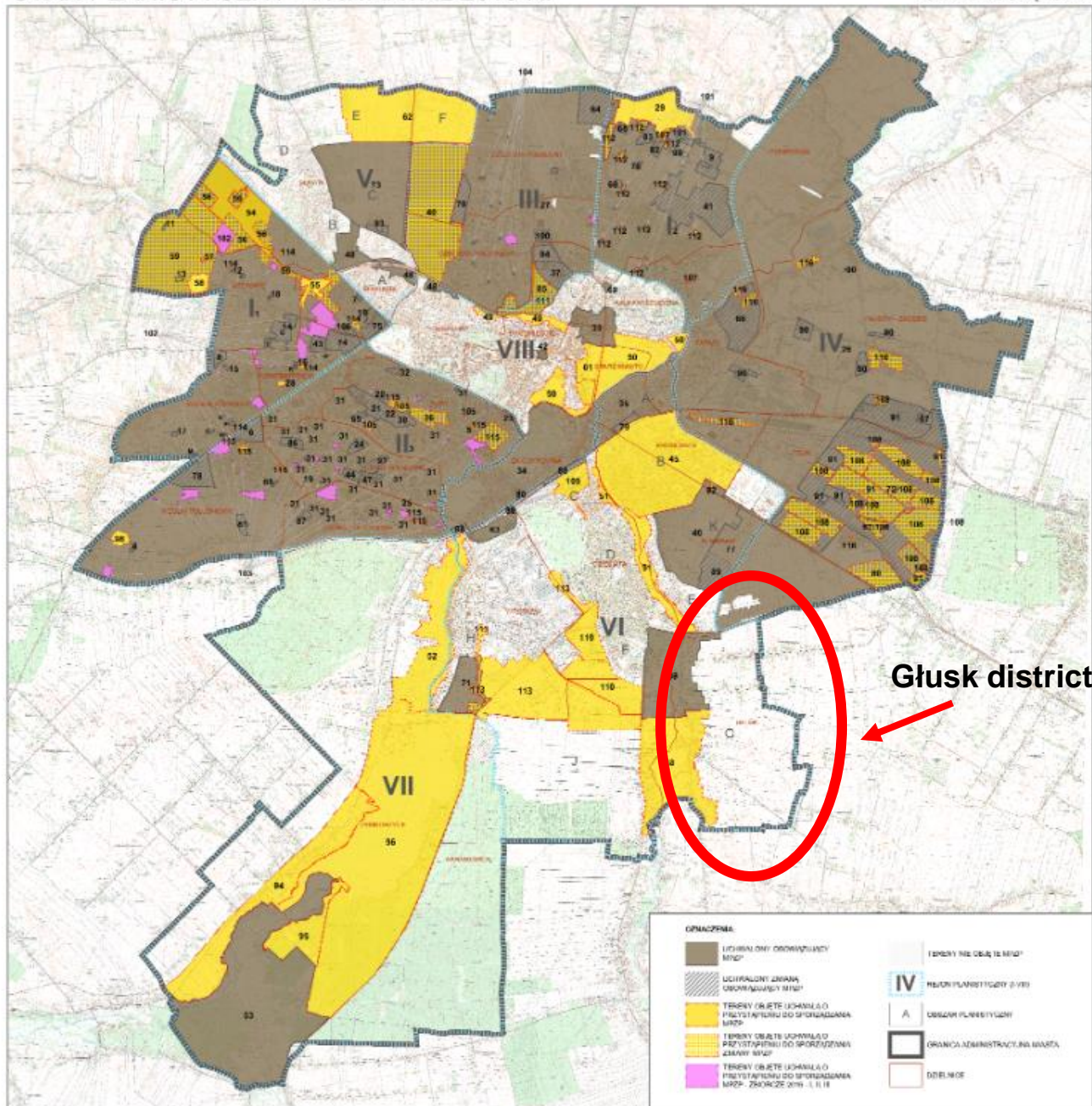
- Plan zagospodarowania przestrzennego województwa Lubelskiego (Spatial Development Plan For the Lublin Voivodeship) <https://umwl.bip.lubelskie.pl/index.php?id=935&akcja=szczegoly&p2=1036021>
- Strategia Rozwoju Lublina na lata 2013-2020 (Lublin Development Strategy for years 2013-2020) https://bip.lublin.eu/gfx/bip/userfiles/_public/import/rada-miasta-lublin-vii-kaden/sesje-rm-lublin/uchwaly-rm-lublin/vi-kadencja-rady-miasta-lubli/sesja-nr-xxviii-z-dnia-28-02-/uchwala-nr-693xxviii2013-rady-/76195_urm_693_xxviii_2013.pdf
- System informacji przestrzennej Lublina (The spatial information system of Lublin) <https://geoportal.lublin.eu>
- Current Spatial Development Conditions and Directions Study for Lublin [https://bip.lublin.eu/strategia-i-planowanie/planowanie-przestrzenne/studium-uwarunkowan-i-kierunkow-zagospodarowania-przestrzennego-miasta-lublin/obowiazujace-studium-uwarunkowan-i-kierunkow-zagospodarowania-przestrzennego-m-lublin/obowiazujace-studium-uwarunkowan-i-kierunkow-zagospodarowania-przestrzennego-m-lublin,2,23610,2.html](https://bip.lublin.eu/strategia-i-planowanie/planowanie-przestrzenne/studium-uwarunkowan-i-kierunkow-zagospodarowania-przestrzennego-miasta-lublin/obowiazujace-studium-uwarunkowan-i-kierunkow-zagospodarowania-przestrzennego-m-lublin/obowiazujace-studium-uwarunkowan-i-kierunkow-zagospodarowania-przestrzennego-m-lublin/studium-uwarunkowan-i-kierunkow-zagospodarowania-przestrzennego-m-lublin,2,23610,2.html)
- Draft Spatial Development Conditions and Directions Study for Lublin <https://geoportal.lublin.eu>
- Basic map of the Głusk district <https://geoportal.lublin.eu>

MIASTO LUBLIN

STAN PLANISTYCZNY - I KWARTAŁ 2019 R.

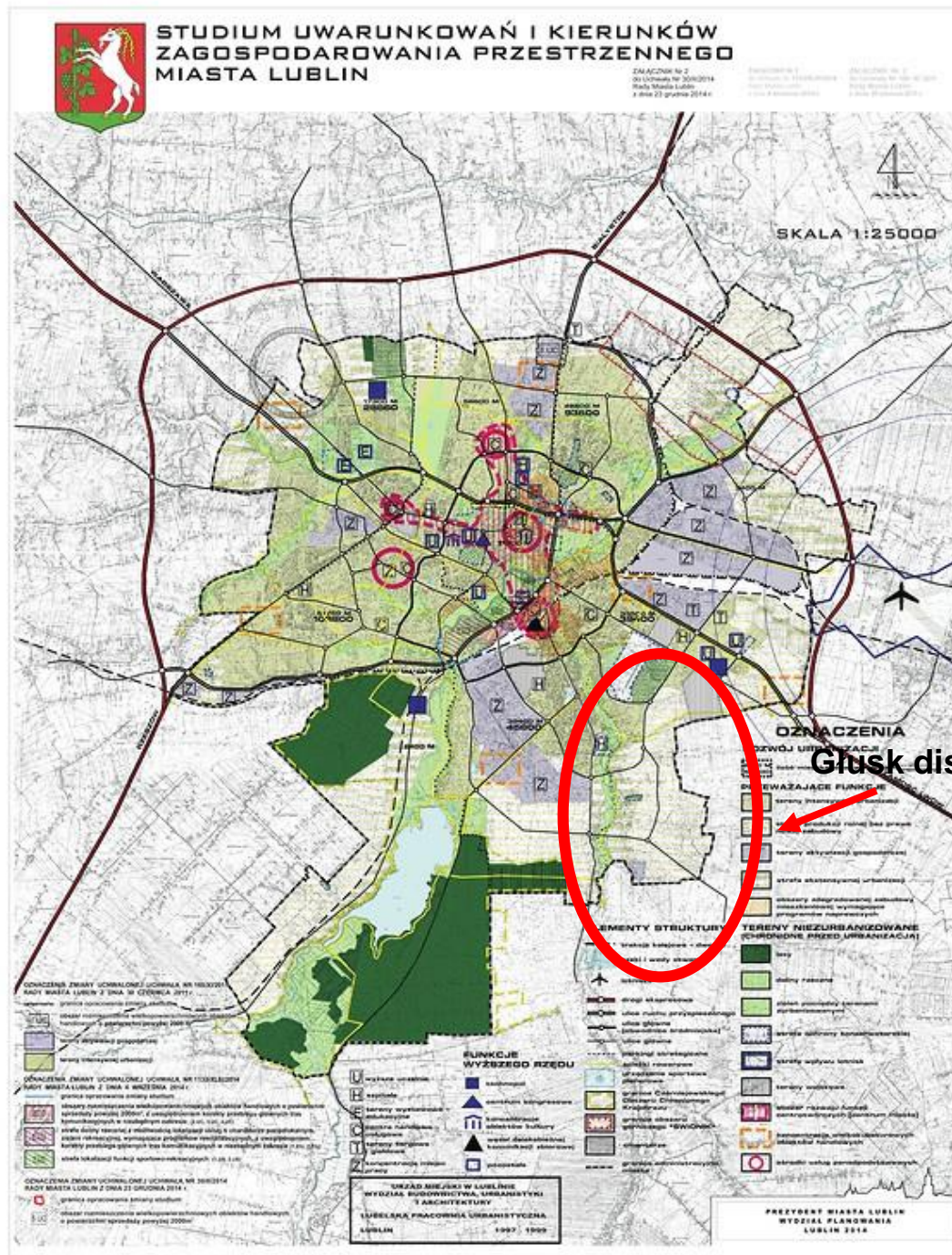
SKALA POGLĄDOWA

Areas in Lublin covered by valid MPZPs



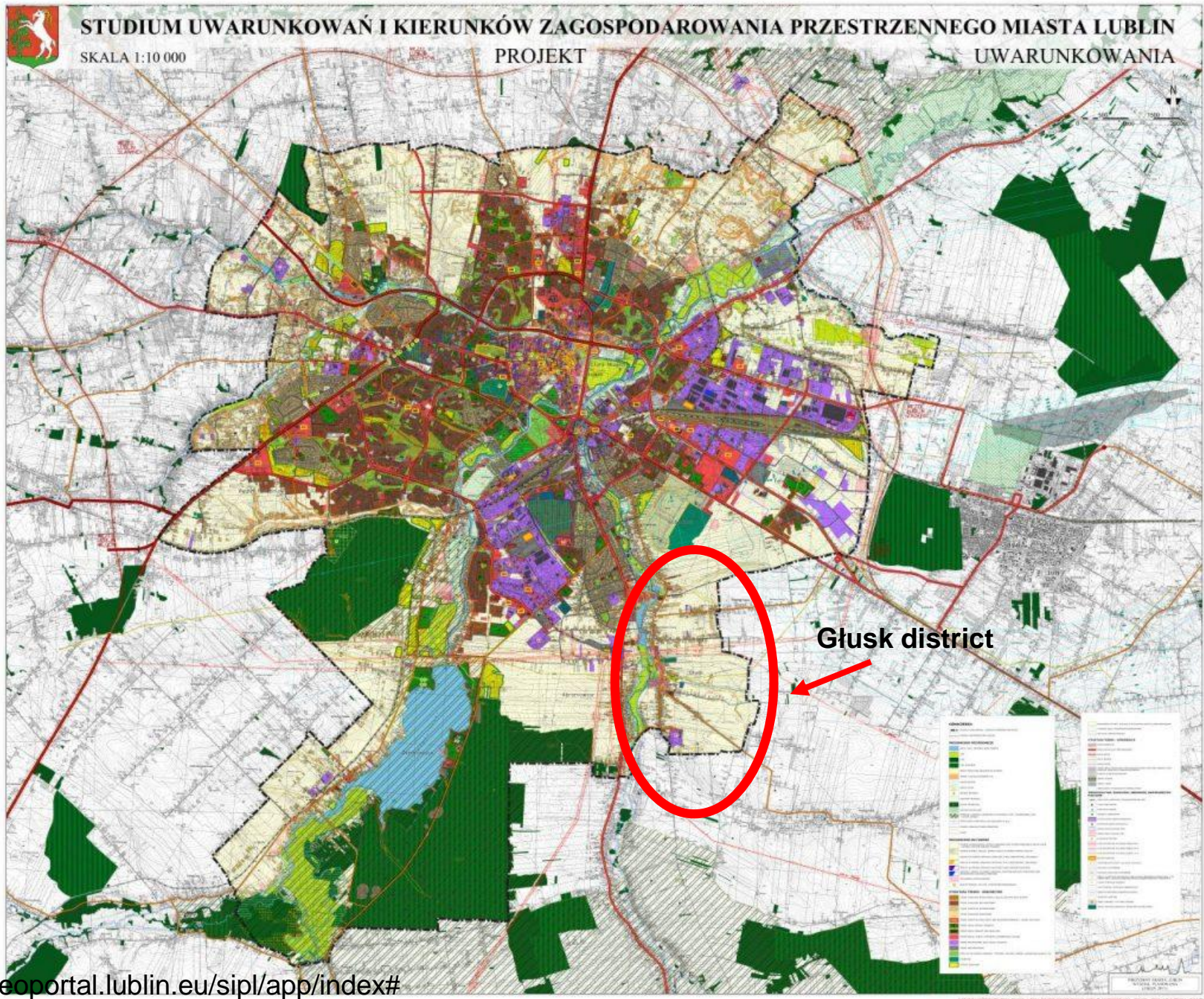
Current Spatial Development Conditions and Directions Study for Lublin

<https://bip.lublin.eu/strategia-i-planowanie/planowanie-przestrzenne/studium-uwartkowan-i-kierunkow-zagospodarowania-przestrzennego-miasta-lublin/obowiazujace-studium-uwartkowan-i-kierunkow-zagospodarowania-przestrzennego-m-lublin/obowiazujace-studium-uwartkowan-i-kierunkow-zagospodarowania-przestrzennego-m-lublin/studium-uwartkowan-i-kierunkow-zagospodarowania-przestrzennego-m-lublin,2,23610,2.html>



Głusk district

Draft Spatial Development Conditions and Directions Study for Lublin

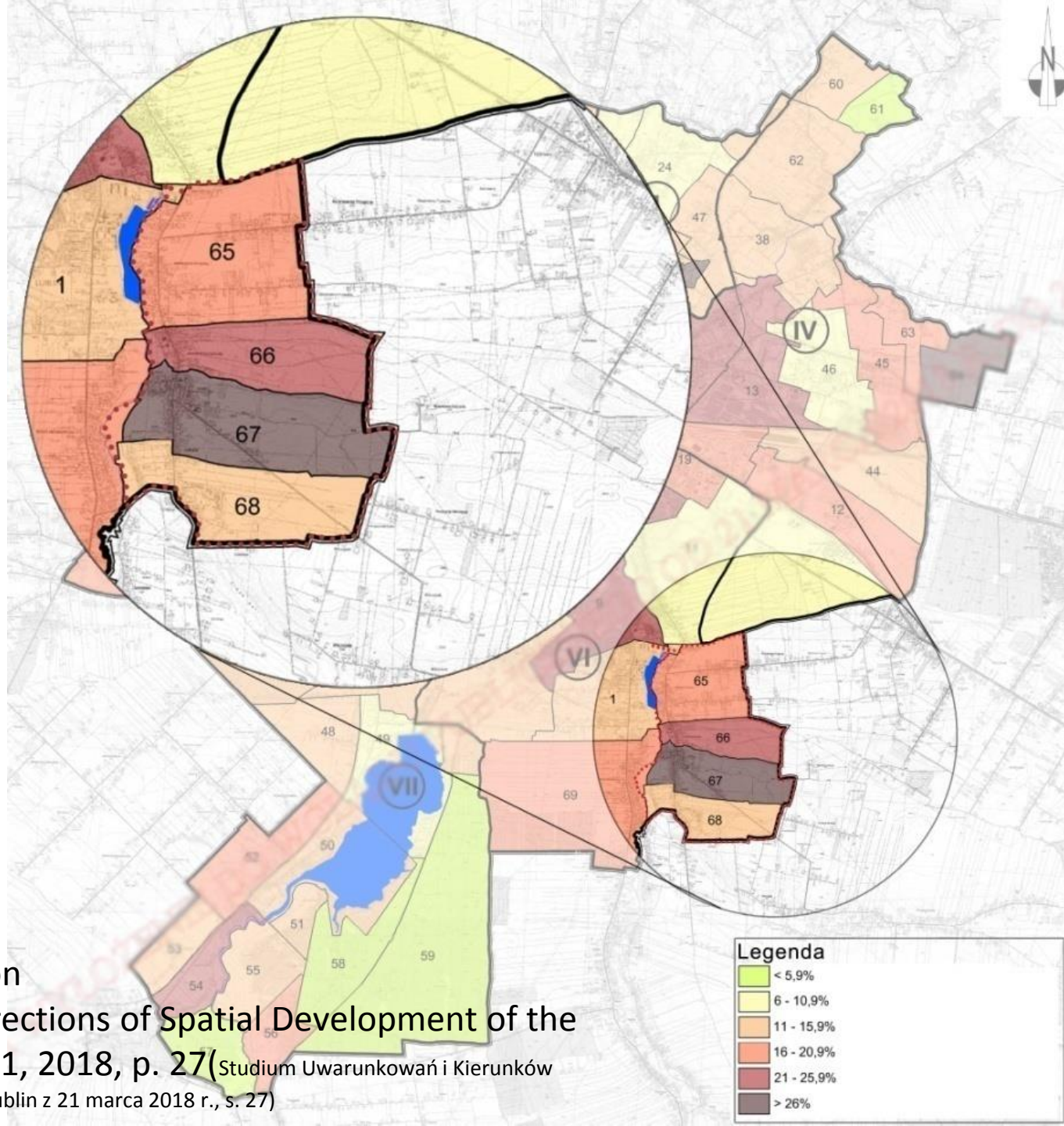


Głusk in numbers / basic information

Głusk, with the area of 5.7 km² (3.8% of the city's area), is inhabited by nearly 2142 people [bip.lublin.eu]

Population density is about 368 persons / km².

A high number of post-working age people has been noted in the studied area.



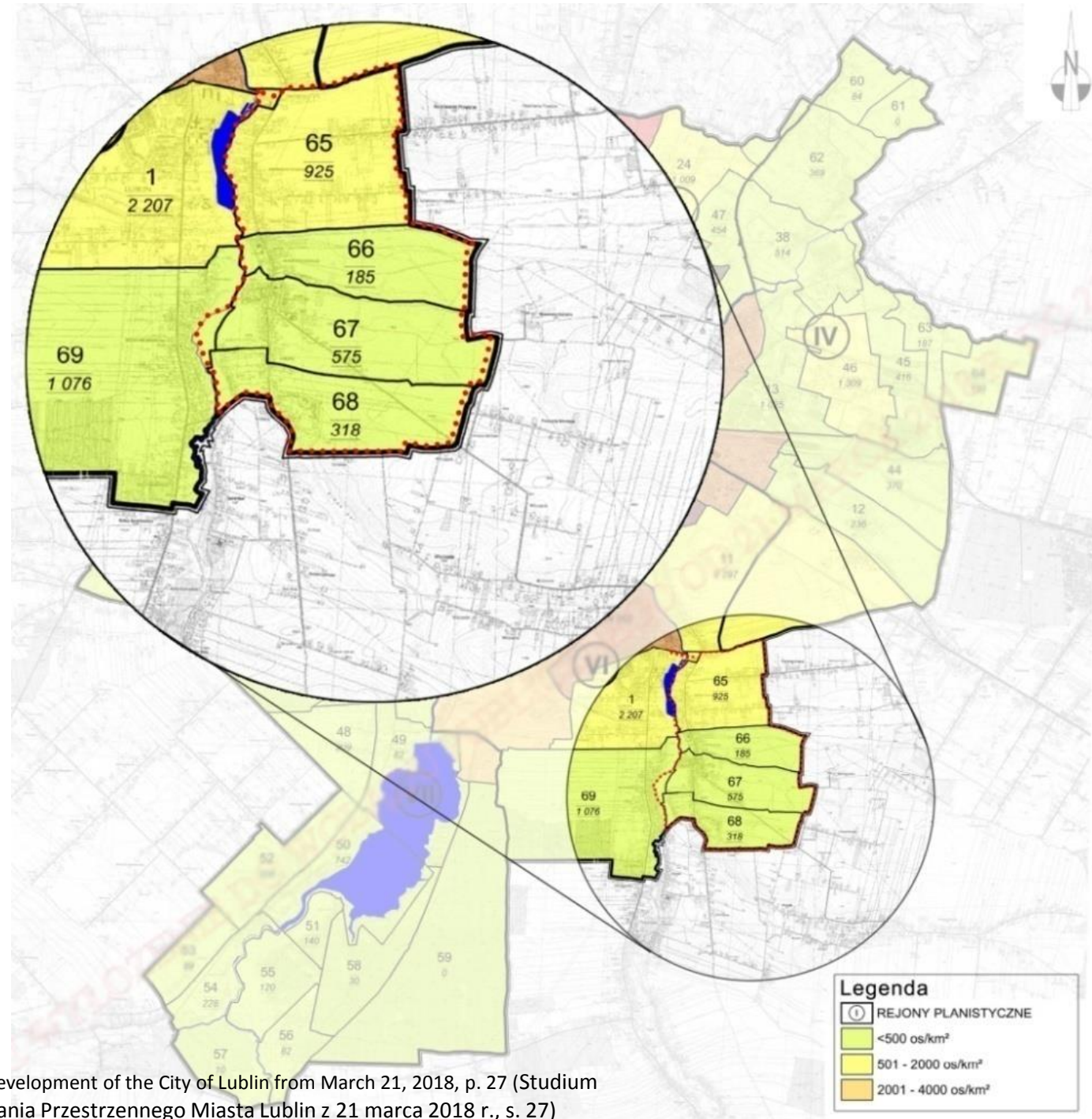
Post-working age population

Study of Conditions and Directions of Spatial Development of the

City of Lublin from March 21, 2018, p. 27 (Studium Uwarunkowań i Kierunków

Zagospodarowania Przestrzennego Miasta Lublin z 21 marca 2018 r., s. 27)

In the Głusk planning area, the average population density is around 368 persons / km²



Population density

Study of Conditions and Directions of Spatial Development of the City of Lublin from March 21, 2018, p. 27 (Studium Uwarunkowań i Kierunków Zagospodarowania Przestrzennego Miasta Lublin z 21 marca 2018 r., s. 27)

Historical overview

Głusk was founded by Tomasz Kazimierz Głuski from Drzewice, who also owned nearby towns such as Wilczopole, Mętów, Ćmiłów, Abramowice, Skrzynice.

Głusk was an independent agricultural town. In 1686 it was granted town privileges by King Jan III Sobieski.

Głusk has retained its historical urban layout and some buildings (entrance gate to the church, church, town hall).

After in the 1920s, the town passed into the hands of the Grabowski family, and Głusk entered its less prosperous age. In 1869/1870 it lost its town privileges.

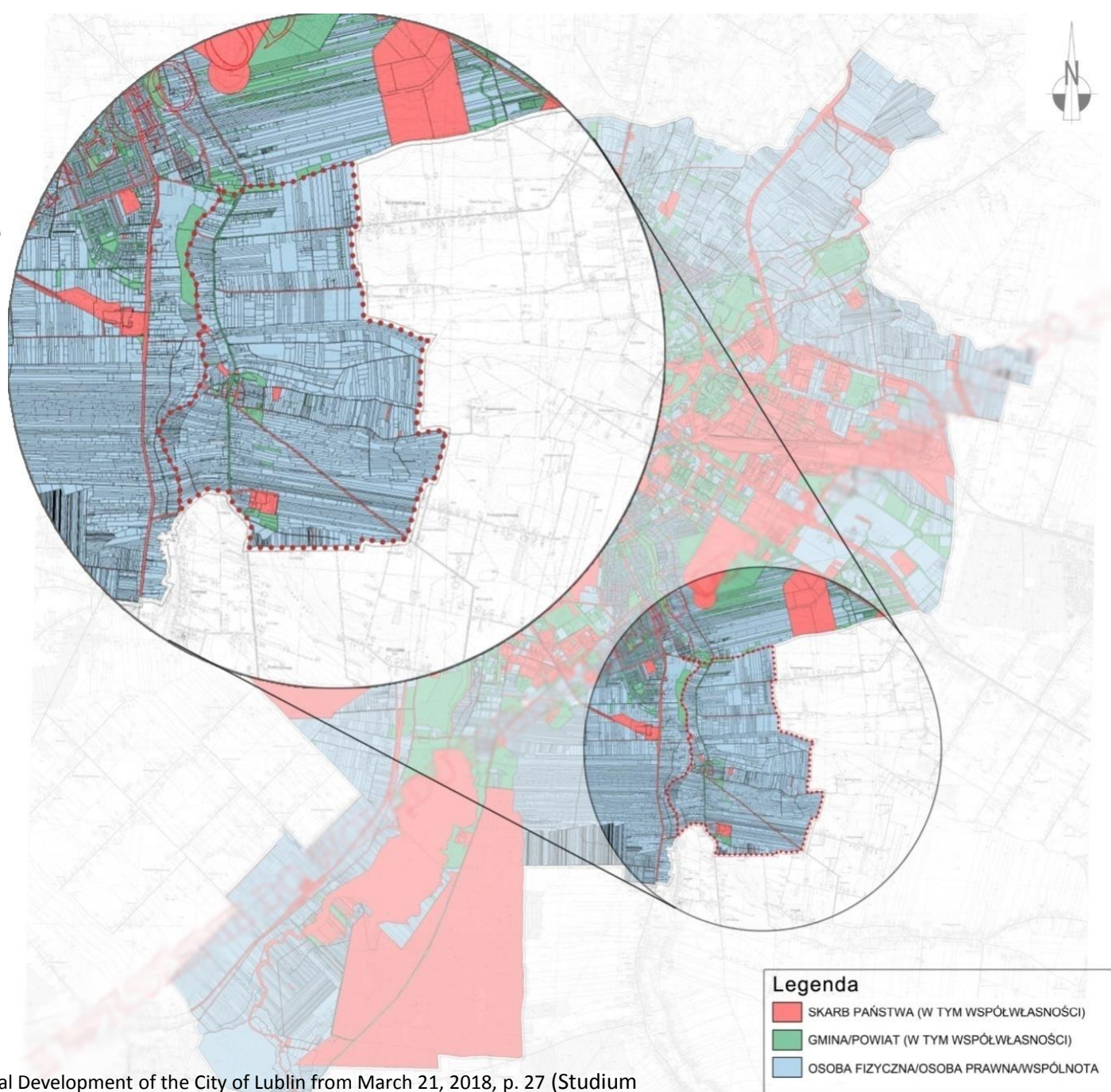
As a result of the 1973 administrative reform, Głusk became the seat of the Głusk commune. And in 1987 it was incorporated into the administrative borders of Lublin. The northern part of the Głusk commune together with Abramowice was included in the city limits of Lublin.

From the time of its location in the 17th century up to the 1980s, Głusk was an independent town with a clearly visible urban layout - with the Market Square and the historic town hall and regular, densely located, though low-rise buildings along the streets leading to it.

In the northern part of the district, at ul. Głuska there is a historic parish church named after St. James the Apostle with accompanying properties and a historical cemetery.

Analysis of land ownership

In the Głusk district, the vast majority of land is private land. Only some plots are owned by the Treasury or belong to the commune.



Głusk land ownership

Study of Conditions and Directions of Spatial Development of the City of Lublin from March 21, 2018, p. 27 (Studium Uwarunkowań i Kierunków Zagospodarowania Przestrzennego Miasta Lublin z 21 marca 2018 r., s. 27)

basic map of a fragment of the Głusk district





Former town hall in Głusk



Square park near the former town hall in Głusk

Historical masonry building in Głusk



Głuska St





Tree shrine



Historical house at. Handlowa St 9

Historical wooden building

Historical house at. Głuska St 191



Church entrance gate



Masonry town house at Handlowa St 21

School building at Zdrowa St



Saint Jacob the Apostle Church





House at Handlowa St 4



Historical houses at. Miodowa St

Historical house at. Głuska St 175



Historical house at. Handlowa St 7





**Project "SURE - Sustainable Urban Rehabilitation in Europe"
implemented in frames of Erasmus+ Programme
Key Action 2: Strategic Partnership Projects
Agreement n° 2016-1-PL01-KA203-026232**

This publication has been funded within support from the European Commission.

Free copy.

This publication reflects the views only of the author, and the Commission cannot be held responsible for any use which may be made of the information contained therein.

**Co-funded by the
Erasmus+ Programme
of the European Union**





Project "SURE - Sustainable Urban Rehabilitation in Europe" implemented in frames of Erasmus+ Programme Key Action 2: Strategic Partnership Projects Agreement n° 2016-1-PL01-KA203-026232



This work is licensed under a [Creative Commons Attribution-NonCommercial-ShareAlike 4.0 International License](https://creativecommons.org/licenses/by-nc-sa/4.0/).