



## *Museology and Museography*



Erasmus+

# MUSEOLOGY AND MUSEOGRAPHY

## 9. Berlin. Neues Museum



**SAPIENZA**  
UNIVERSITÀ DI ROMA

**Prof. Calogero Bellanca**

# Museology and Museography

PROGRAMME OF LECTURES		CONTACT HOURS		
		LECTURES	EXERCISE	DESIGN
1	Presentation: preparatory reading and history of adaptation and museography, from XIX century to 1955.	3		
2	History of adaptation and museography after second world war to Charter of Venice 1964.	3	2	
3	Adaptation and museography from 1985 to 1987: an interesting period for museography in Italy.	3		
4	Adaptation and museography in Italy from 1987 to 1997.	3	1	
5	Adaptation and museography in Europe, until the first years of the new century.	3	1	
6	Adaptation and museography in Europe, the last years of XX century and the first years of the new century.	4	2	2
7	Spain, Madrid. Caixa Forum and Museo Prado.	4		
8	Spain, Madrid. Thyssen-Bornemisza Museum, Reina Sofia Museum, Archeological Museum.	3		
9	Berlin. Neues Museum.	4	2	2
10	Berlin. Museum out of the museum.	3		2
11	Amsterdam. Rijksmuseum.	3		
12	Amsterdam. "House-museums". Historic Museum of the city.	4	2	2
13	Ravenna. Biblioteca Classense.	3	2	
14	Siena. Santa Maria della Scala.	3	1	
15	Roma, Terme di Diocleziano Palazzo Altemps.	4	2	2
		<b>50</b>	<b>15</b>	<b>10</b>



***NINTH LESSON:***  
***MUSEOLOGY AND MUSEOGRAPHY***  
***BERLIN, Neues Museum***



Introduction to a touristic city (CB 2018)





Pergamon Museum (CB 2017)

# *Neues Museum*

Restoration and addition by David Chipperfield in the early 2000s (CB 2009)



# *Neues Museum*

New entrance in construction, June 2018 (CB 2018)





# *Neues Museum*

The dialogue between ancient and contemporary...? (CB 2018)

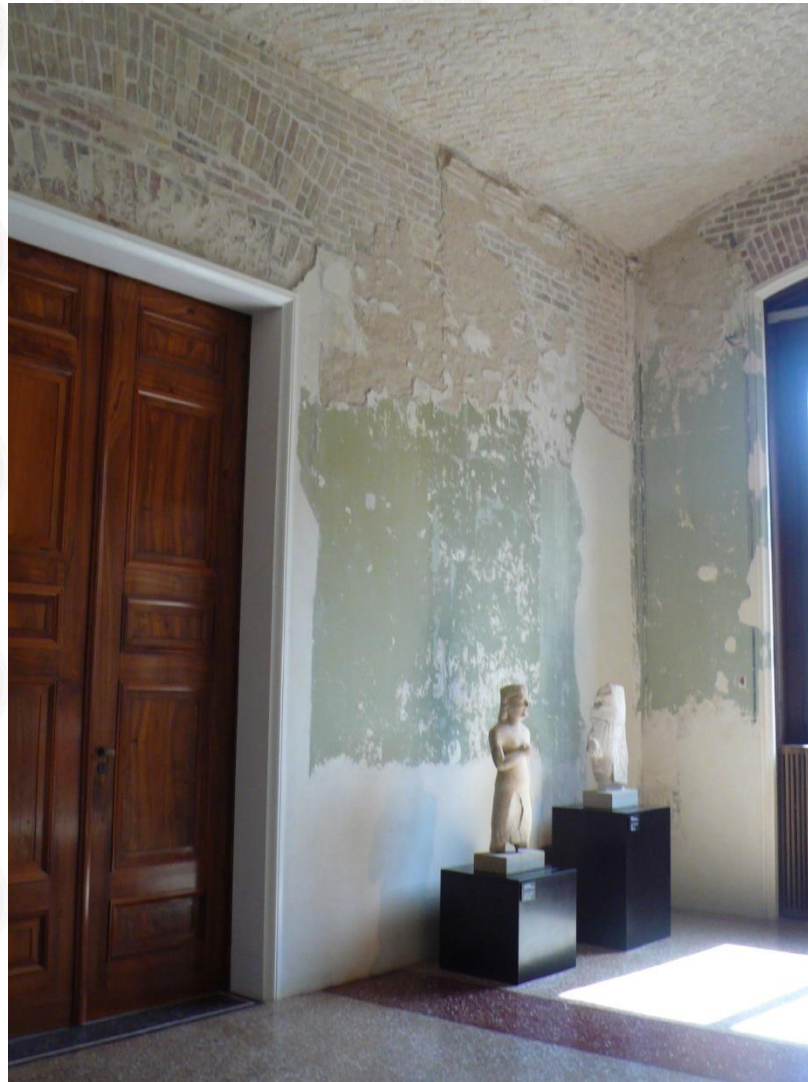




## *Neues Museum*

The conservation of the architecture with critic restoration.  
(CB 2018)

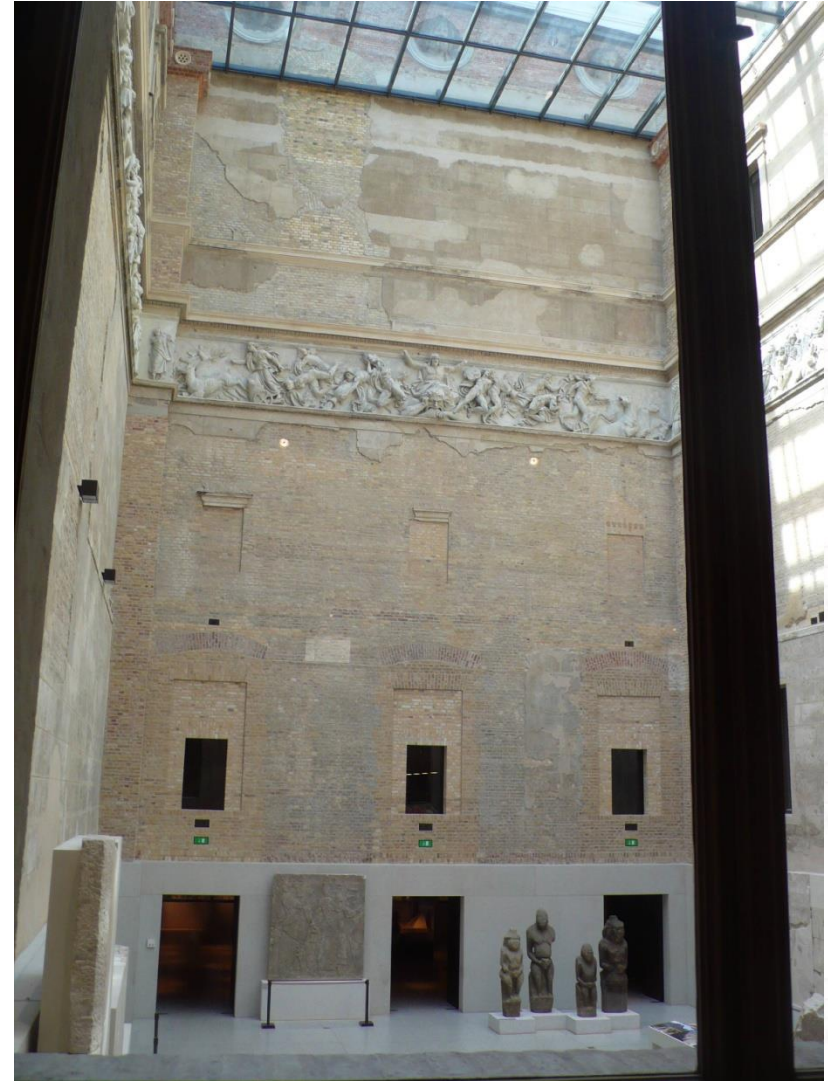




An example of Conservation in Neues Museum in Berlin (CB 2018)

# *Neues Museum*

Restoration of surfaces  
(CB 2018)







The insertion of the new main staircase  
(CB 2018)



A detail of the modern handrail  
(CB 2018)

# *Neues Museum*

Conservation of ancient spaces (CB 2018)





## *Neues Museum*

Nefertari,  
a show case protection (CB  
2018)







Reconfiguration of the ancient Babilonia monuments  
(CB 2018)

# Neues Museum

A contemporary walkway  
(CB 2018)





**Project "SURE - Sustainable Urban Rehabilitation in Europe"  
implemented in frames of Erasmus+ Programme  
Key Action 2: Strategic Partnership Projects  
Agreement n° 2016-1-PL01-KA203-026232**

**This publication has been funded within support from the European Commission.**

**Free copy.**

**This publication reflects the views only of the author, and the Commission cannot be held responsible for any use which may be made of the information contained therein.**

**Co-funded by the  
Erasmus+ Programme  
of the European Union**

