



PROTECTION OF MONUMENTS AND HISTORIC TOWNS



Erasmus+

PROTECTION OF MONUMENTS AND HISTORIC TOWNS

HERITAGE VALUE ASSESSMENT SYSTEM /SV SYSTEM – CASE STUDY – 1ST LEVEL/

BOGUSŁAW SZMYGIN

LUBLIN UNIVERSITY OF TECHNOLOGY

The value assessment aims:

- A. to select the objects that should be regarded as monuments
- B. to create a public acceptance for heritage protection
- C. to define the elements of the monument, which are the material carrier of values - when the intervention is necessary and only some elements could be protected
- D. to determine the rules and forms of monument protection based on the determination of the consequences of the intervention

Generally, there are two levels (stages) historic monument assessment:

Level 1. The monument value assessment - the overall value of the monument (without indications for its protection).

Level 2. The analysis of the value of the monument - the assessment of the value of the elements of the monument; identification of values attributes (in order to determine the forms of its protection and the range of possible intervention).

DUSZNIKI PAPER MILL

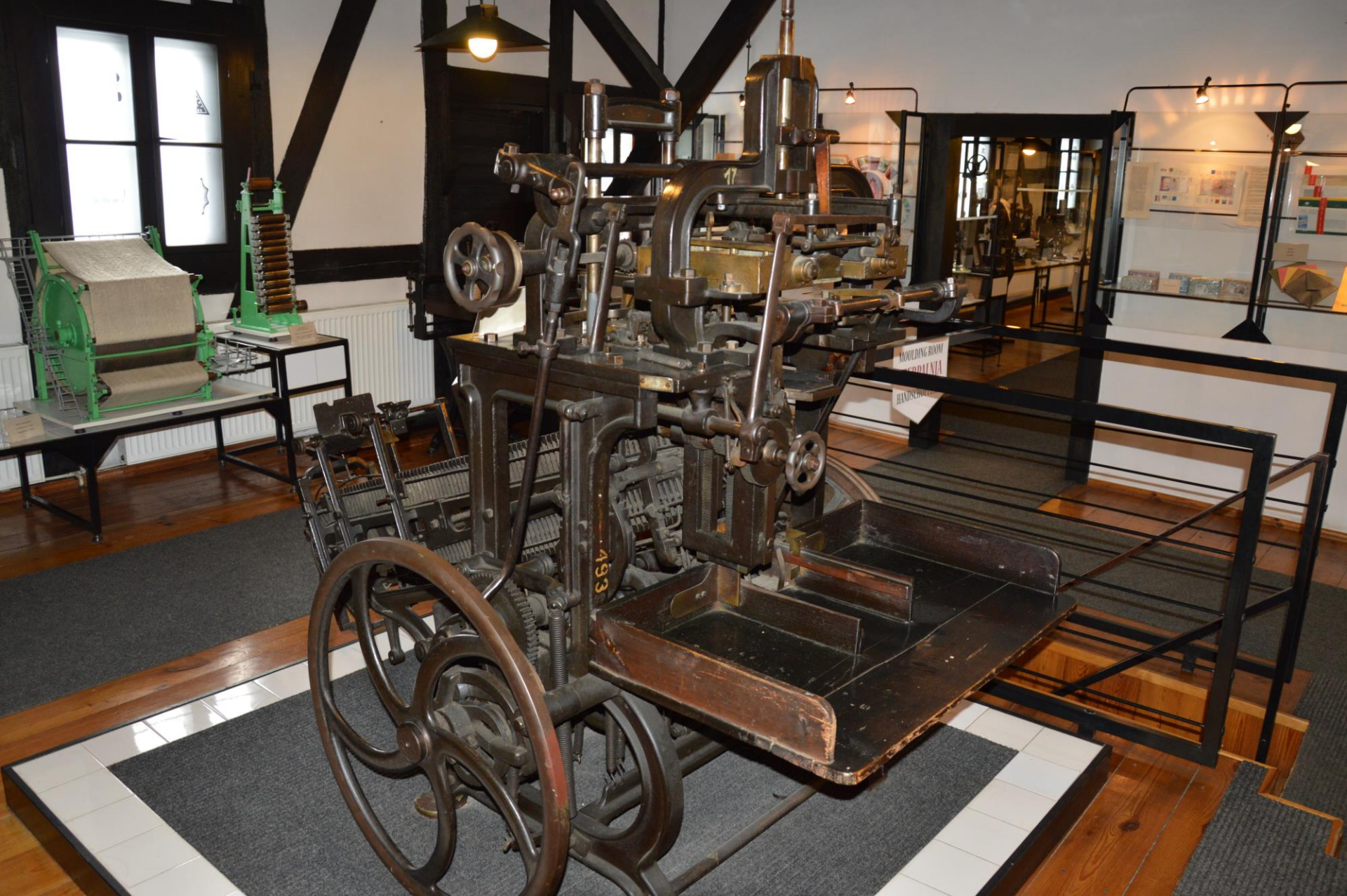












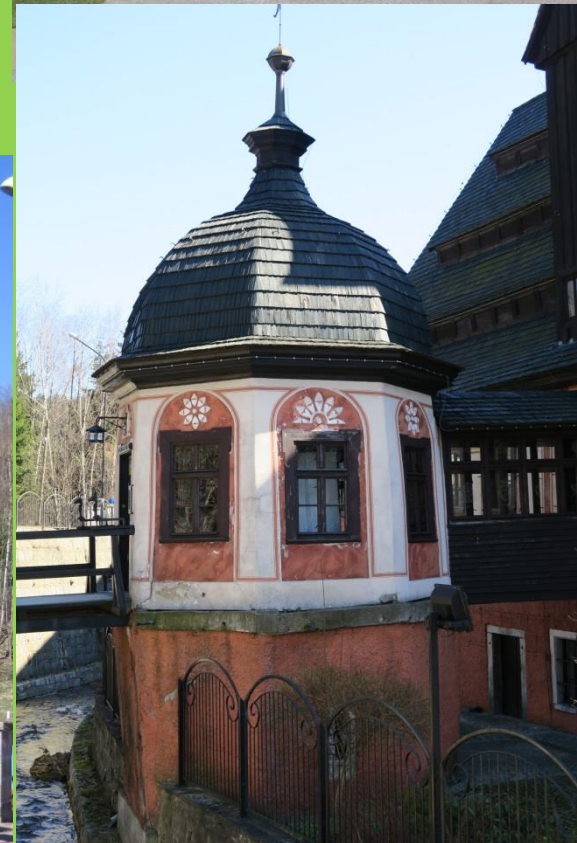
Paper Mill in Duszniki-Zdrój Museum of Papermaking



Complex of buildings consist of:

- Paper Mill - the main building – wooden/brick; 16th-18th century
- Drying house – wooden; 18th century
- Entrance pavilion – wooden/brick; 18th century

One of the oldest preserved paper mills in Europe



1 st LEVEL -
The monument value
assessment

Stages of assessment

- under the level 1:

1. Characteristics and analysis of the monument in order to select features, for which a reference group will be specified.

The following features characterize the monument: identified features do not need to be linked, does not determine their validity, they are significant for the characteristics of the monument/

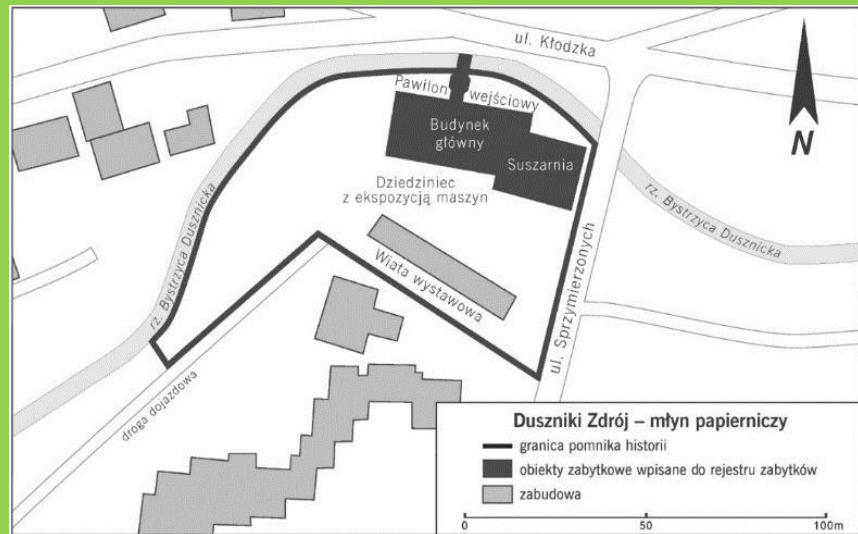
- wooden object with the characteristic form
- continuity of functions/production process
- distinctive and important product - paper
- elements of the historic production line / equipment eg. sieves/
- the historic method of production of paper
- polychrome
- paper museum
- research on papermaking

The following features characterize the monument:

- Localization and surroundings



Layout of buildings



- wooden and wooden/brick objects with the characteristic historical form:

Paper mill – the main building



Drying house



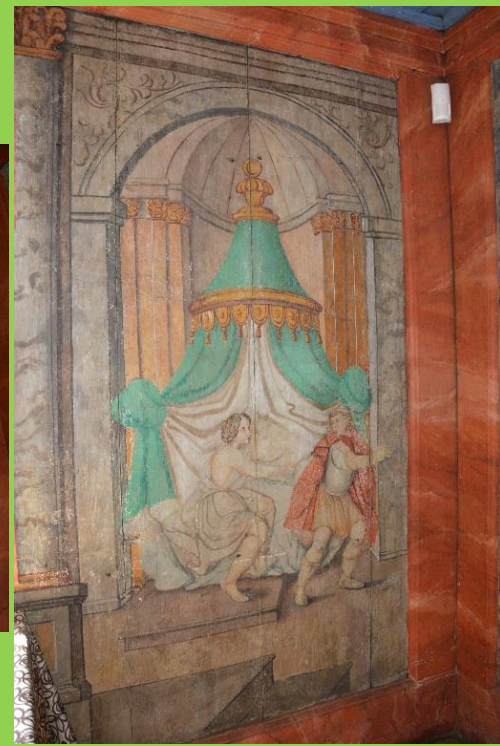
Entrance pavilion



- Internal historic form of buildings



- The decor of interior – polichromy

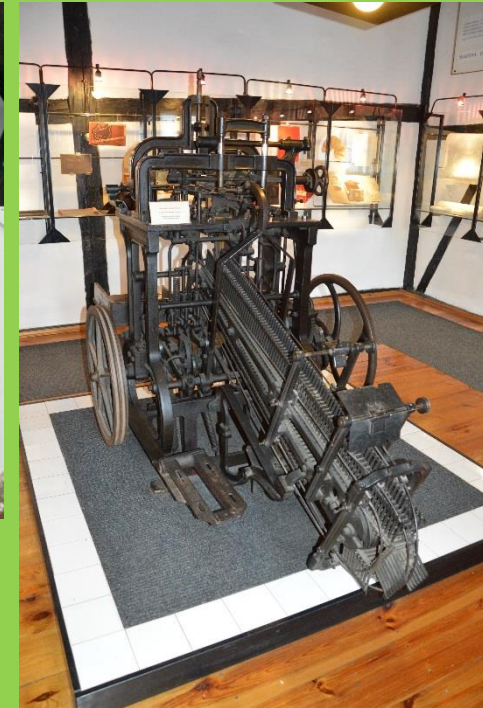


- Material and construction



- Equipment – historic elements and museum facilities

Elements of the historic production line/equipment eg. sieves/



Equipment connected with residential function



- Function of the object

Continuity of functions/production process

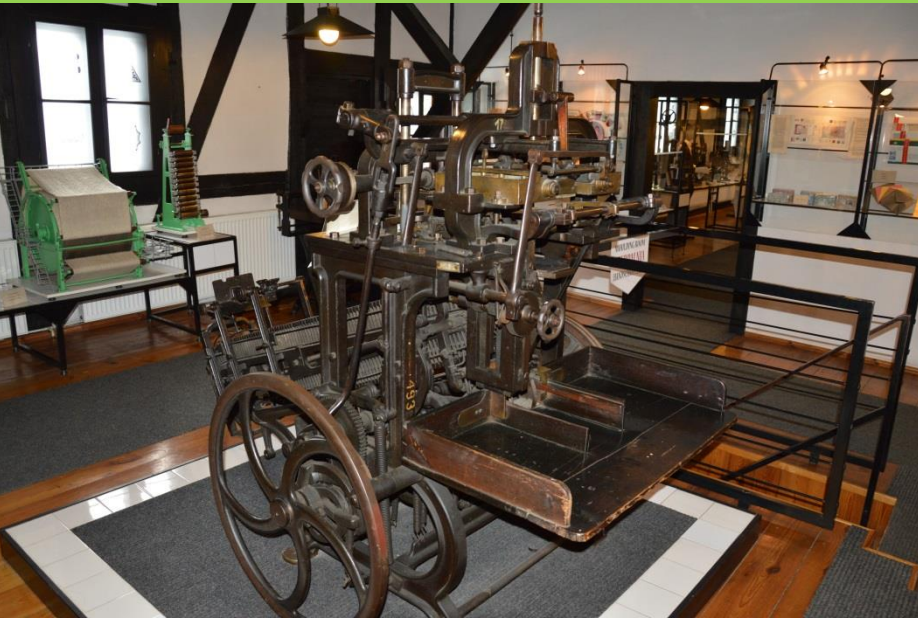


Residential function



- Function of the object

Museum function



Stages of assessment

- under the level 1:

2. The indication of the reference group
(which will be a comparative context)

A group of monuments which constitutes the reference group is result of a combination of the following items.

Period of creation:

-17th-18th century

Territory - the area of the analysis:

-monuments of Silesia/Central Europe/Europe

Functional characteristics of a monument:

-paper mills

-industrial buildings

-technological processes/historic and continued

-crafts and the pre-industrial production/gradual improvement

-a combination of residential and manufacturing functions

The material (fabric) characteristics of the monument:

- wooden and wooden/brick buildings

Equipment – historic elements:

- elements of the historic production line/equipment
- equipment connected with residential function

Style - design formation:-paper mills

-Baroque art

-wall paintings

Reference group is a mixture of listed items- they define the boundaries and areas of interest.

Reference group: Paper Mills//wooden-masonry buildings/craft and pre-industry production/continuity of production process /Central Europe / monuments of the 17TH- 18TH century – the Baroque/

Stages of assessment

- under the level 1:

3. The determination of the assessment criteria - to verify the features as the basis for the assessment

- object form –
- object function –
- object equipment –
- object decorations –
- period of object construction

Stages of assessment

- under the level 1:

4. The assessment of the value of the monument in the light of the selected criteria in relation to the reference group

SUMMARY:

- object form –
paper mills, the oldest, unique, wooden/brick,
preserved historical form
- object function –
paper production, continuity of functions, apartment
- object equipment –
preserved historical items + extra museum objects
- object decorations –
valuable wall paintings; other elements
- period of object construction –
XVII th century / the oldest still existing



**Project "SURE - Sustainable Urban Rehabilitation in Europe"
implemented in frames of Erasmus+ Programme
Key Action 2: Strategic Partnership Projects
Agreement n° 2016-1-PL01-KA203-026232**

This publication has been funded within support from the European Commission.

Free copy.

This publication reflects the views only of the author, and the Commission cannot be held responsible for any use which may be made of the information contained therein.

**Co-funded by the
Erasmus+ Programme
of the European Union**





Project "SURE - Sustainable Urban Rehabilitation in Europe" implemented in frames of Erasmus+ Programme Key Action 2: Strategic Partnership Projects Agreement n° 2016-1-PL01-KA203-026232



This work is licensed under a [Creative Commons Attribution-NonCommercial-ShareAlike 4.0 International License](https://creativecommons.org/licenses/by-nc-sa/4.0/).