



Museology and Museography



Erasmus+

MUSEOLOGY AND MUSEOGRAPHY

3.

Adaptation and museography from 1985 to 1987: an interesting period for museography in Italy.



SAPIENZA
UNIVERSITÀ DI ROMA

Prof. Calogero Bellanca

Museology and Museography

PROGRAMME OF LECTURES		CONTACT HOURS		
		LECTURES	EXERCISE	DESIGN
1	Presentation: preparatory reading and history of adaptation and museography, from XIX century to 1955.	3		
2	History of adaptation and museography after second world war to Charter of Venice 1964.	3	2	
3	Adaptation and museography from 1985 to 1987: an interesting period for museography in Italy.	3		
4	Adaptation and museography in Italy from 1987 to 1997.	3	1	
5	Adaptation and museography in Europe, until the first years of the new century.	3	1	
6	Adaptation and museography in Europe, the last years of XX century and the first years of the new century.	4	2	2
7	Spain, Madrid. Caixa Forum and Museo Prado.	4		
8	Spain, Madrid. Thyssen-Bornemisza Museum, Reina Sofia Museum, Archeological Museum.	3		
9	Berlin. Neues Museum.	4	2	2
10	Berlin. Museum out of the museum.	3		2
11	Amsterdam. Rijksmuseum.	3		
12	Amsterdam. "House-museums". Historic Museum of the city.	4	2	2
13	Ravenna. Biblioteca Classense.	3	2	
14	Siena. Santa Maria della Scala.	3	1	
15	Roma, Terme di Diocleziano Palazzo Altemps.	4	2	2
		50	15	10



THIRD LESSON:
MUSEOLOGY AND MUSEOGRAPHY

*Adaptation and museography from 1985 to
1987: an interesting period for museography in
Italy.*

*Colosseum,
Rome*



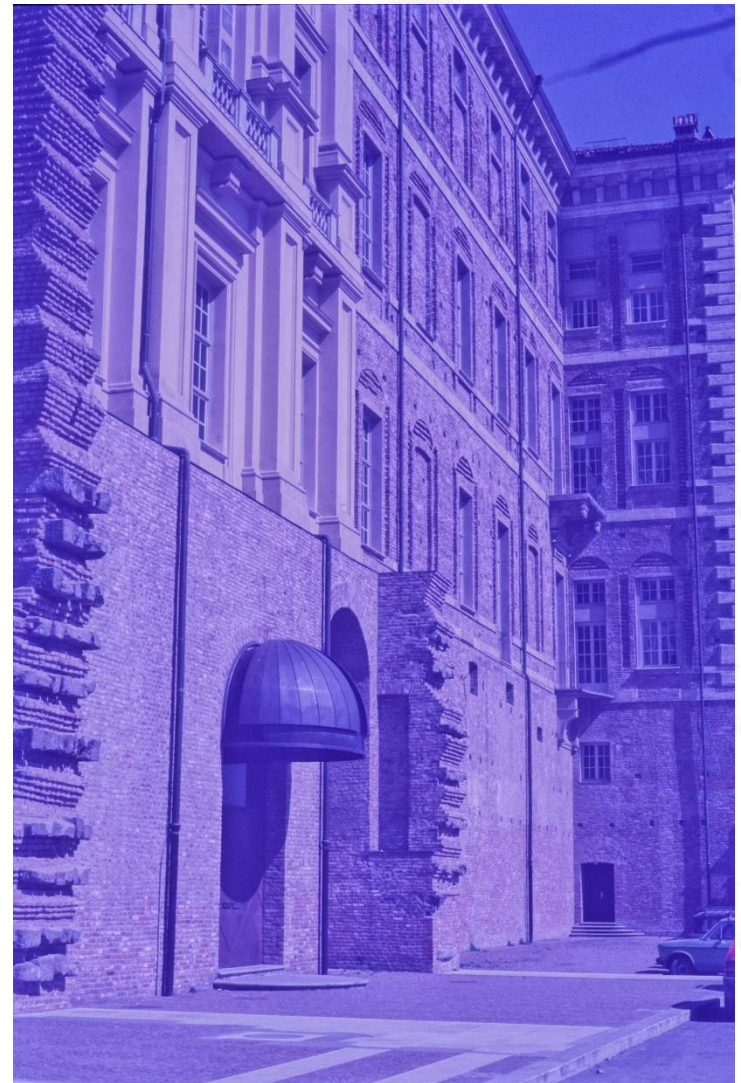
Colosseo, 1985, exhibition (CB 1985)

Castle of Rivoli, Turin



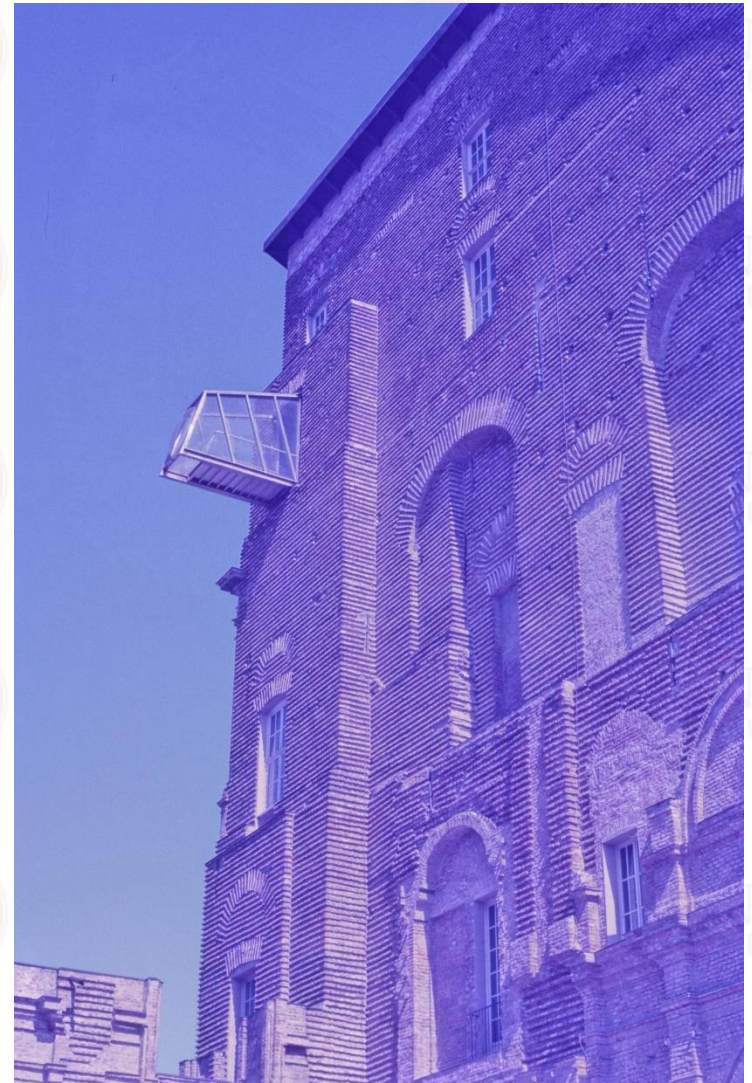
New use for ancient building, project by
Andrea Bruno (CB 1987)

Castle of Rivoli, Turin



Contemporary insertion for the access (CB 1987)

Castle of Rivoli, Turin

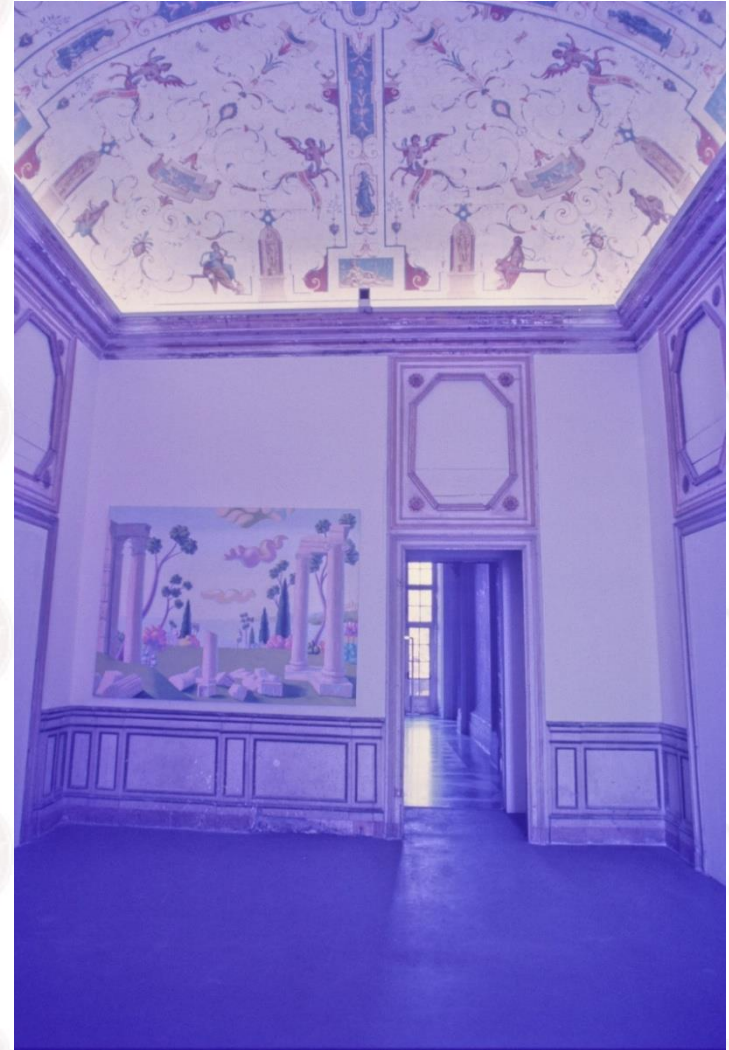


Contemporary insertion with new overlooking
(CB 1987)

Castle of Rivoli, Turin



A new stair by Andrea Bruno (CB 1987).



A modern painting in a classical space (CB 1987).

Castle of Rivoli, Turin

A temporary exhibition, a Modern Art (CB 1987)



Palazzo Grassi, Venice

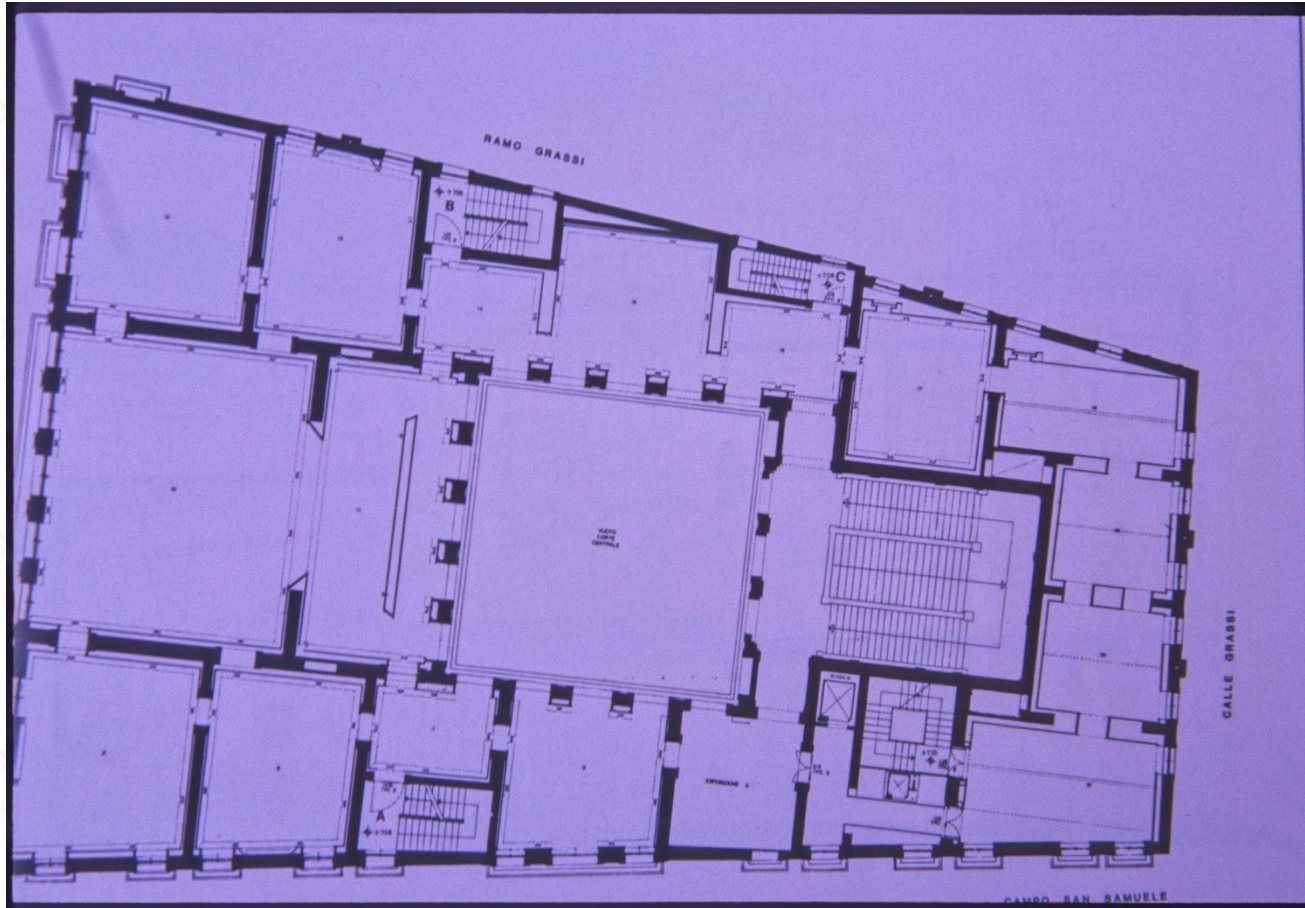


Before cleaning
(F. Gramaglia 1986)



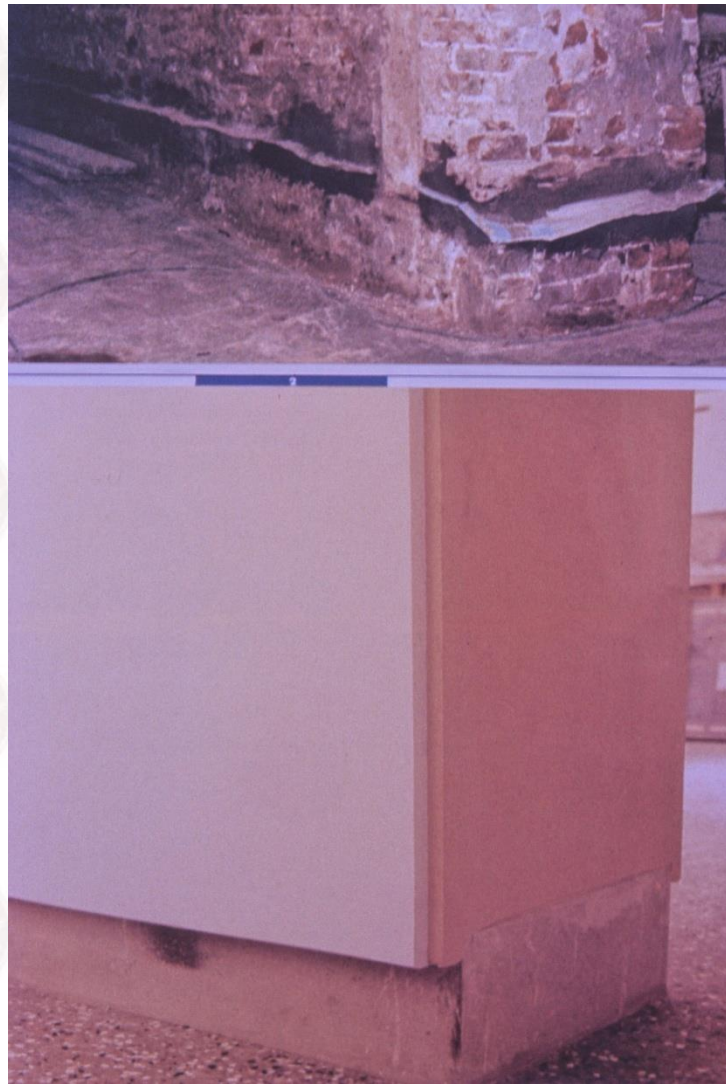
After cleaning
(F. Gramaglia 1986)

Palazzo Grassi, Venice



New configuration of space with the insertion of wall, project by Gae Aulenti
(F. Gramaglia 1986)

*Palazzo
Grassi,
Venice*



The solution of dampness... (F. Gramaglia 1986)

Palazzo Grassi, Venice



The new glass covering (F. Gramaglia 1986)

*Palazzo
Grassi, Venice*



Detail, partition wall for dividing ancient space with inserts for the lights. (CB 1985-1986)

Palazzo Grassi, Venice



The courtyard, the furniture and the exhibition (CB 1986)

Microbibliography

- F. MINISSI, *Conservazione dei beni storico artistici e ambientali, restauro e musealizzazione*, Roma 1978.
- F. MINISSI, *Il museo negli anni Ottanta*, Roma 1983.
- F. MINISSI, *Conservazione, vitalizzazione, musealizzazione*, Roma 1988.
- R. SCHAER, *Il museo tempio della memoria*, Milano 1996.
- F. GRAMAGLIA, *Opere di restauro conservativo, consolidamento e adeguamento di Palazzo Grassi a Venezia*, in Aniasper, *Il progetto di restauro, atti del convegno e mostra. Roma 20-22 novembre 1986*, pp. 91-107; 121-128.



**Project "SURE - Sustainable Urban Rehabilitation in Europe"
implemented in frames of Erasmus+ Programme
Key Action 2: Strategic Partnership Projects
Agreement n° 2016-1-PL01-KA203-026232**

This publication has been funded within support from the European Commission.

Free copy.

This publication reflects the views only of the author, and the Commission cannot be held responsible for any use which may be made of the information contained therein.

**Co-funded by the
Erasmus+ Programme
of the European Union**

