



Architectural Conservation Studio



Erasmus+

ARCHITECTURAL CONSERVATION STUDIO

13. LITURGICAL ADAPTATION II



SAPIENZA
UNIVERSITÀ DI ROMA

Prof. Calogero Bellanca

Course of architectural and conservation studio

ARCHITECTURAL CONSERVATION STUDIO

	PROGRAMME OF LECTURES	CONTACT HOURS		
		LECTURES	EXERCISE	DESIGN
1	A brief guide to graphic representations	3	4	2
2	Methodical study of monuments	5	3	
3	Methodical study of monuments. Church of "La Martorana". Tower bell and new façade.	3	2	
4	Methodical study of monuments. The medieval tower bell. Comparisons.	3	2	2
5	Sermoneta: the church of Santa Maria Assunta	4	2	
6	Antonio da Sangallo il Giovane	3	2	
7	Antonio da Sangallo il Giovane and some of the Via Appia (Rome)	3	1	
8	Italian architecture from 16 th to 18 th century; diffusion in Central Europe. ZAMOSC. Study and proposals for conservation.	3	1	
9	"Roma Barocca" (<i>Baroque Rome</i>)	4	1	
10	Italian architecture from 16 th to 18 th century; diffusion in Central Europe. LANDSHUT AND OTHER EXAMPLES. Study and proposals for conservation.	3	2	2
11	Palazzo Sternberg (Vienna)	2	1	
12	Liturgical adaptation.	3	1	
13	Liturgical adaptation II	3	2	
14	Graphic representations. Examples I	4	3	2
15	Graphic representations. Examples II	4	3	2
		TOT 50	TOT 30	TOT 10



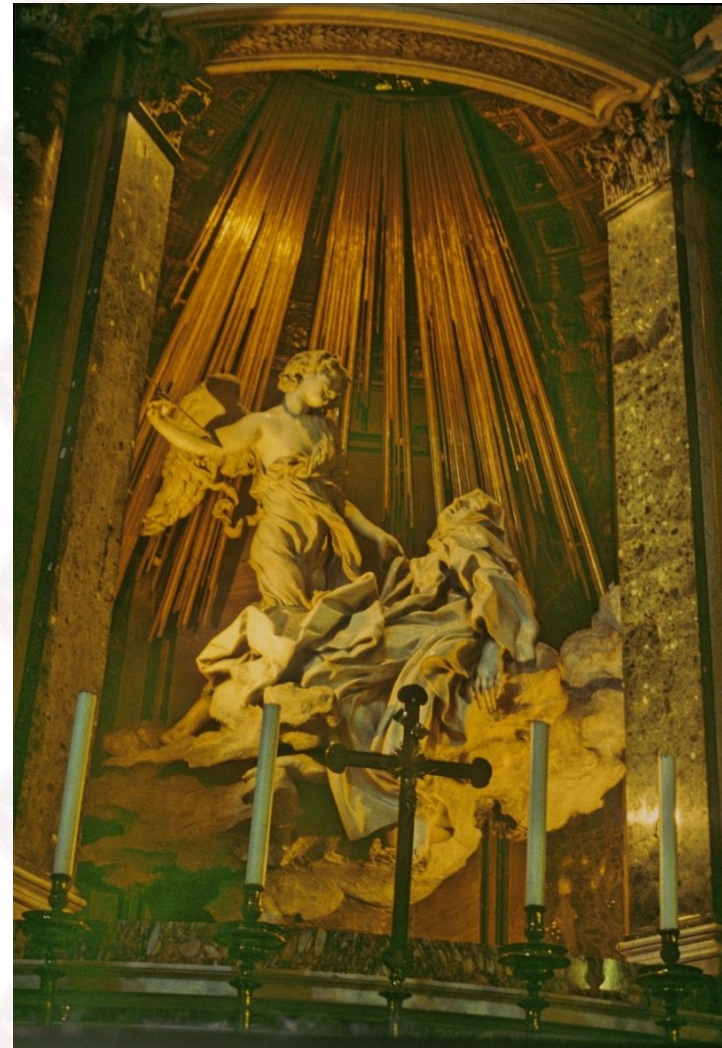
*THIRTEENTH LESSON:
ARCHITECTURAL CONSERVATION STUDIO
Liturgical adaptation II*

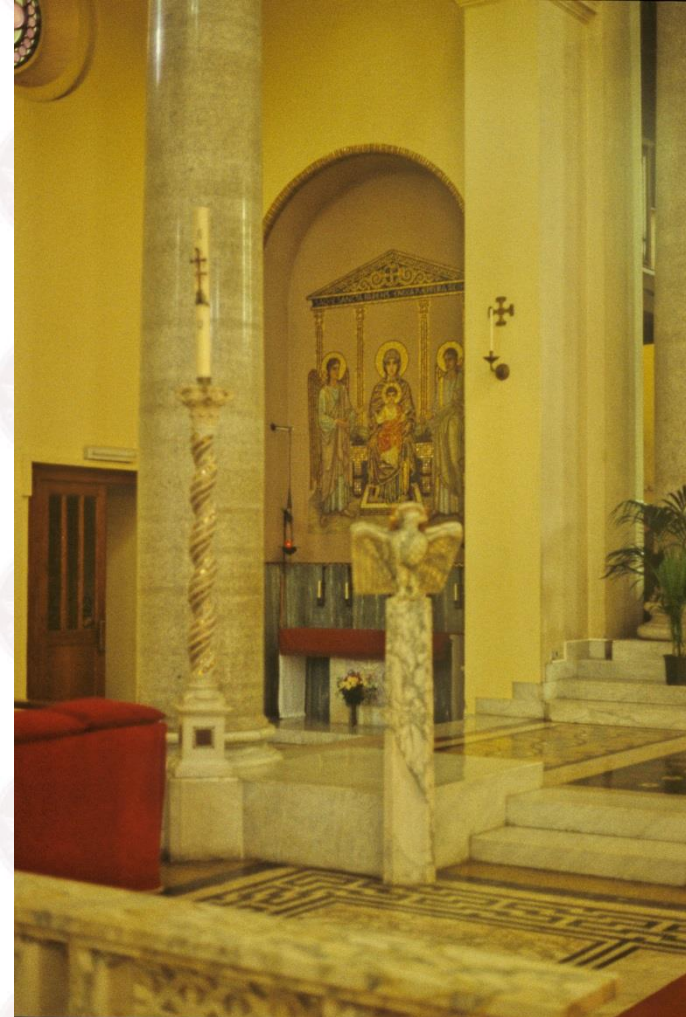


Santa Prassede. Photo by C.B. 1993



Santa Maria della Vittoria. Photo by C.B. 1993





New liturgical adaptation after Vatican Council II. Photo by C.B. 1989



New liturgical adaptation after Vatican Council II. Photo by C.B. 1999



Iconography of the last years of XX century. Archivio della Soprintendenza di Roma



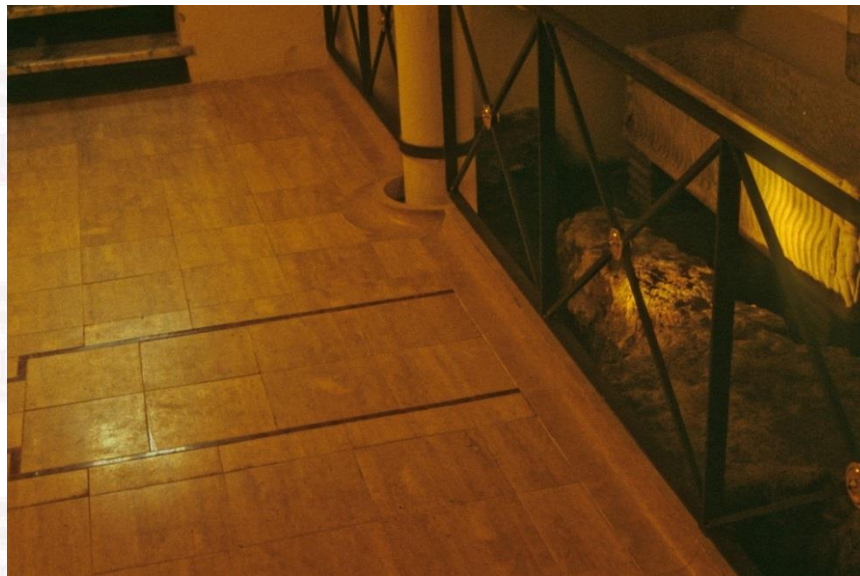
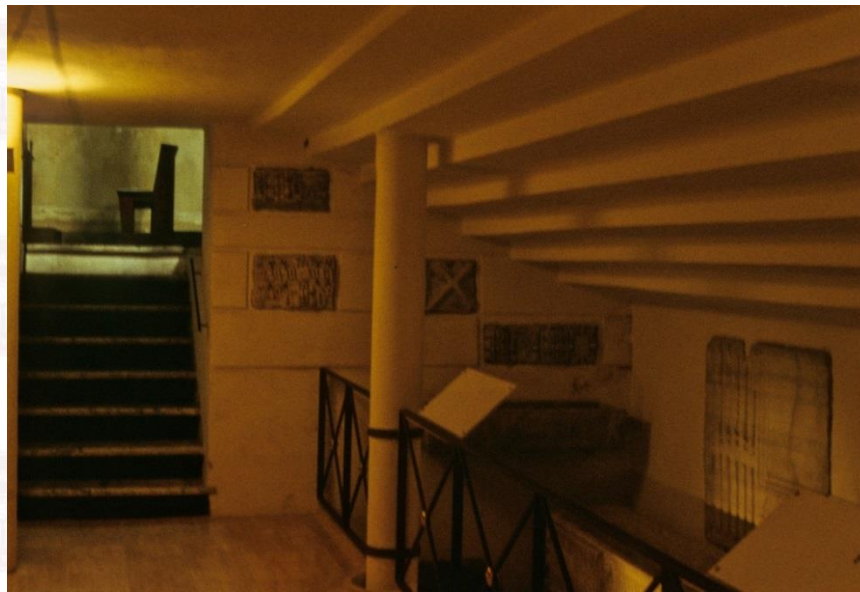
Santa Maria in Domnica before adaptation. Photo by C.B. 1994



Santa Maria in Domnica before adaptation. Photo by C.B. 1994



Santa Maria in Domnica after liturgical adaptation, with the baptismal font. Photo by C.B. 1997



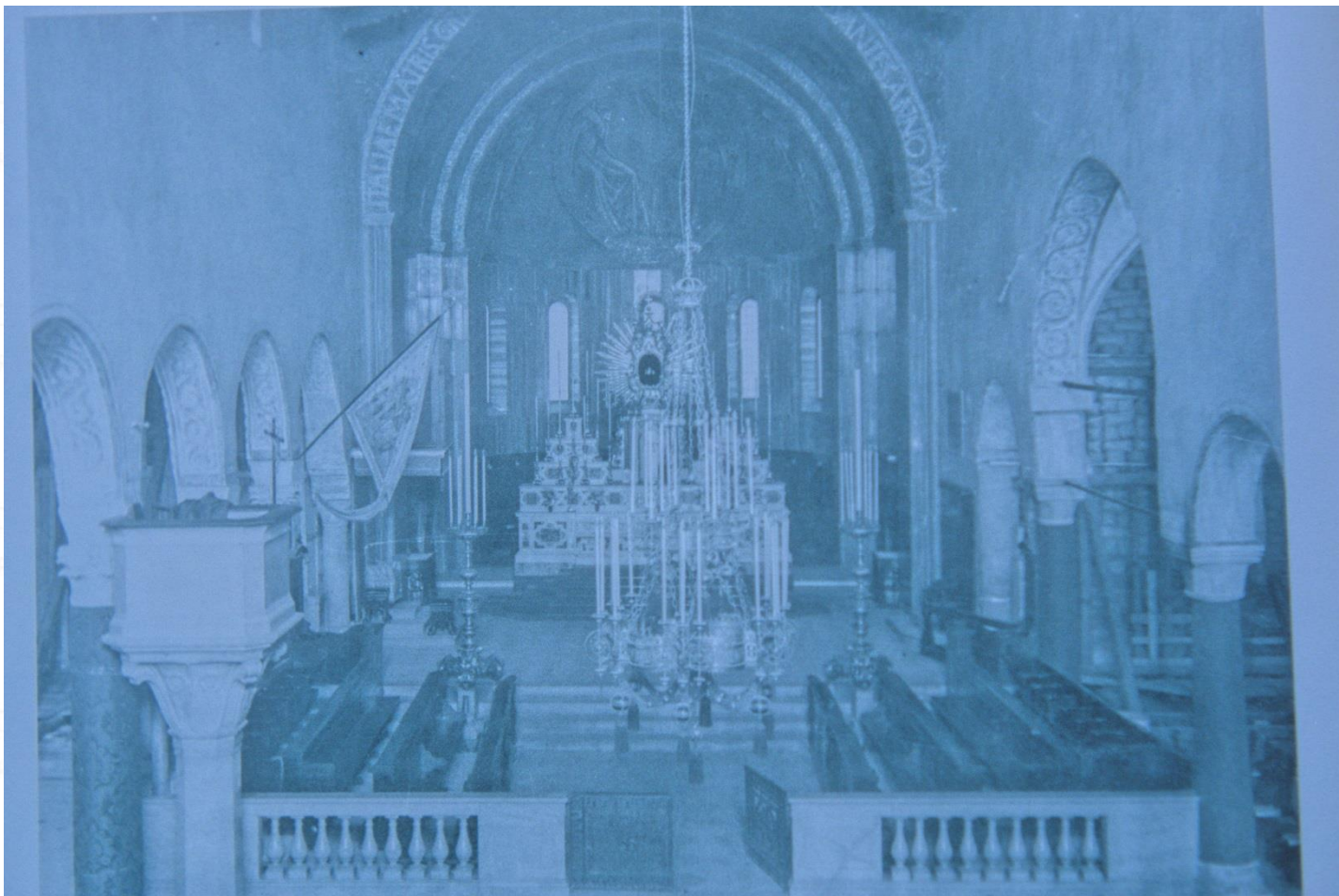
Santa Maria in Domnica; cripta, now a museal conversion and chapel. Photo by C.B. 1997



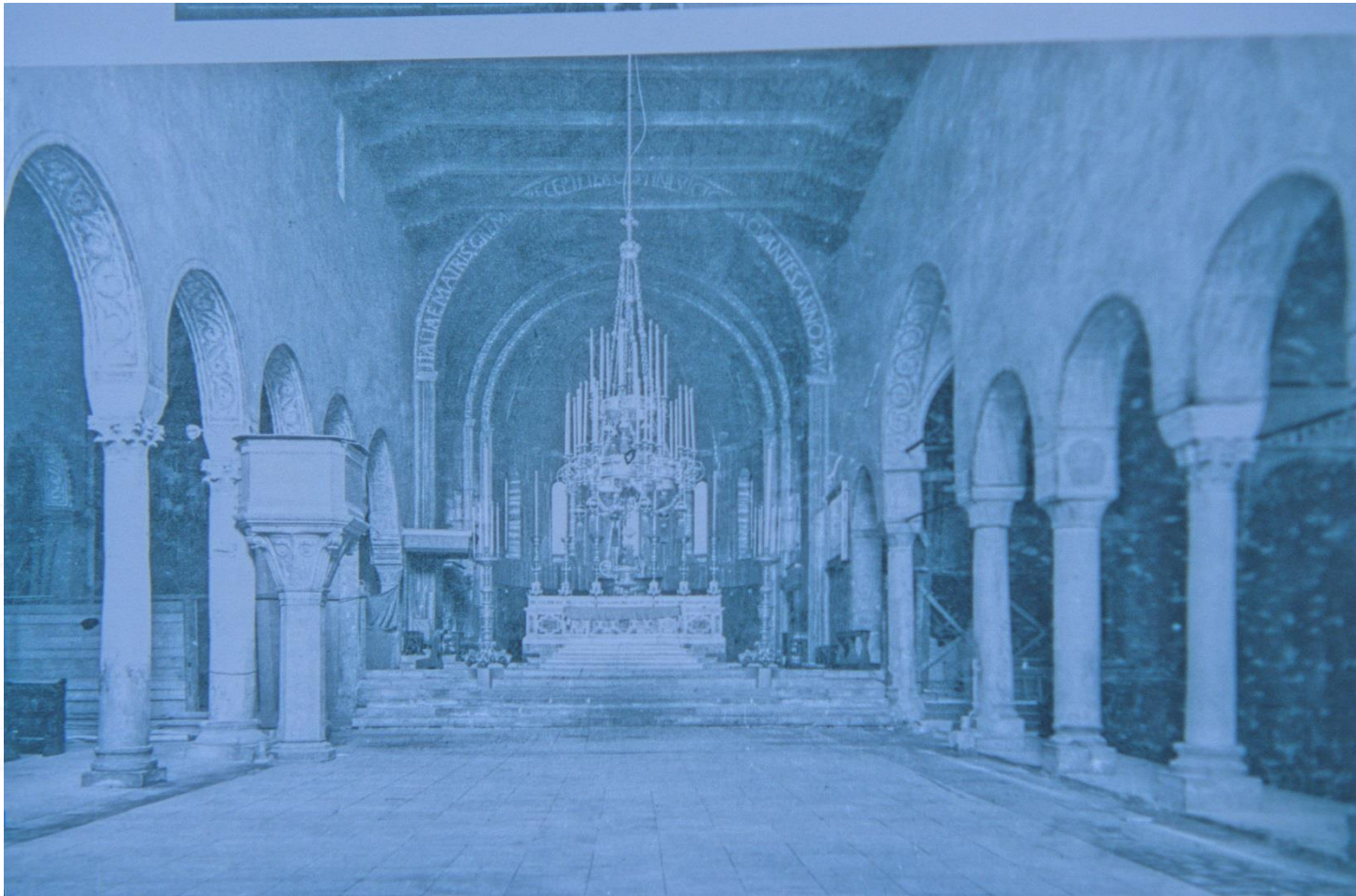
Santi Ambrogio e Carlo al Corso. Photo by C.B. 1999



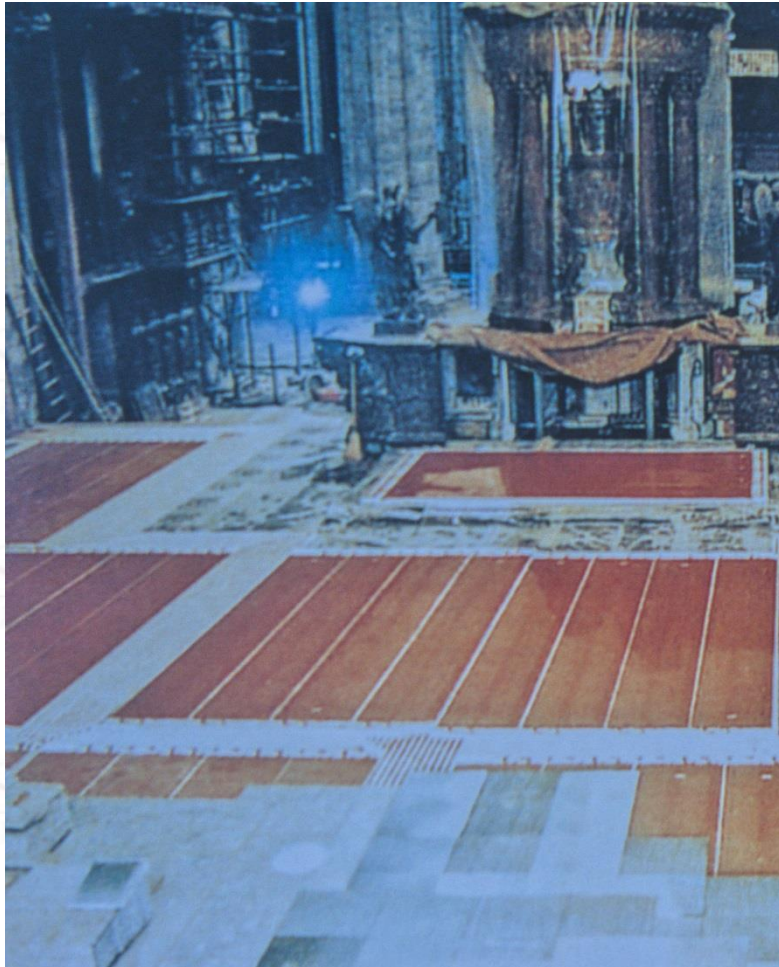
Bressanone before and after liturgical adaptation. (Right: Photo by C.B. 2005)



Trieste, San Giusto. Archivio Soprintendenza



Trieste, San Giusto. Archivio Soprintendenza



Problems and solutions in installations. Photo by C.B.



**Project "SURE - Sustainable Urban Rehabilitation in Europe"
implemented in frames of Erasmus+ Programme
Key Action 2: Strategic Partnership Projects
Agreement n° 2016-1-PL01-KA203-026232**

This publication has been funded within support from the European Commission.

Free copy.

This publication reflects the views only of the author, and the Commission cannot be held responsible for any use which may be made of the information contained therein.

**Co-funded by the
Erasmus+ Programme
of the European Union**

