



## *Landscape Architecture*



Erasmus+

# LANDSCAPE ARCHITECTURE

12.

**Analysis and project: study case (2).  
Study case: Ostia Antica.**



**SAPIENZA**  
UNIVERSITÀ DI ROMA

**Arch. Phd. Barbara Tetti**

## Course of Landscape Architecture

PROGRAMME OF LECTURES		CONTACT HOURS		
		LECTURES	EXERCISE	DESIGN
1	Landscape concept premises: the rise of landscape environmental consideration: XVII and XVIII centuries.	4	2	
2	Landscape concept: the historical background XVIII-early XIX century: nature, architecture, ruins.	4	1	2
3	A new awareness in landscape connected values: Goethe, Lorrain, Ruskin. Grand Tour: translating landscape	4		
4	Wild and built; architecture and city. XIX century experiences: Wien, London, Paris and the Roman case.	4	2	
5	Environment – Territory – Landscape: etymology and current meanings.	5	1	2
6	Interpreting Landscape: perceptions and representation.	4	2	
7	Illustrating landscape: manners and aims of representation. Portrayal, illustration and planning.	4	1	
8	Surveys and project: interpreting former and planning future landscape	4	2	2
9	Protection and safeguarding (1) International agreements: focus on Paris (1972), and Florence (2000) charters.	5	1	2
10	Protection and safeguarding (2): focus on Granada (1985), and Italian regulations.	4	2	
11	Analysis and project (1). Some cases: Poli, Palestrina, Monterano, Ostia Antica.	4	1	2
12	Analysis and project (2). Study case: Ostia Antica.	4	1	
		<b>50</b>	<b>15</b>	<b>10</b>



### IV - LANDSCAPE ARCHITECTURE

#### L 12 Analysis and project (2). Study case: Ostia Antica.

Barbara Tetti

*TWELFTH LESSON:*

*LANDSCAPE ARCHITECTURE*

*Analysis and project: some cases (2). Study case: Ostia Antica.*

*Poli*

*Palestrina*

*Monterano*

*Study case - Ostia Antica*

# *Monuments, ruins, remains and landscape: POLI*



<https://www.gettyimages.it/detail/illustrazione/view-of-palazzo-maggiore-from-entrance-to-villa-catena-grafica-stock/697539337>





<https://www.fondoambiente.it/luoghi/villa-catena?ldc>

**IV - LANDSCAPE ARCHITECTURE**  
**L 12 Analysis and project (2). Study case: Ostia Antica.**

**Barbara Tetti**



<https://www.fondoambiente.it/luoghi/villa-catena?ldc>

**IV - LANDSCAPE ARCHITECTURE**  
**L 12 Analysis and project (2). Study case: Ostia Antica.**

**Barbara Tetti**



# *Monuments, ruins, remains and landscape: MONTERANO*



Monterano, Rome – Palazzo Altieri

Monterano (Lazio, Italy) [www.fondoambiente.it](http://www.fondoambiente.it)

**IV - LANDSCAPE ARCHITECTURE**  
**L 12 Analysis and project (2). Study case: Ostia Antica.**

**Barbara Tetti**





Monterano, Rome – ASR Catasto Gregoriano

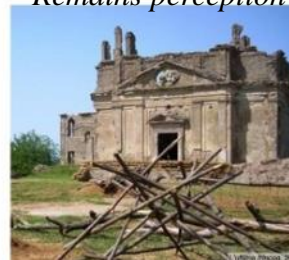


San Bonaventura, progetto (sec. XVII)



Students works - Course of Architettura del Paesaggio, Sapienza Università di Roma

*Remains perception*



*Movies 1982-2008*





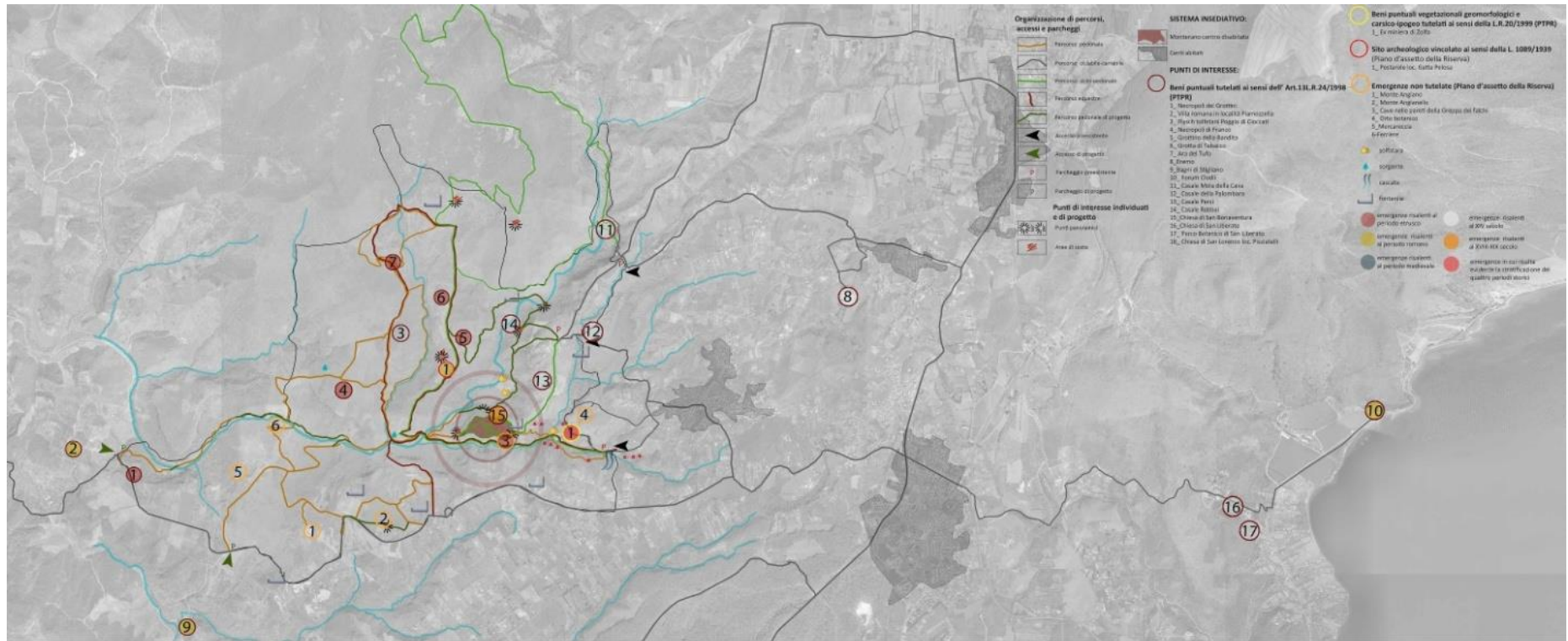
Monterano- Palazzo Altieri and S. Rocco church

Monterano- S. Bonaventura church - interior

Monterano (Lazio, Italy),  
[www.wikipedia.org](http://www.wikipedia.org); [www.terzobinario.it](http://www.terzobinario.it);  
[www.civitavecchia.portmobility.it](http://www.civitavecchia.portmobility.it).



# TERRITORY AND PATTERN



The territory: paths and urban centres.



Monterano, Rome – seasons: light, colours, vegetation.

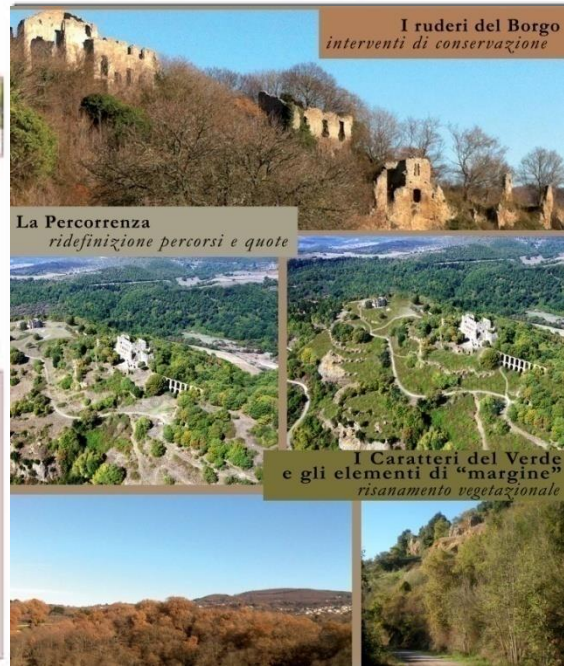
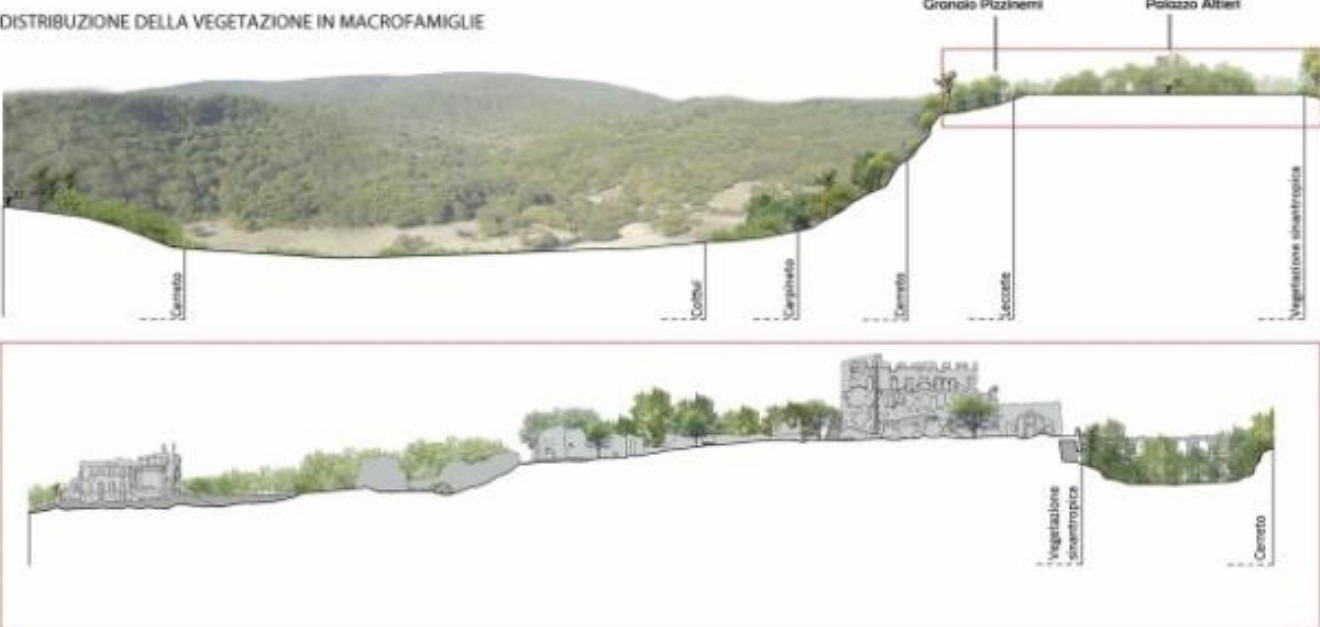


Students works - Course of Architettura del Paesaggio, Sapienza Università di Roma



# MORPHOLOGY – LANDSCAPE - RUINS

Vegetation: plants, trees – distribution and types.



Students works -Course of Architettura del Paesaggio, Sapienza Università di Roma



# HISTORICAL REPRESENTATION

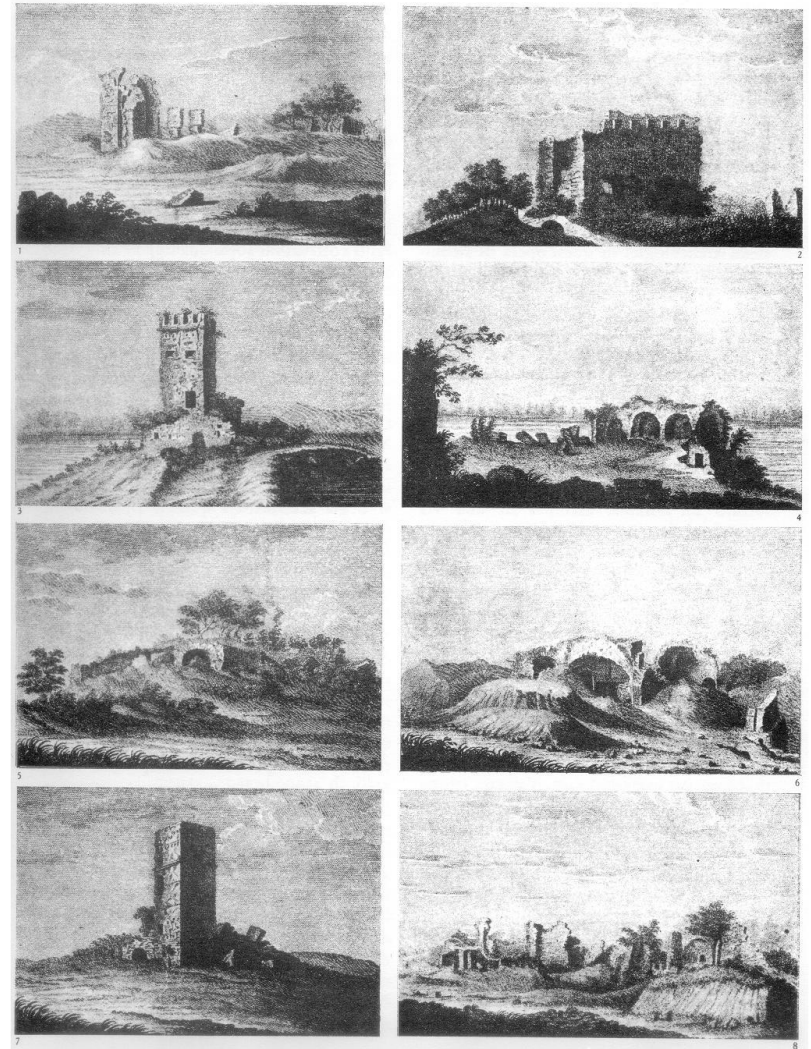


FIG. 11 - VIGNETTE DELLA PIANTA DI GIUSEPPE VERANI, 1804; 1) TERME DI PORTA MARINA; 2) CAPITOLIUM; 3) TOR BOACCIANA; 4) RUDERI SUL TEVERE; 5) RUDERI PRESSO TOR BOACCIANA; 6) TERME DEI SETTE SAPIENTI; 7) LA TORRETTA; 8) TERME DEL FORO

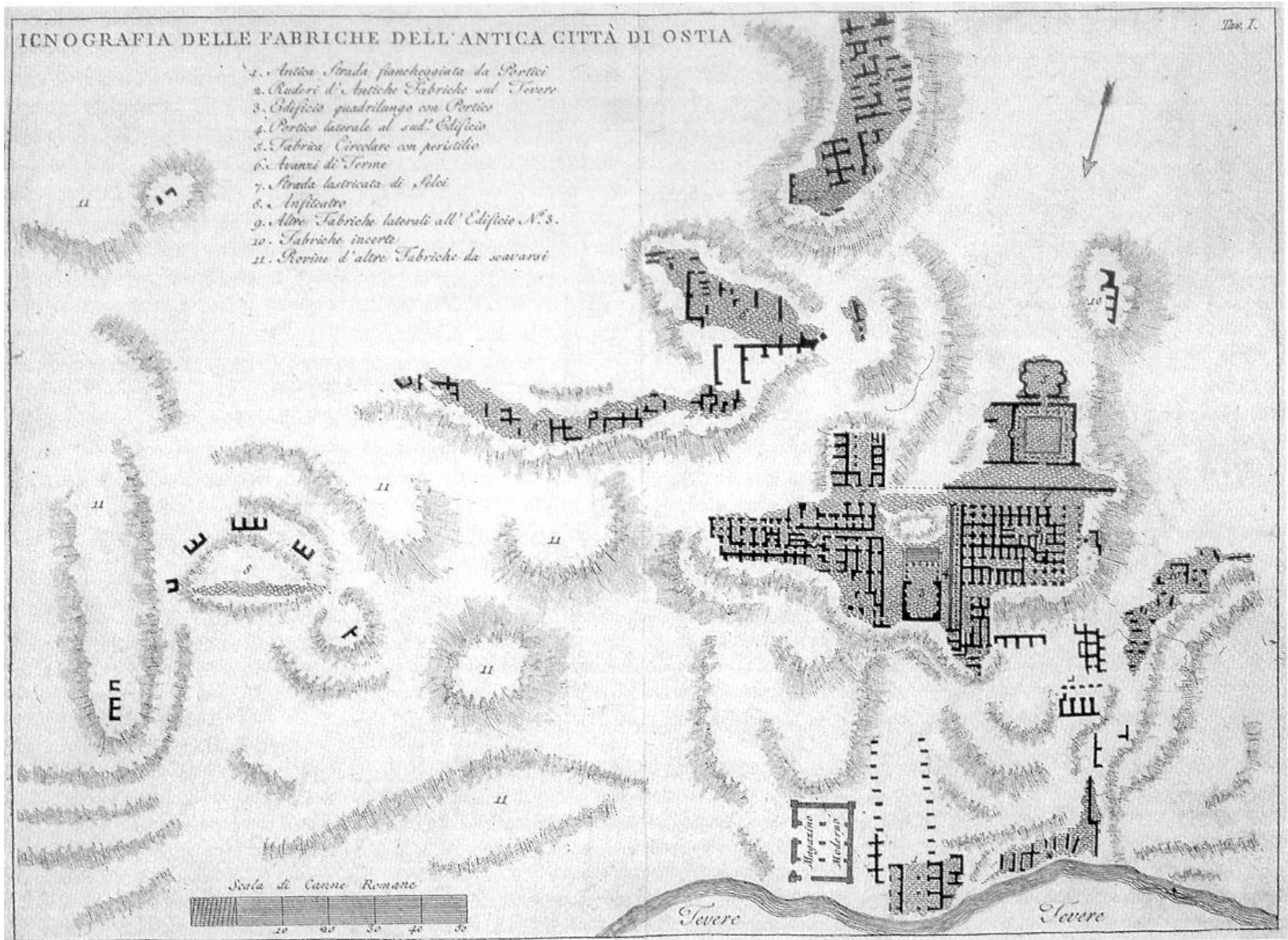
The visit of pope Pius VII on October 4, 1802. To the left is Carlo Fea; Visible ruins in 1804, Giuseppe Verani. SO I, fig. 11; [www.ostiaantica.org](http://www.ostiaantica.org)

IV - LANDSCAPE ARCHITECTURE

L 12 Analysis and project (2). Study case: Ostia Antica.

Barbara Tetti





One of the plans of Pietro Holl (1805). South is up; [www.ostiaantica.org](http://www.ostiaantica.org)

IV - LANDSCAPE ARCHITECTURE  
 L 12 Analysis and project (2). Study case: Ostia Antica.

Barbara Tetti



# ARCHAEOLOGICAL EXCAVATION



The excavations of the Terme dei Sette Sapianti. Photograph SAOA B2525, SAOA B2571;  
[www.ostiaantica.org](http://www.ostiaantica.org)



IV - LANDSCAPE ARCHITECTURE  
L 12 Analysis and project (2). Study case: Ostia Antica.

Barbara Tetti





The southern stretch of the Cardo, after restoration, Photograph SAOA B3044 and, during the excavation (1938-1942)



[www.ostiaantica.org](http://www.ostiaantica.org)

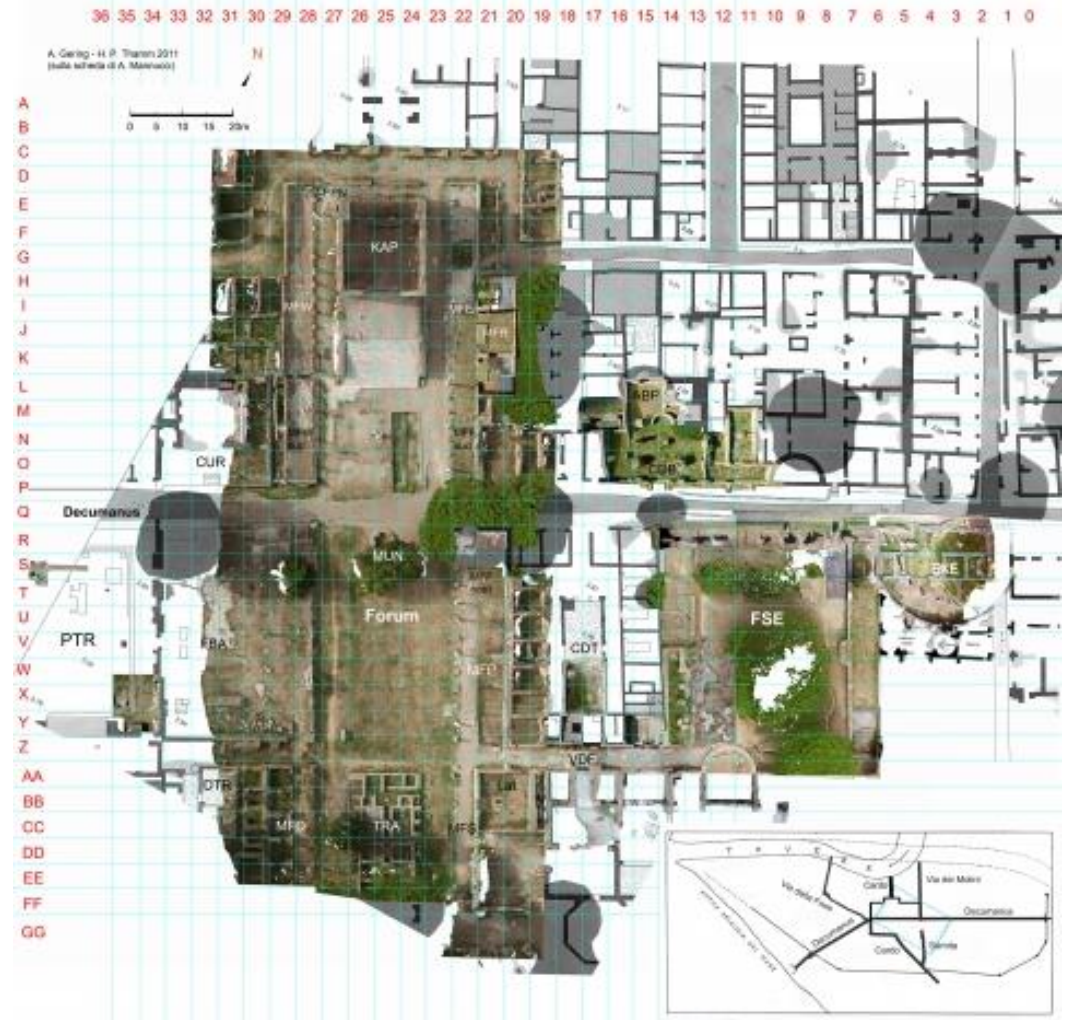
**IV - LANDSCAPE ARCHITECTURE**  
**L 12 Analysis and project (2). Study case: Ostia Antica.**

**Barbara Tetti**



# TECHNICAL REPRESENTATION

Melanges del Ecole Francaise de Rome, Attività della missione della Humboldt-Universität di Berlino tra il 2009 e il 2013; journals.openedition.org; Foro della Statua Eroica







Ostia Antica, Rome  
internal and aerial view.





**Project "SURE - Sustainable Urban Rehabilitation in Europe"  
implemented in frames of Erasmus+ Programme  
Key Action 2: Strategic Partnership Projects  
Agreement n° 2016-1-PL01-KA203-026232**

**This publication has been funded within support from the European Commission.**

**Free copy.**

**This publication reflects the views only of the author, and the Commission cannot be held responsible for any use which may be made of the information contained therein.**

**Co-funded by the  
Erasmus+ Programme  
of the European Union**

