



Museology and Museography



Erasmus+

MUSEOLOGY AND MUSEOGRAPHY

11.

Amsterdam. Rijksmuseum



SAPIENZA
UNIVERSITÀ DI ROMA

Prof. Calogero Bellanca

Museology and Museography

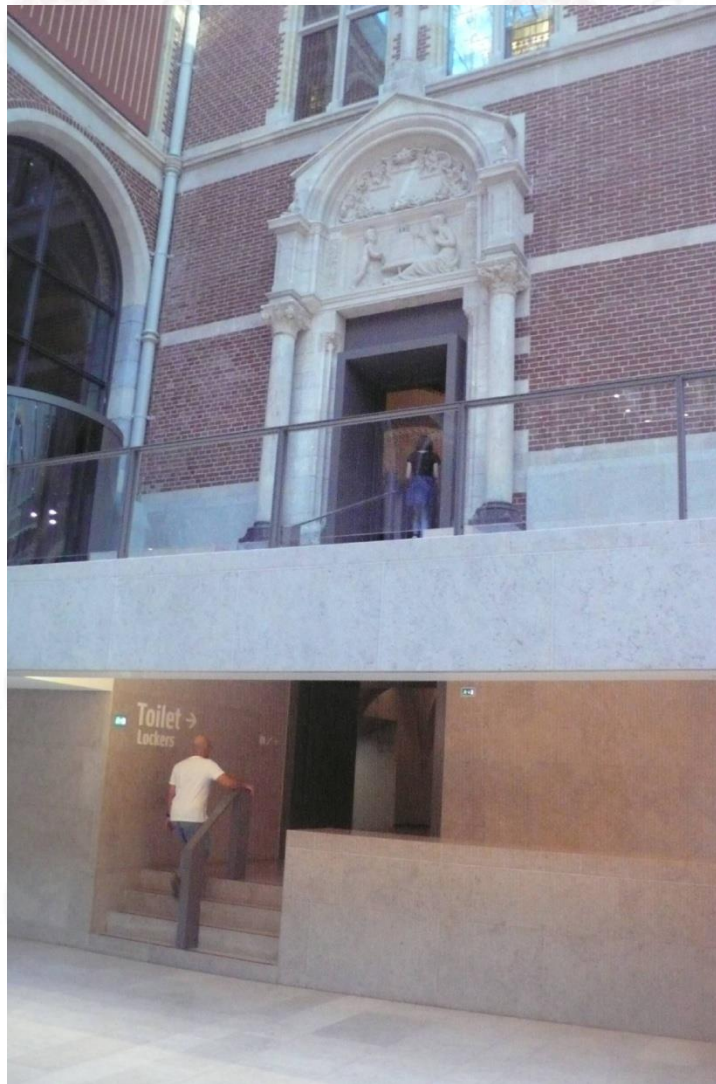
PROGRAMME OF LECTURES		CONTACT HOURS		
		LECTURES	EXERCISE	DESIGN
1	Presentation: preparatory reading and history of adaptation and museography, from XIX century to 1955.	3		
2	History of adaptation and museography after second world war to Charter of Venice 1964.	3	2	
3	Adaptation and museography from 1985 to 1987: an interesting period for museography in Italy.	3		
4	Adaptation and museography in Italy from 1987 to 1997.	3	1	
5	Adaptation and museography in Europe, until the first years of the new century.	3	1	
6	Adaptation and museography in Europe, the last years of XX century and the first years of the new century.	4	2	2
7	Spain, Madrid. Caixa Forum and Museo Prado.	4		
8	Spain, Madrid. Thyssen-Bornemisza Museum, Reina Sofia Museum, Archeological Museum.	3		
9	Berlin. Neues Museum.	4	2	2
10	Berlin. Museum out of the museum.	3		2
11	Amsterdam. Rijksmuseum.	3		
12	Amsterdam. "House-museums". Historic Museum of the city.	4	2	2
13	Ravenna. Biblioteca Classense.	3	2	
14	Siena. Santa Maria della Scala.	3	1	
15	Roma, Terme di Diocleziano Palazzo Altemps.	4	2	2
		50	15	10



ELEVENTH LESSON:
MUSEOLOGY AND MUSEOGRAPHY
AMSTERDAM, Rijksmuseum



New central hall Project by Cruz y Ortiz (CB 2016)

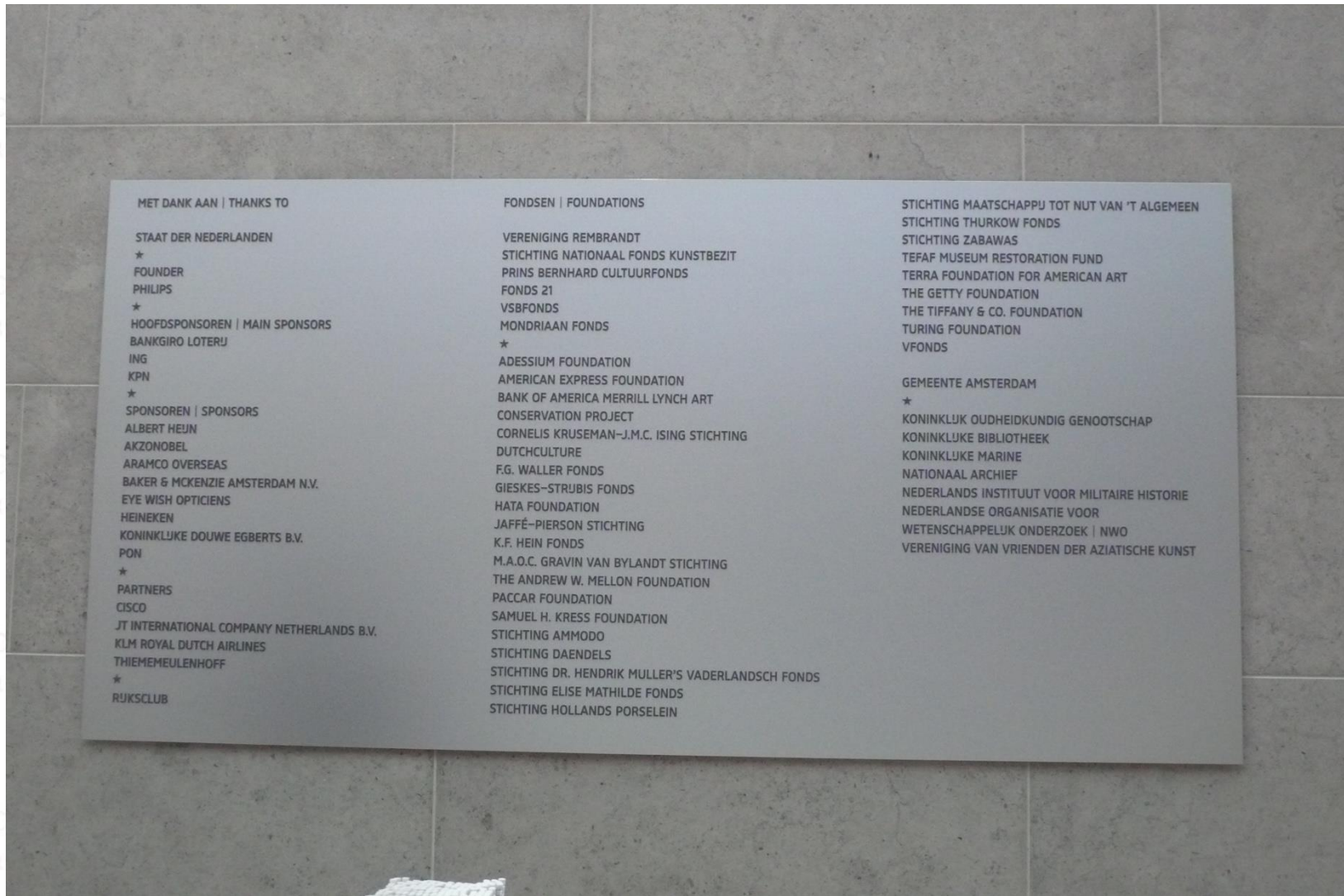


New insertion in central hall, access to service spaces for visitors (CB 2016)

Central hall, with different itinerary, a topic solution of many contemporary museums (CB 2016).



Informative panel, with the name of the funders (CB 2016).



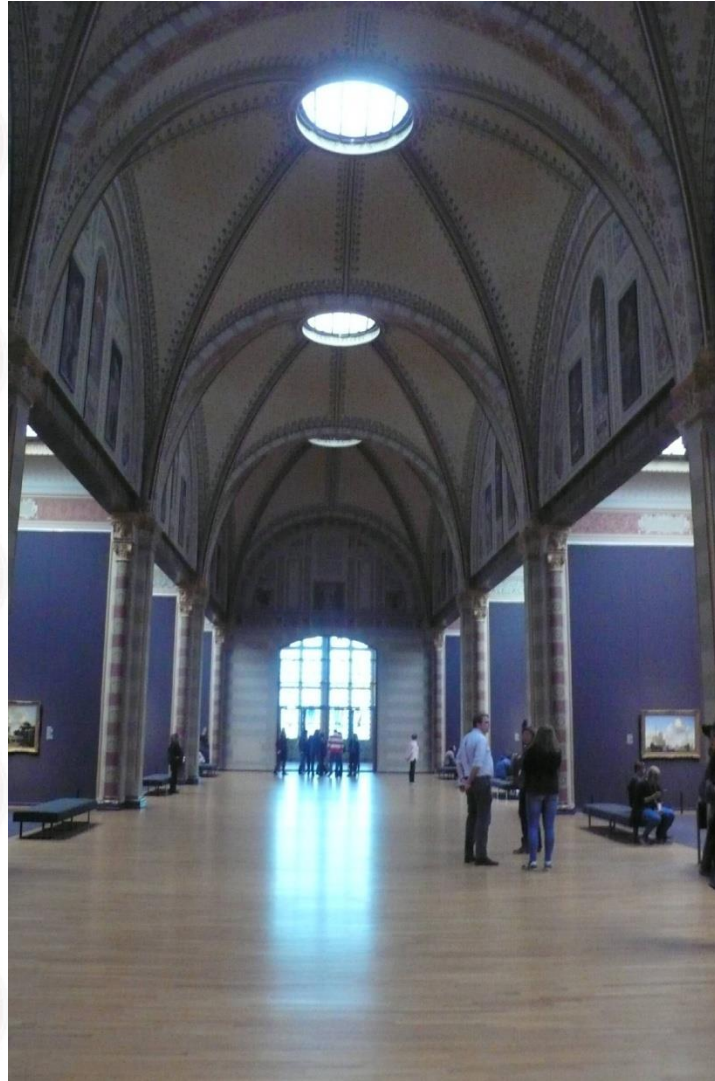


New adaptation... (CB 2016).

The Renaissance sculpture (CB 2016).



Conservation of ancient space of the museum
(CB 2016).



Rembrandt, «The Night Watch» and visitors (CB 2016).



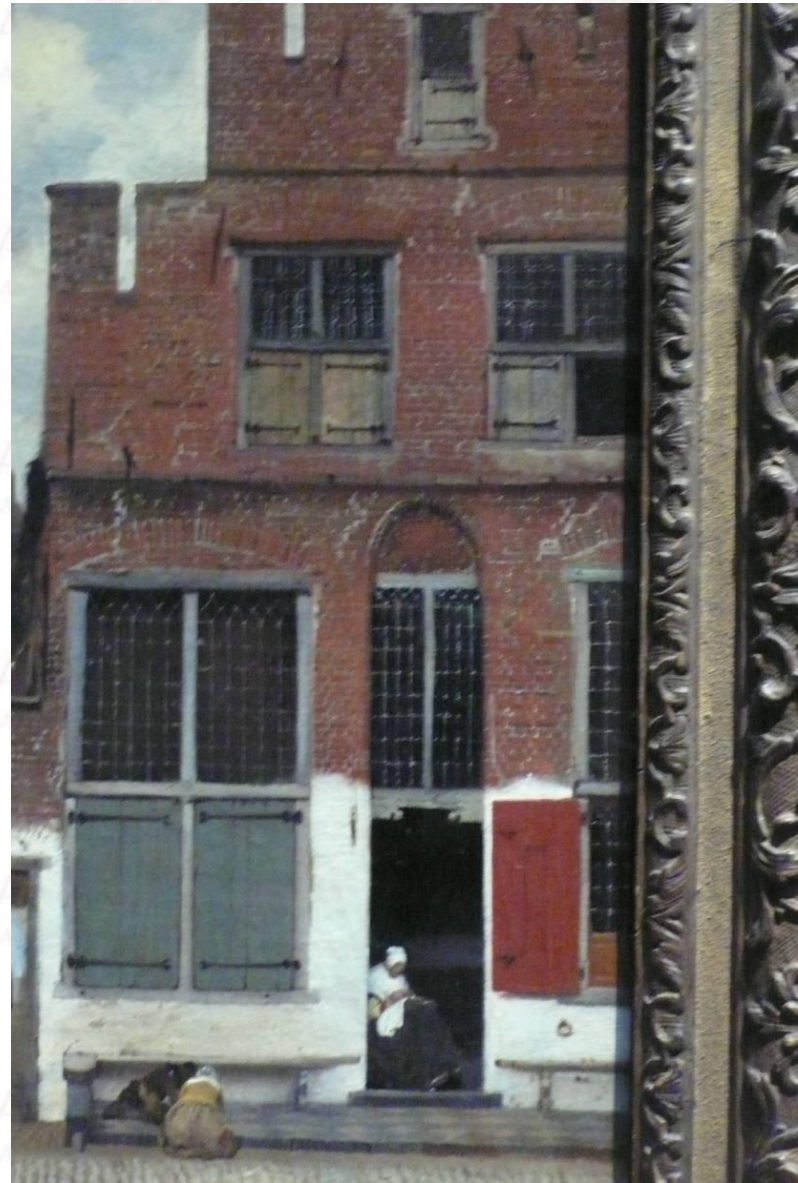
Rembrandt, «The Syndics» and visitors (CB 2016).



Rembrandt, «The Milkmaid» and visitors (CB 2016)



Architectural detail of a Vermeer painting, with the representation of the decay.
(CB 2016).



Example of the conservation of an eclectic space.

Is evident the question of the contemporary
lightening.
(CB 2016)



The fruition of the space is possible also respecting the history and avoiding excessive modernization (CB 2016).





**Project "SURE - Sustainable Urban Rehabilitation in Europe"
implemented in frames of Erasmus+ Programme
Key Action 2: Strategic Partnership Projects
Agreement n° 2016-1-PL01-KA203-026232**

This publication has been funded within support from the European Commission.

Free copy.

This publication reflects the views only of the author, and the Commission cannot be held responsible for any use which may be made of the information contained therein.

**Co-funded by the
Erasmus+ Programme
of the European Union**

