



# *INVENTORY AND SURVEY OF HISTORICAL BUILDINGS*

## *INVENTORY – 3D SCANNING*



Erasmus+

# SURVEY OF HISTORICAL BUILDINGS

*KNOWLAGE  
REVIEW*

INVENTORY

*IN SITU* TESTS

LABORATORY TESTS

# SURVEY OF HISTORICAL BUILDINGS

*KNOWLAGE  
REVIEW*

LABORATORY TESTS

INVENTORY

*IN SITU* TESTS

# INVENTORY METHODS

```
graph TD; A[INVENTORY METHODS] --> B[TRADITIONAL METHODS]; A --> C[MODERN METHODS];
```

## TRADITIONAL METHODS

- measure tape, folding rule
- laser measure
- photogrammetry
- geodetic methods

## MODERN METHODS

- 3D scanning
- spherical photos
- dron photos
- thermal camera

# INVENTORY METHODS

```
graph TD; A[INVENTORY METHODS] --> B[TRADITIONAL METHODS]; A --> C[MODERN METHODS]; B --- B_list["• measure tape, folding rule<br/>• laser measure<br/>• photogrammetry<br/>• geodetic methods"]; C --- C_list["• 3D scanning<br/>• spherical photos<br/>• drone photos<br/>• thermal camera"];
```

## TRADITIONAL METHODS

- measure tape, folding rule
- laser measure
- photogrammetry
- geodetic methods

## MODERN METHODS

- 3D scanning
- spherical photos
- drone photos
- thermal camera



## Leica Geosystems 3D laser scanners deliver:

- Highest quality 3D data and HDR imaging
- Extremely high speed scan rate of 1 mio points per second
- Ranges of up to 270 m
- Low range noise
- Survey-grade dual-axis compensation
- Highly detailed 3D colour point clouds mapped in realistic clarity

# 3D SCANNING

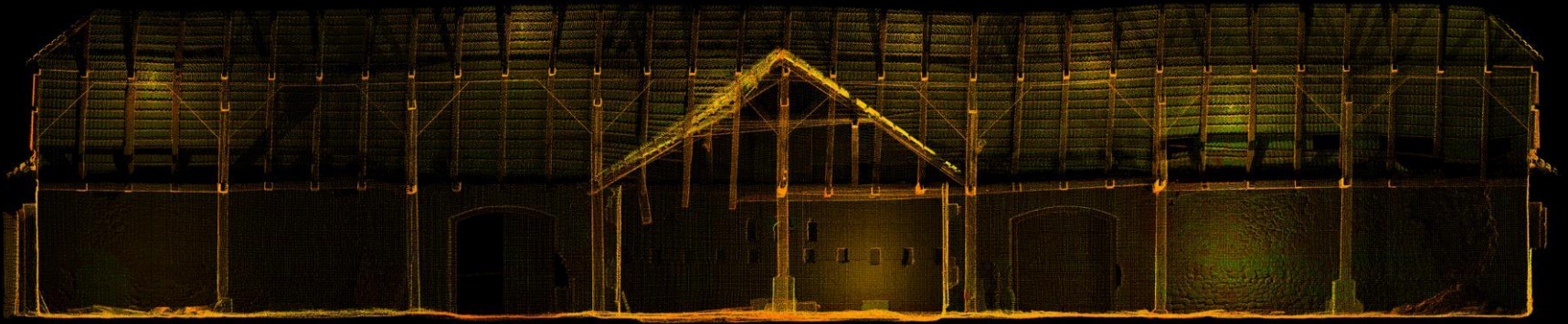


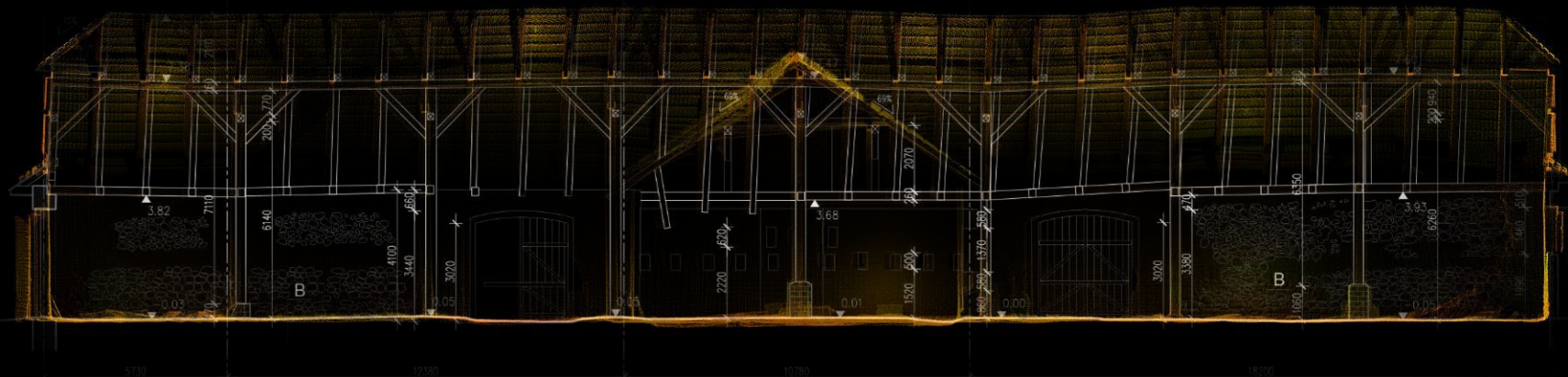
source: leica-geosystems.com

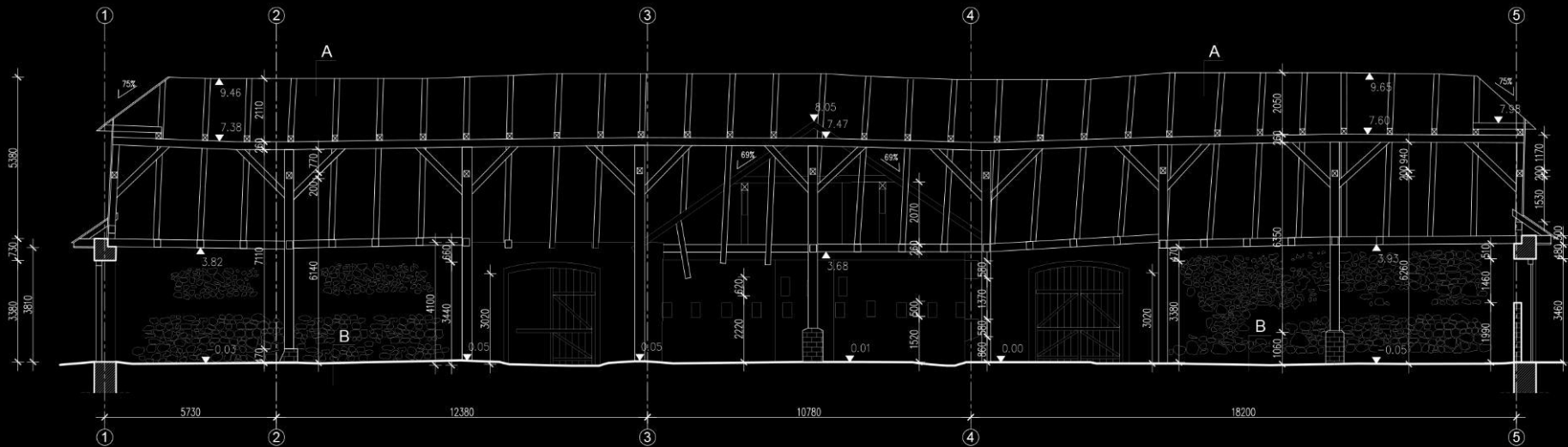


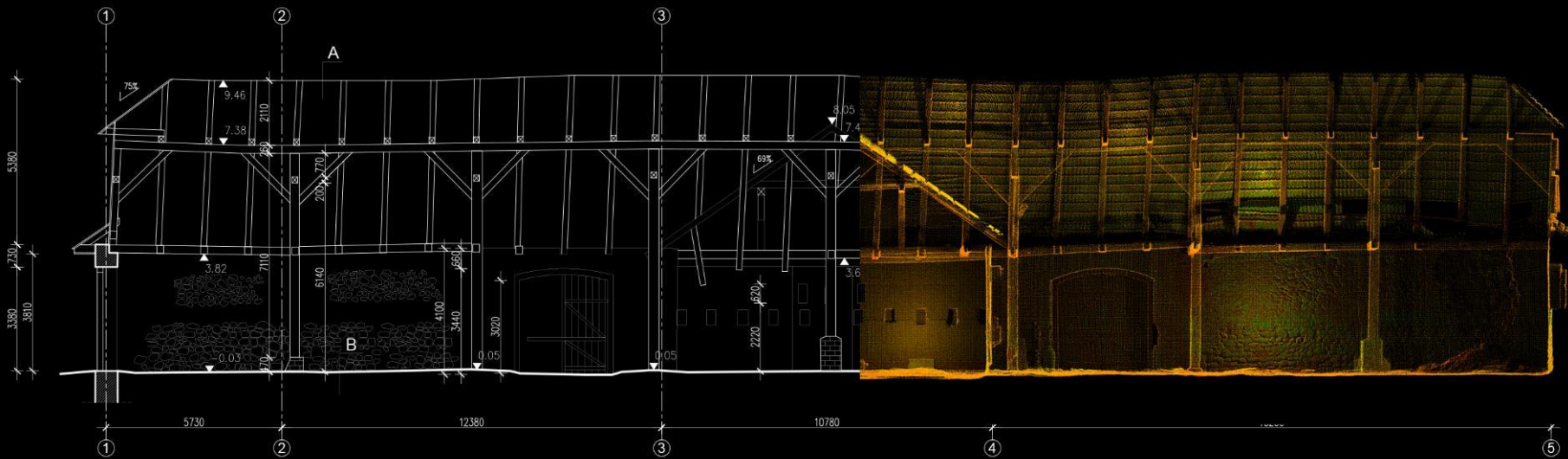






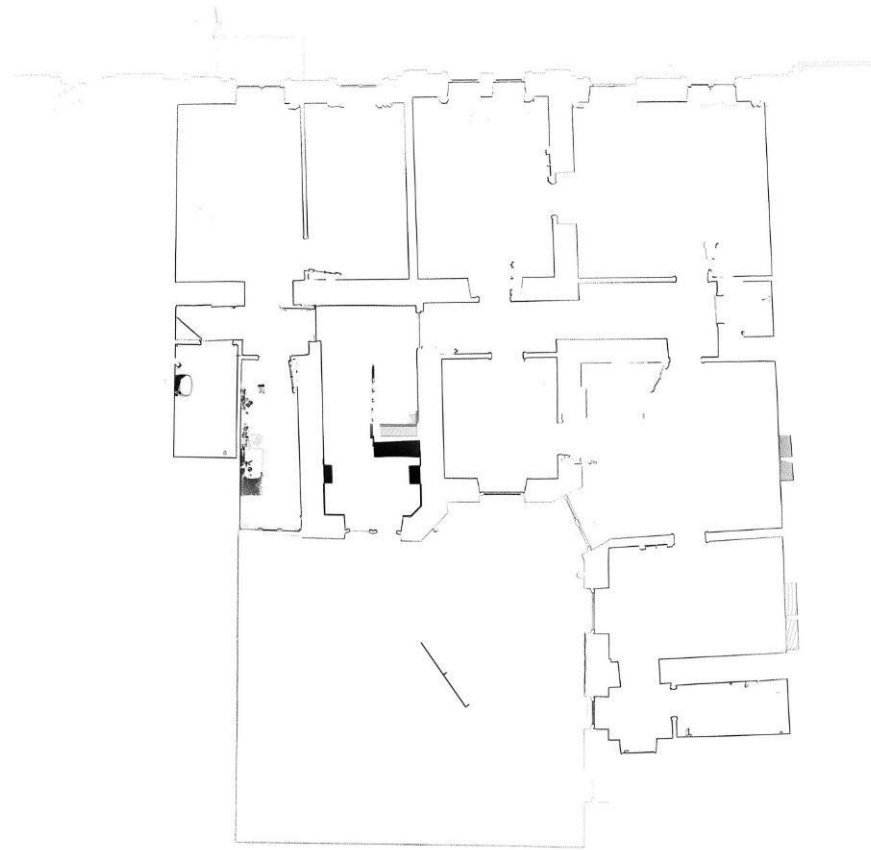


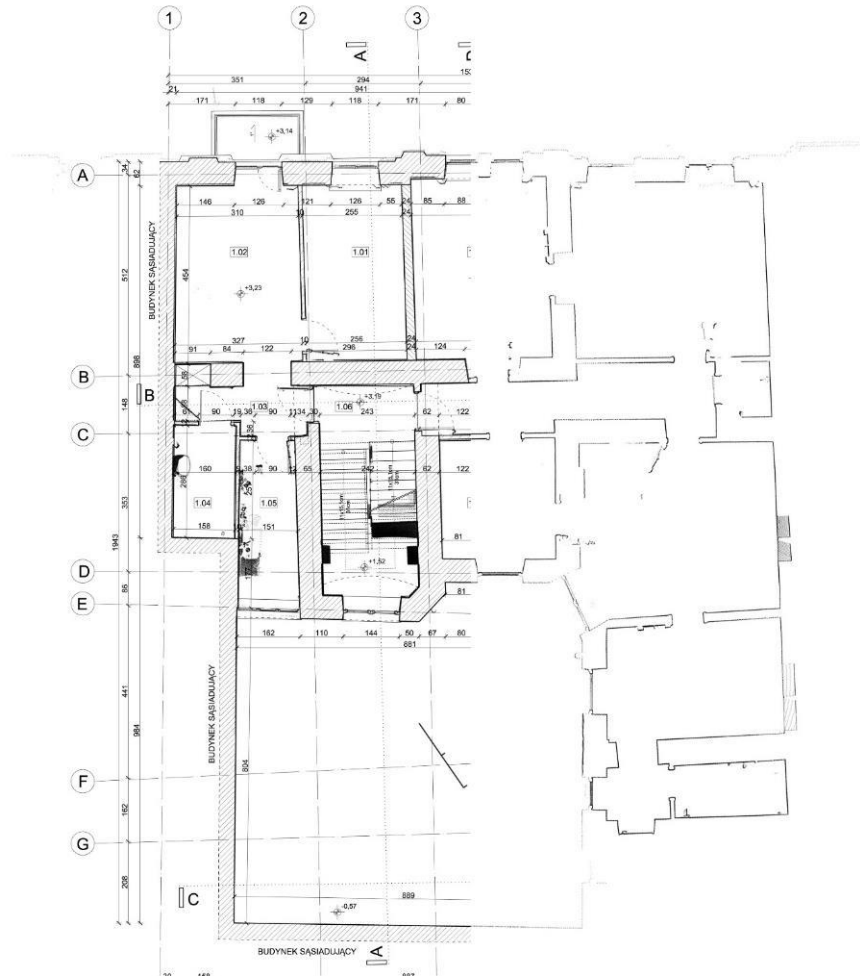




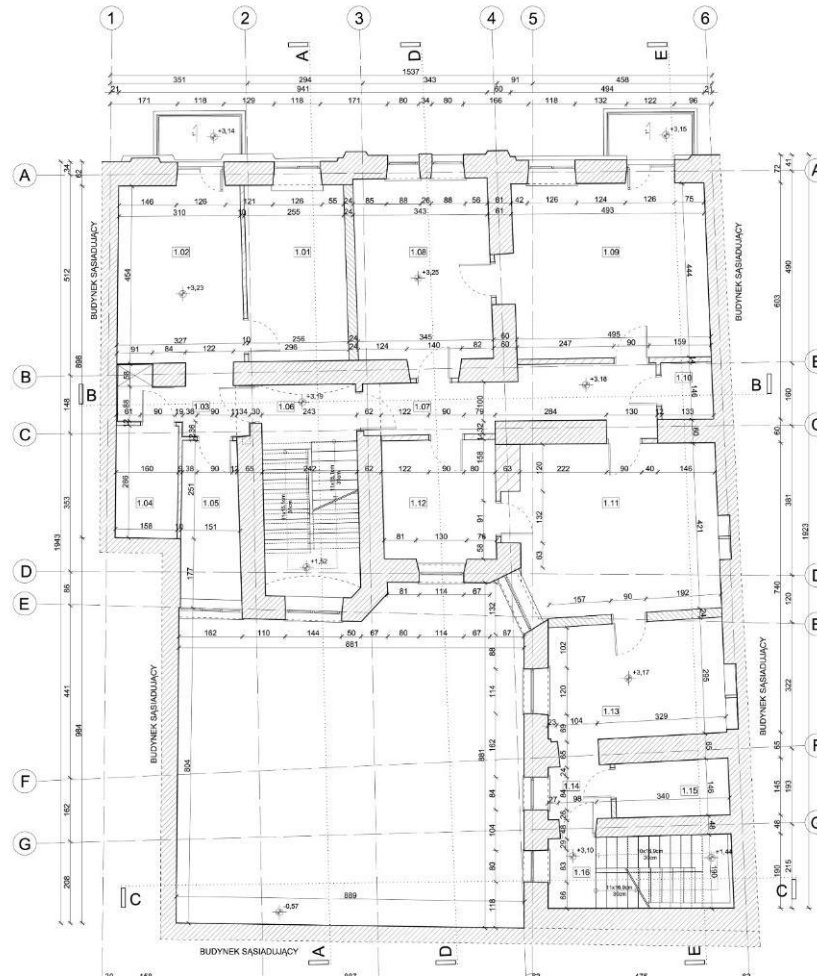


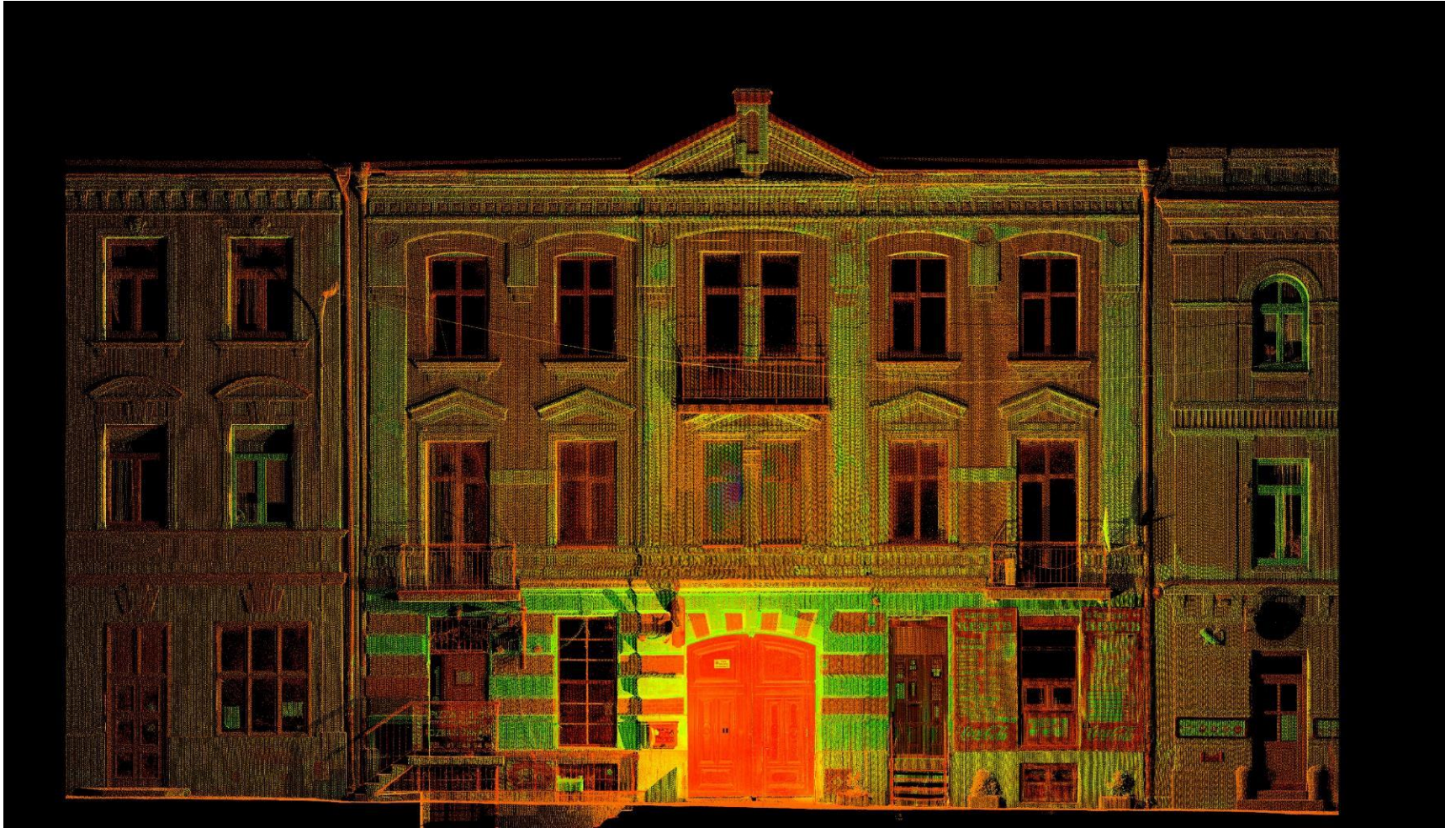
## TENTMENT HOUSE KOŚCIUSZKI 8, LUBLIN

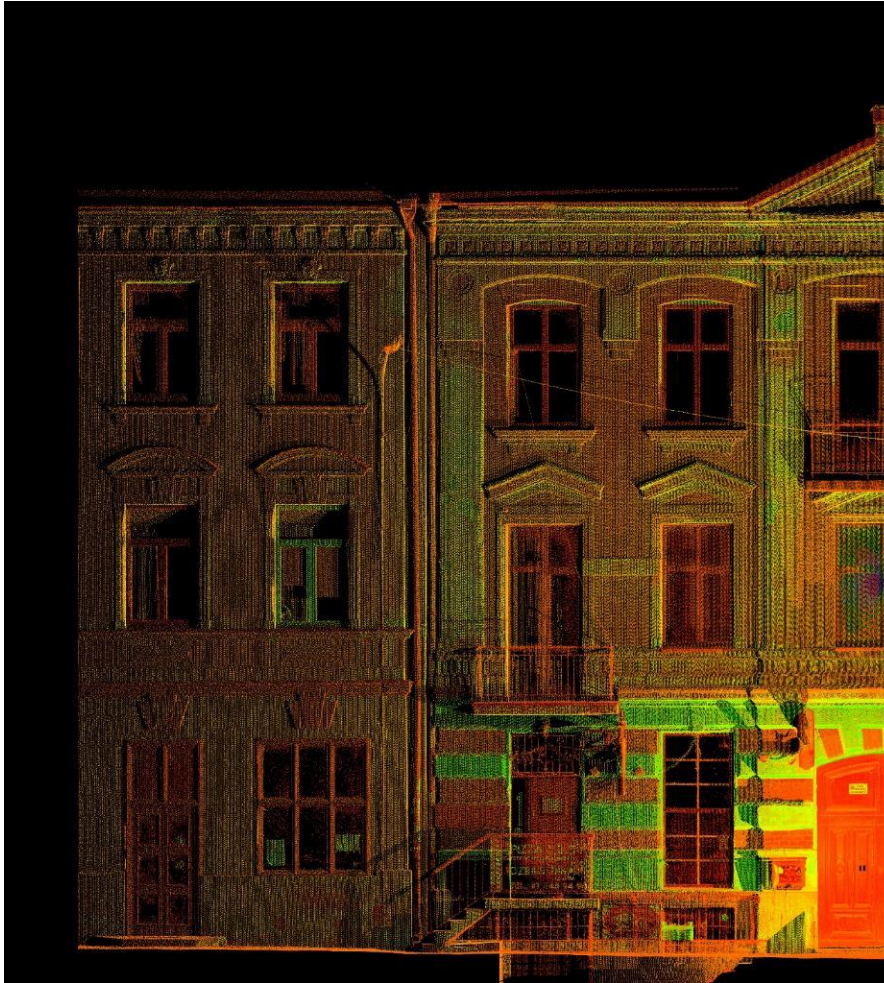




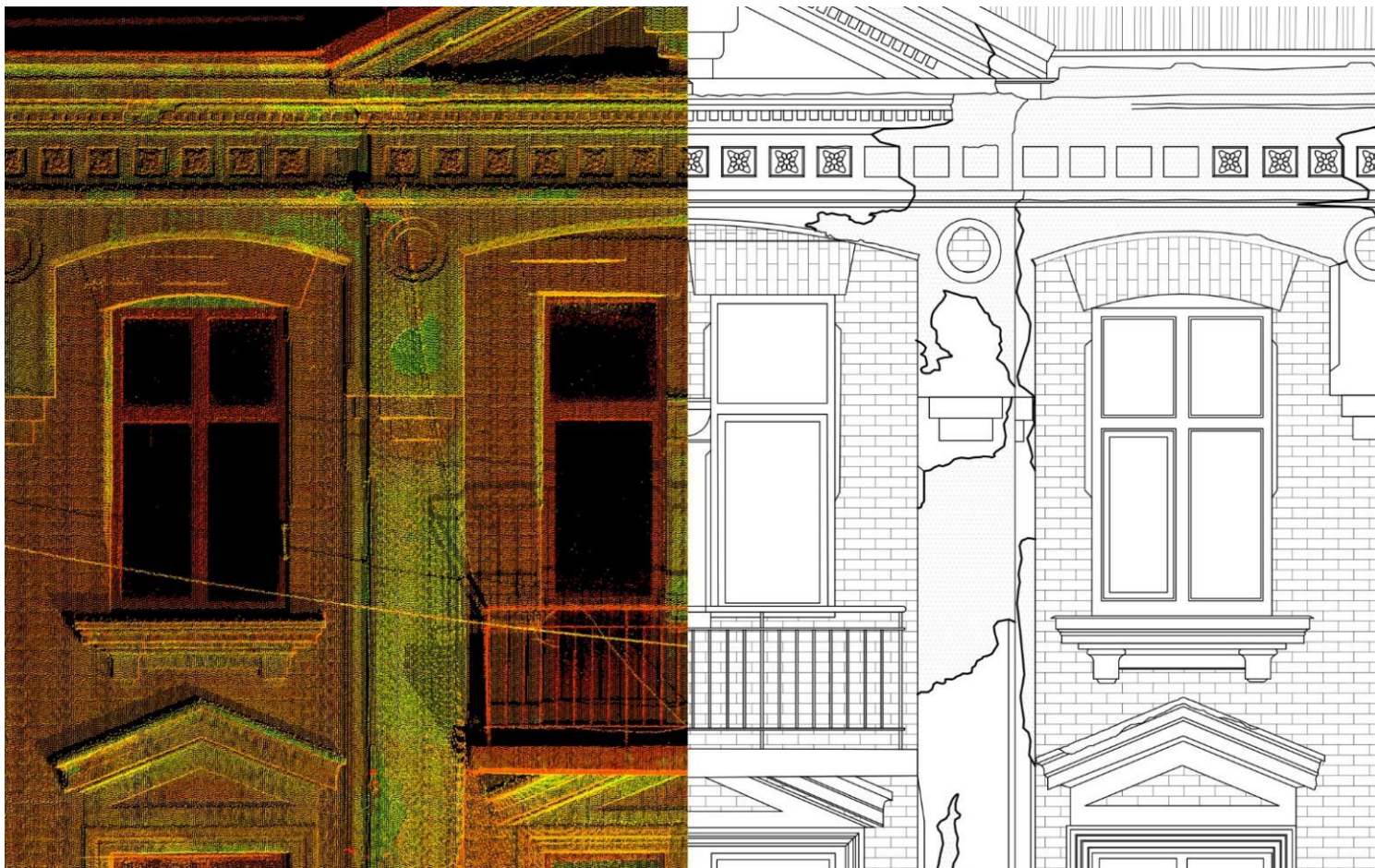








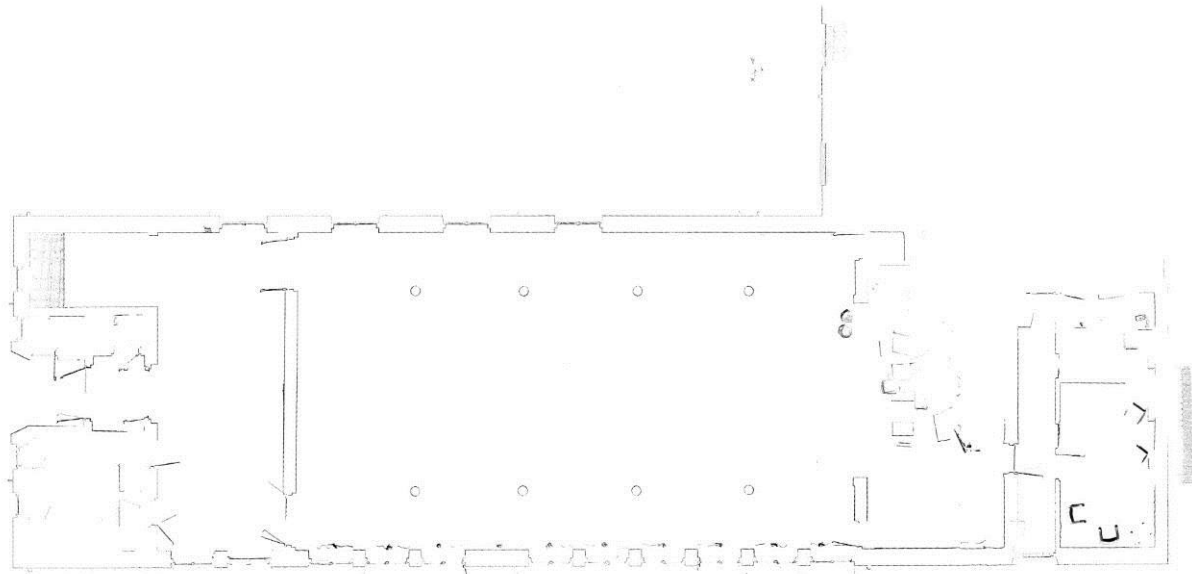


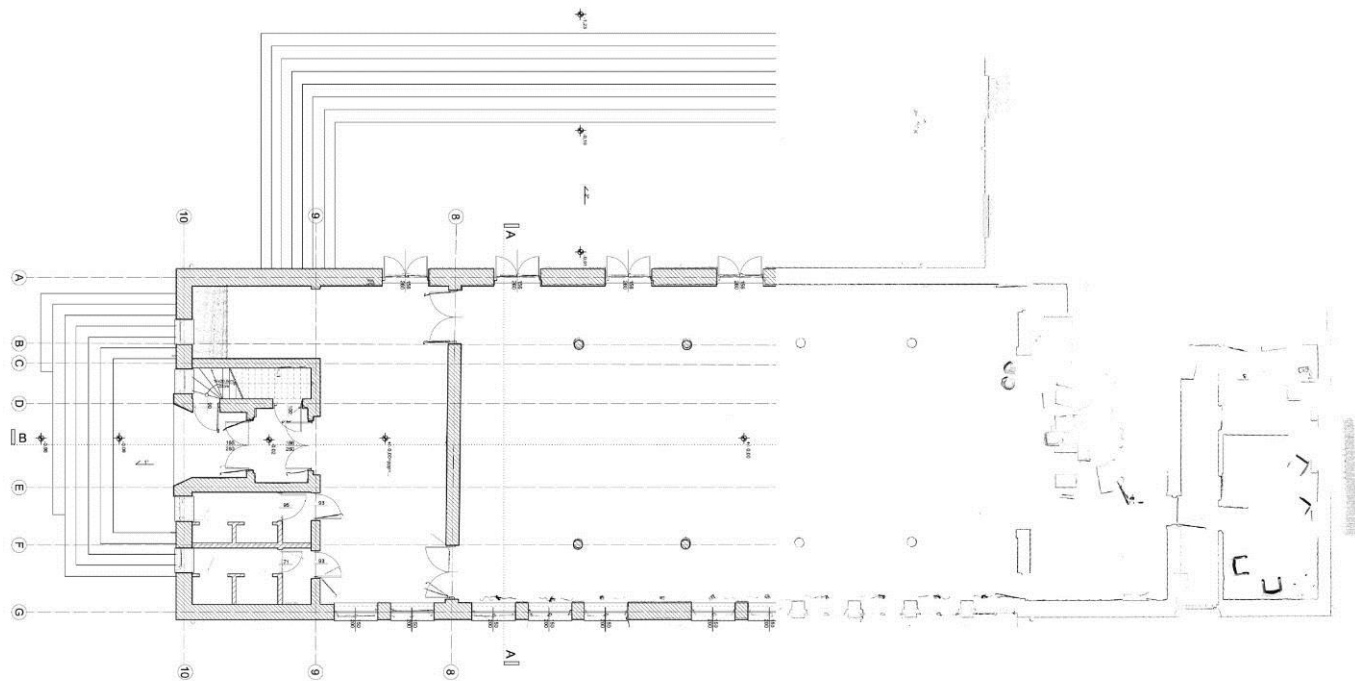




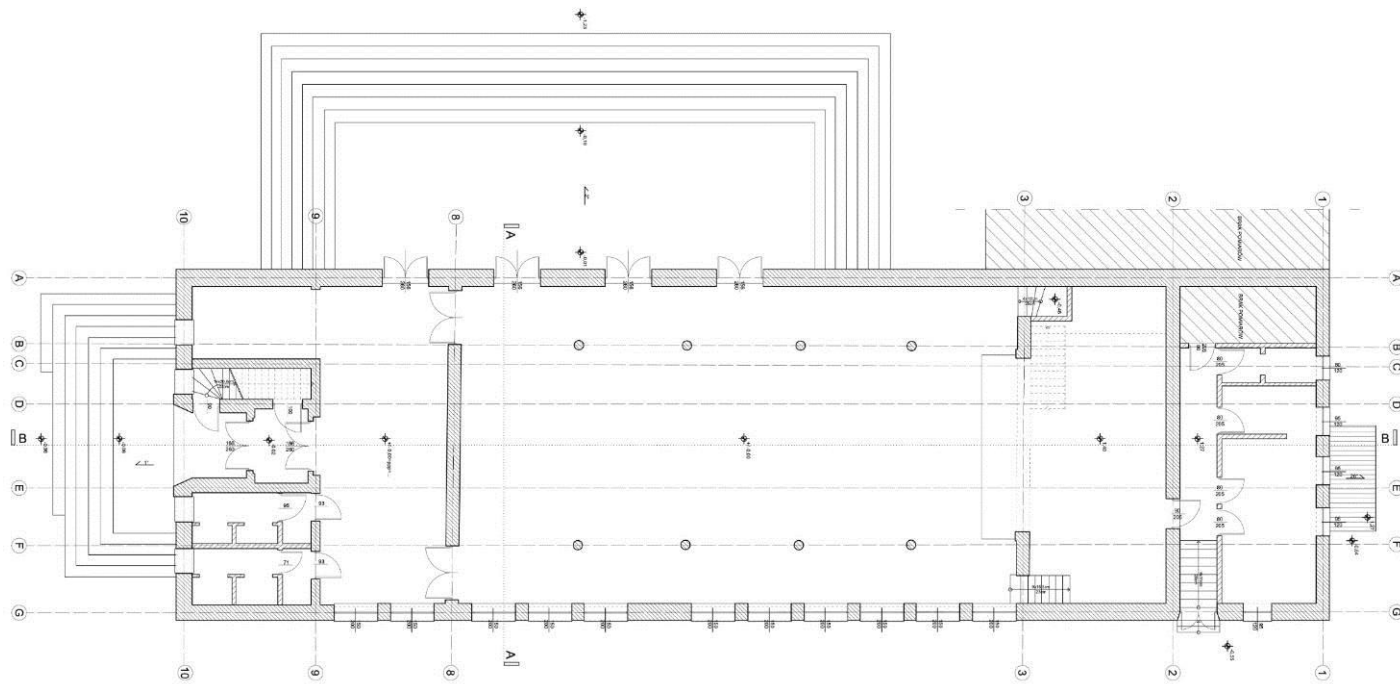
SOURCE: <http://lubelskie.fotopolska.eu/409541,foto.html>

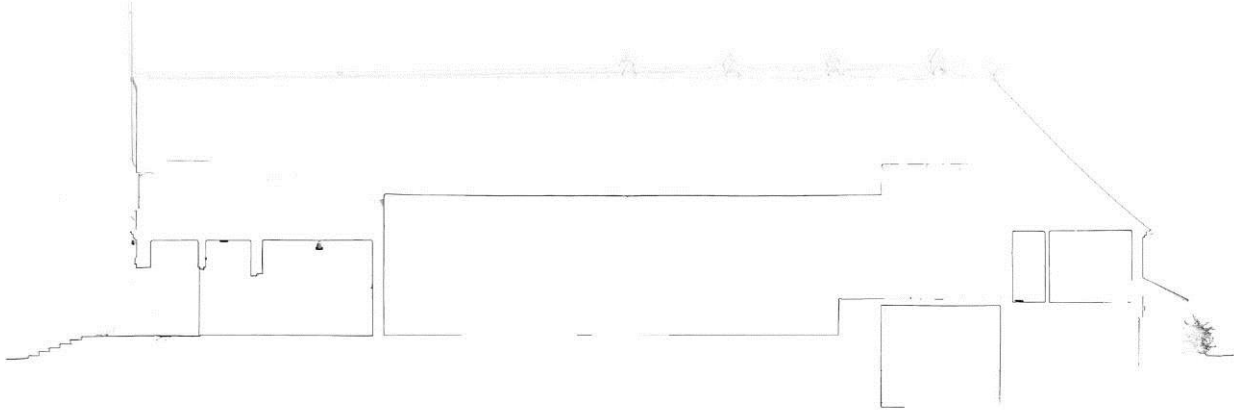
## CLUB ROOM WOŻUCZYN CUKROWNIA

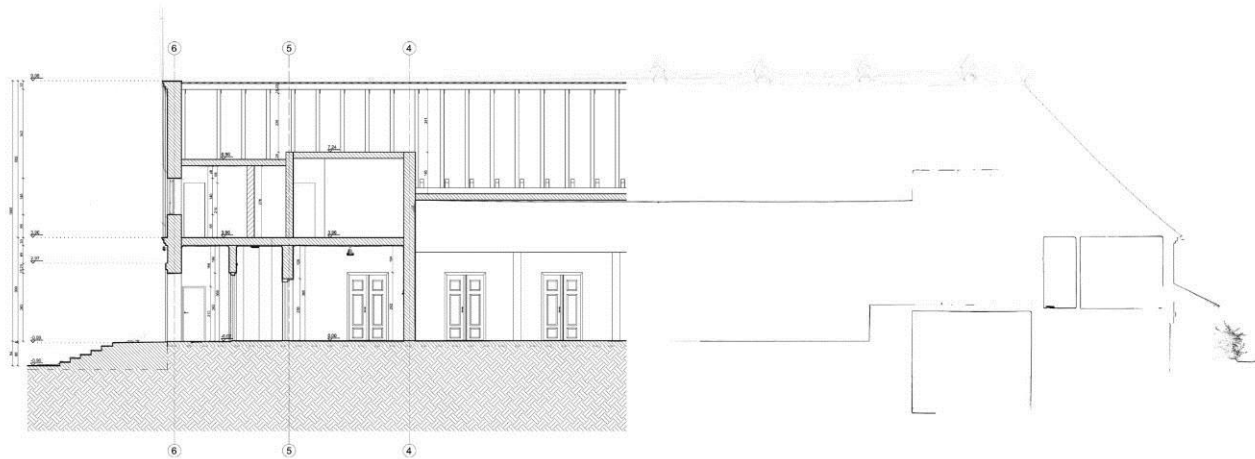


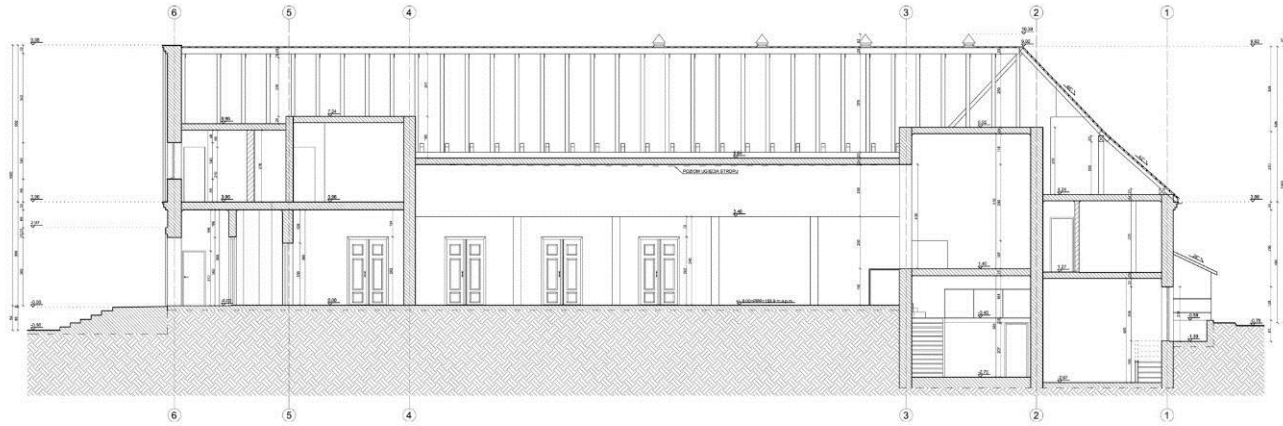


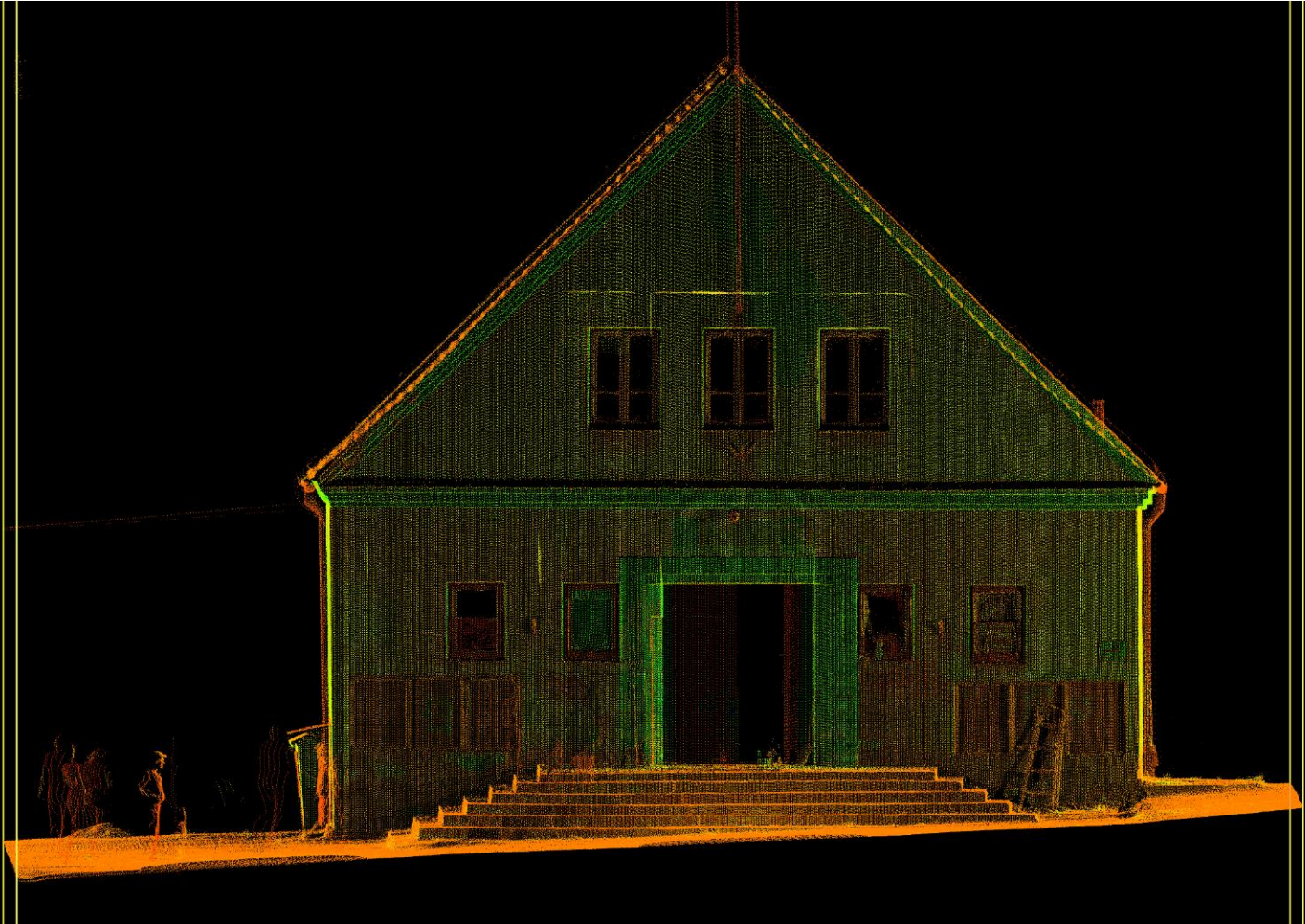


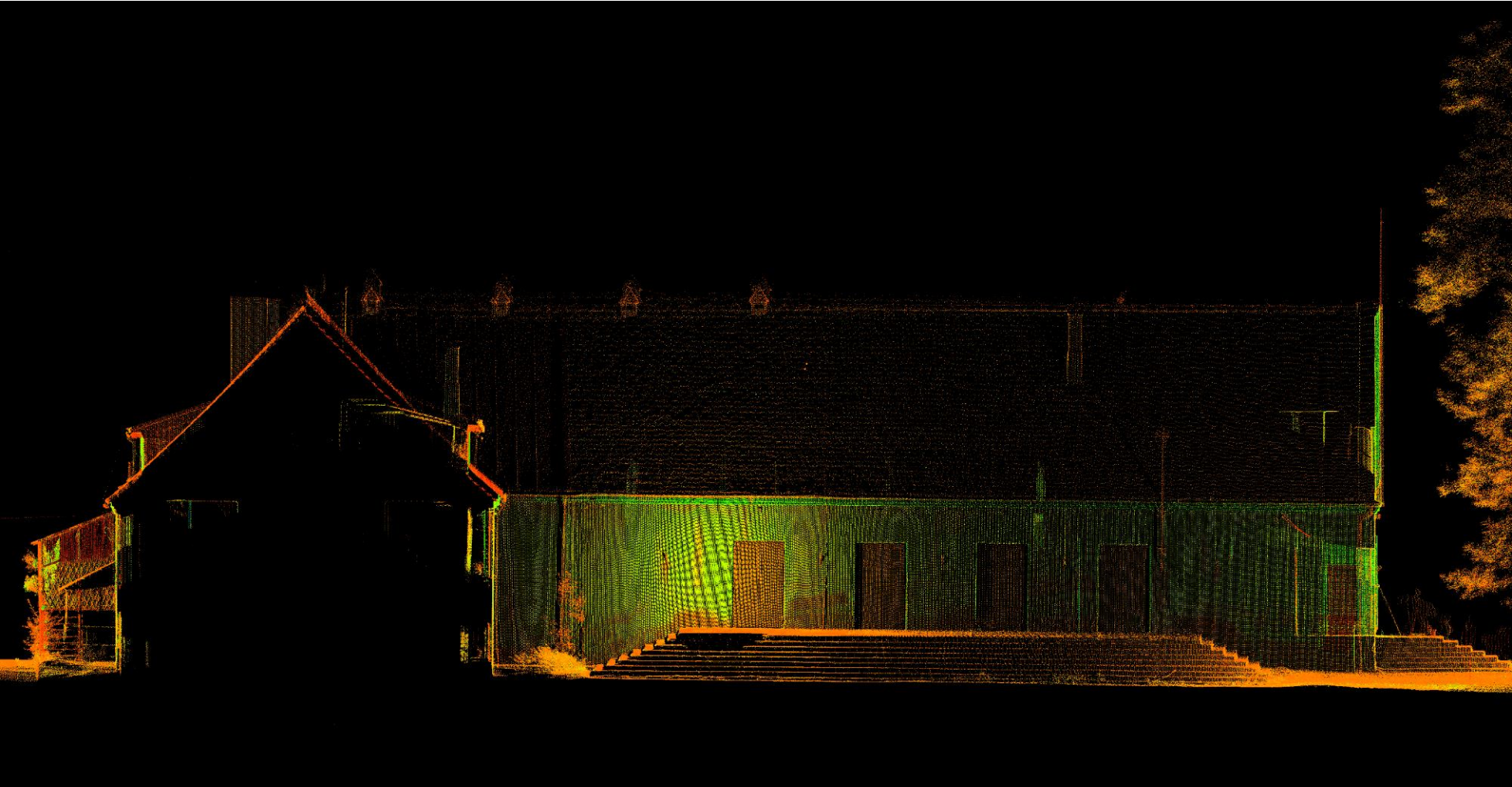


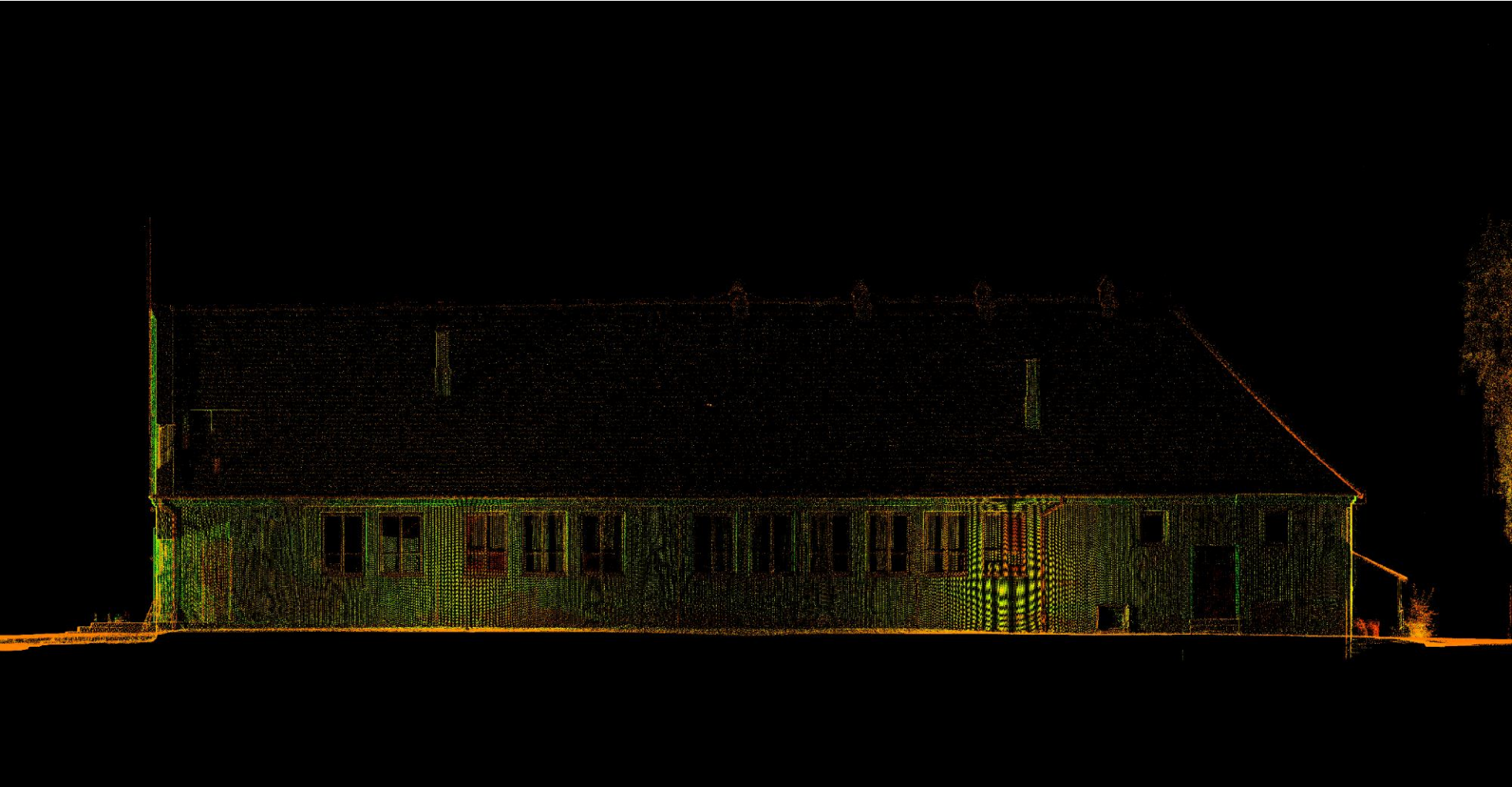














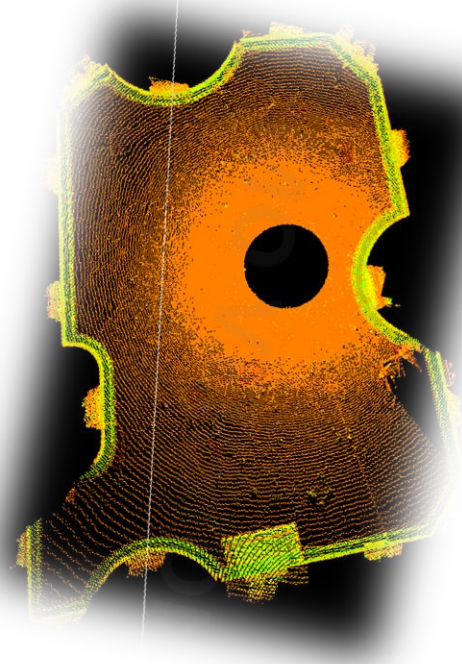
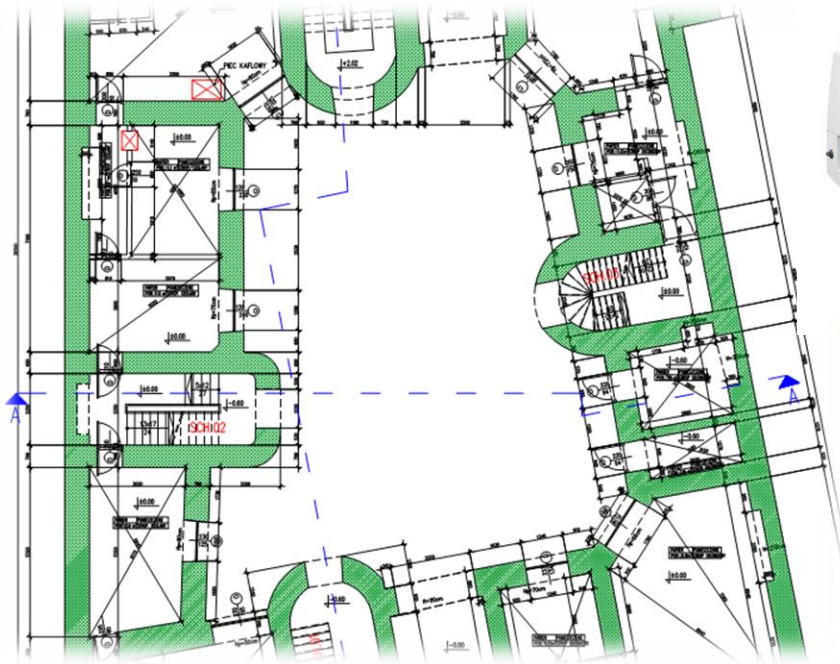


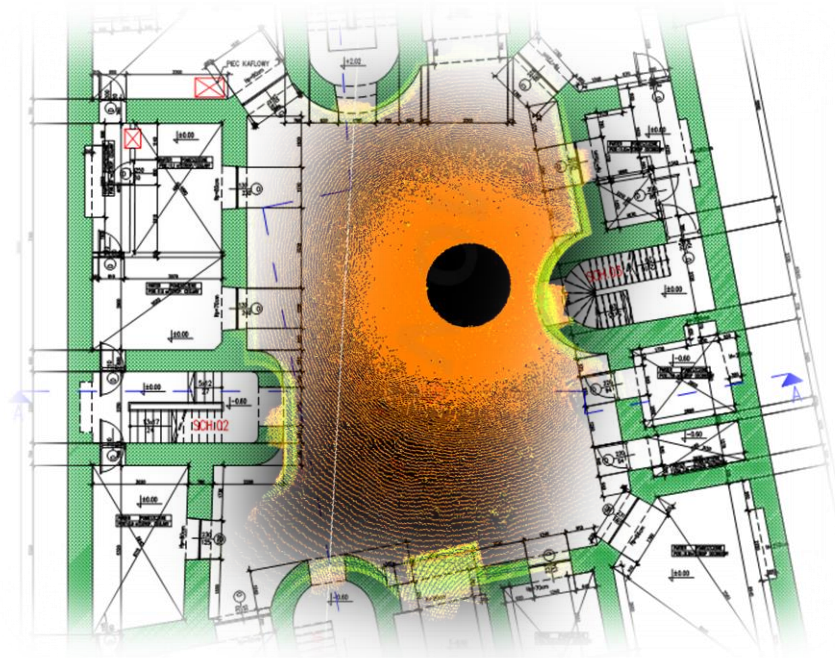


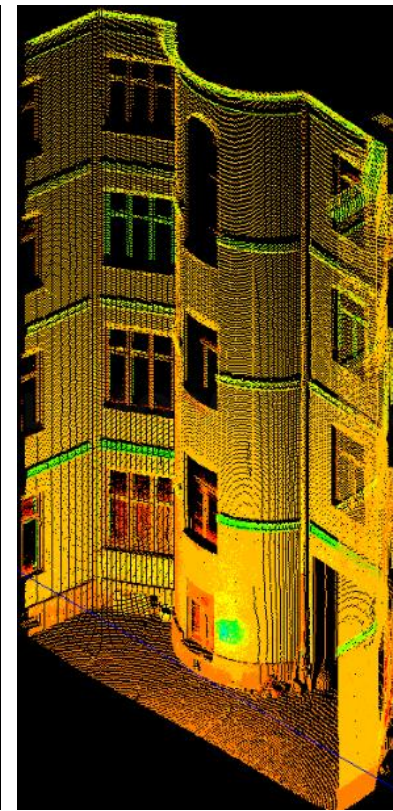
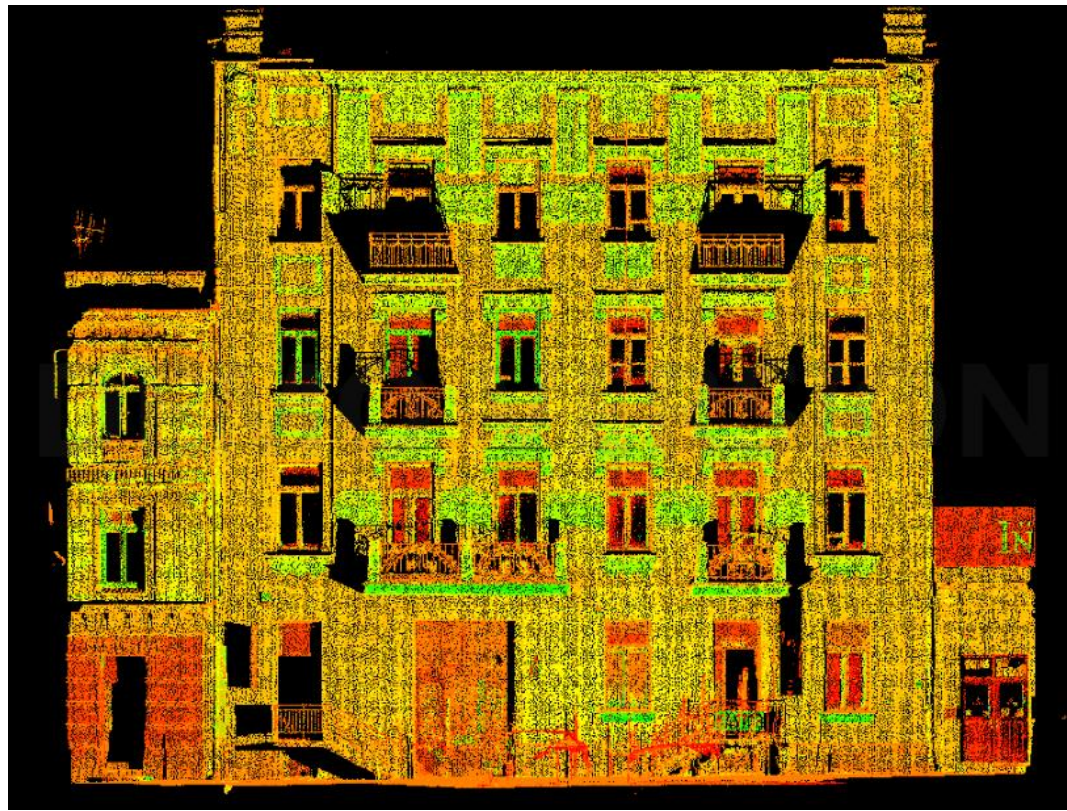
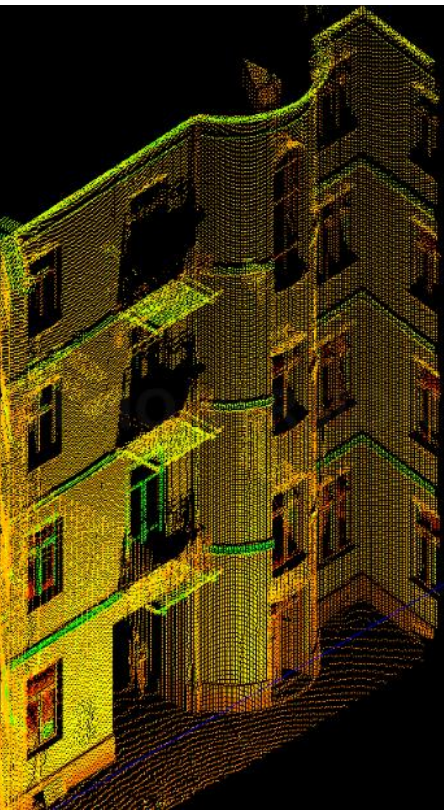


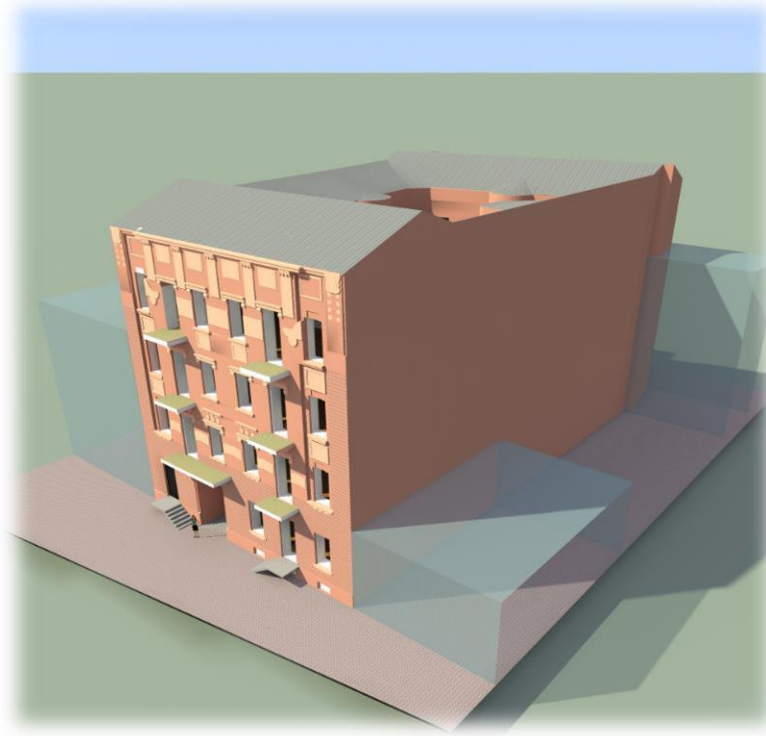
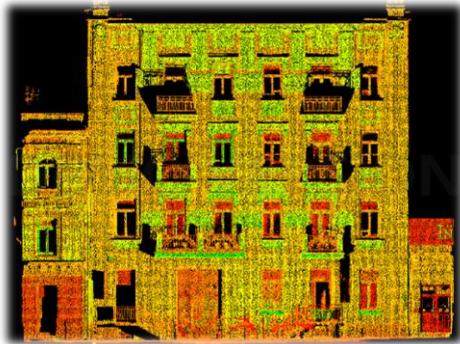


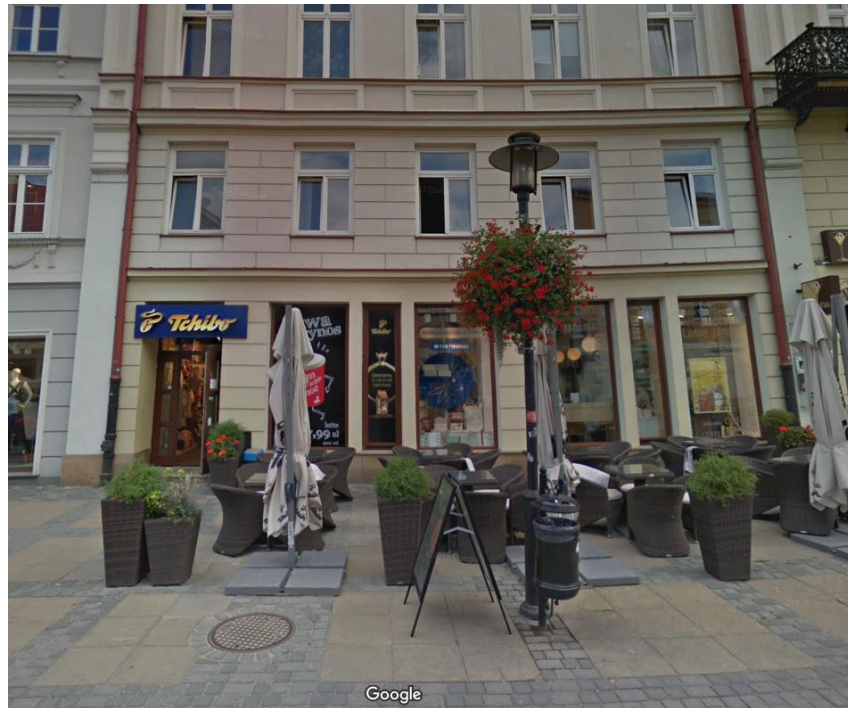
**TENTMENT HOUSE  
PEOWIAKÓW 5, LUBLIN**





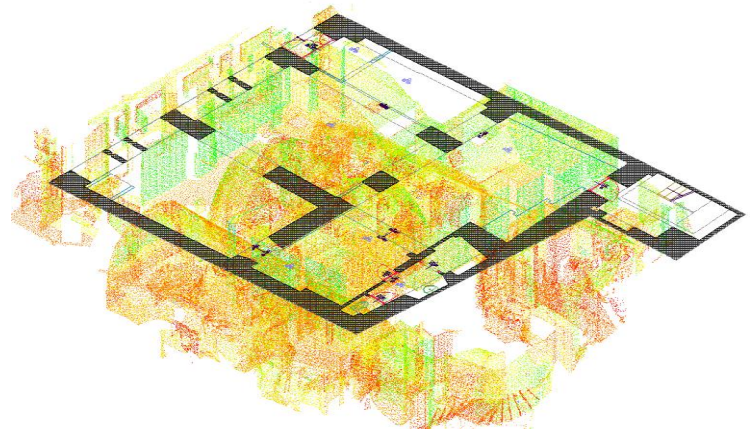


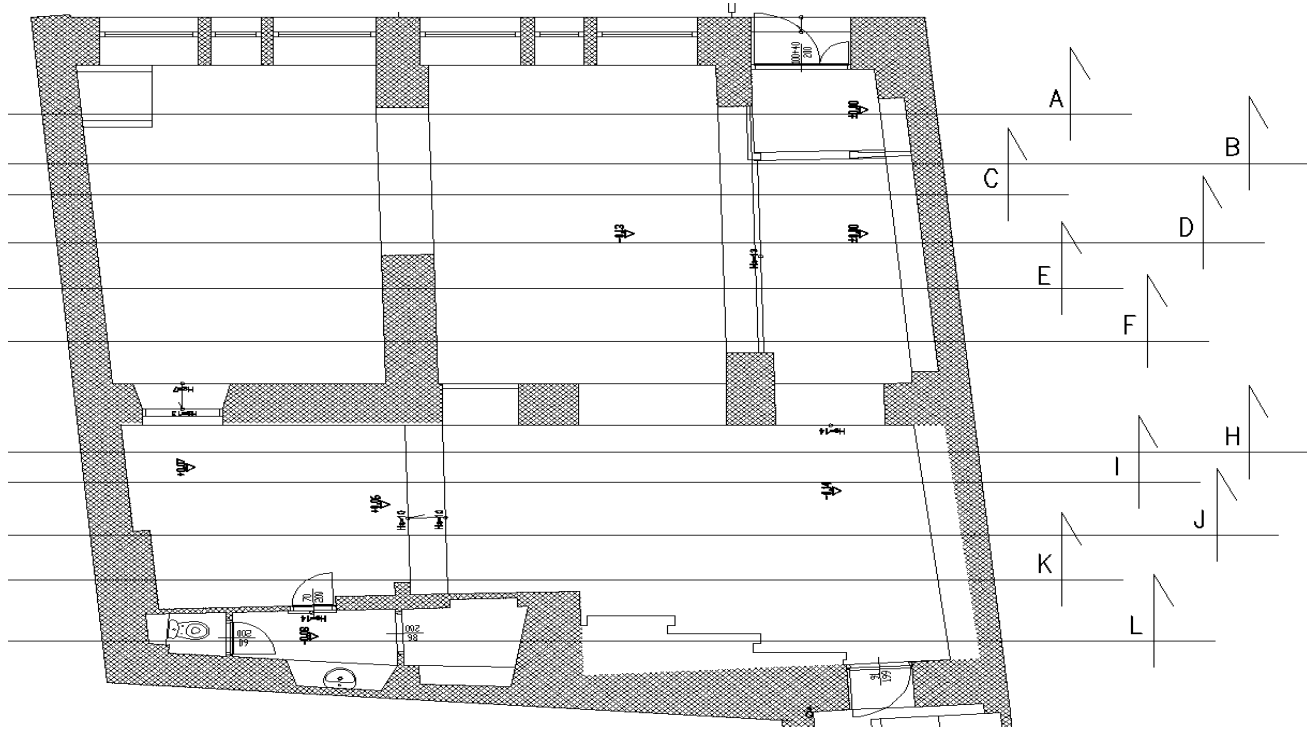


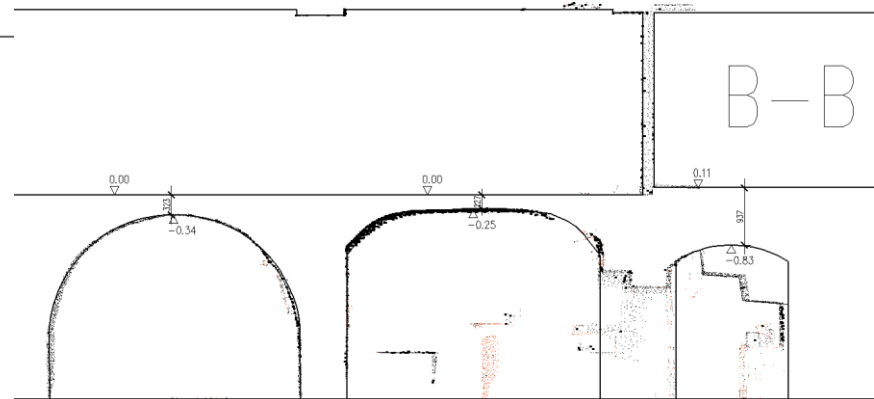
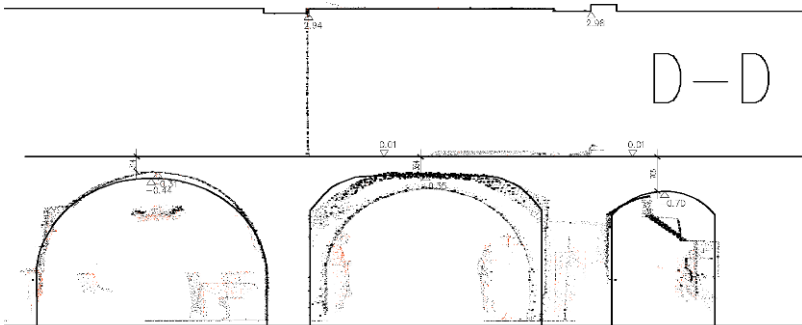
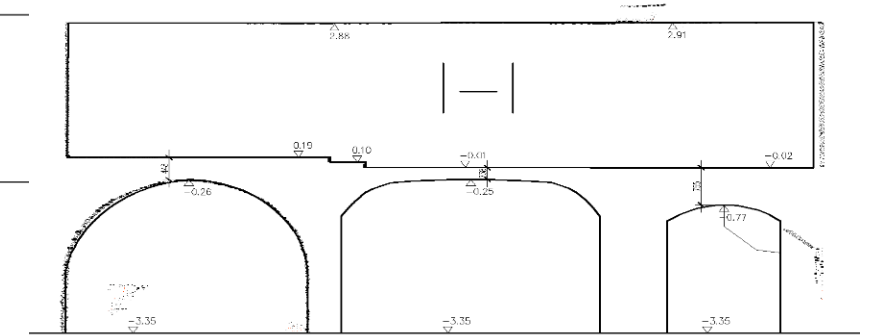


# TENTMENT HOUSE KRAKOWSKIE PRZEDMIEŚCIE 36, LUBLIN















**Project "SURE - Sustainable Urban Rehabilitation in Europe"  
implemented in frames of Erasmus+ Programme  
Key Action 2: Strategic Partnership Projects  
Agreement n° 2016-1-PL01-KA203-026232**

**This publication has been funded within support from the European Commission.**

**Free copy.**

**This publication reflects the views only of the author, and the Commission cannot be held responsible for any use which may be made of the information contained therein.**

**Co-funded by the  
Erasmus+ Programme  
of the European Union**

