

COURSE:

Name:

Date:

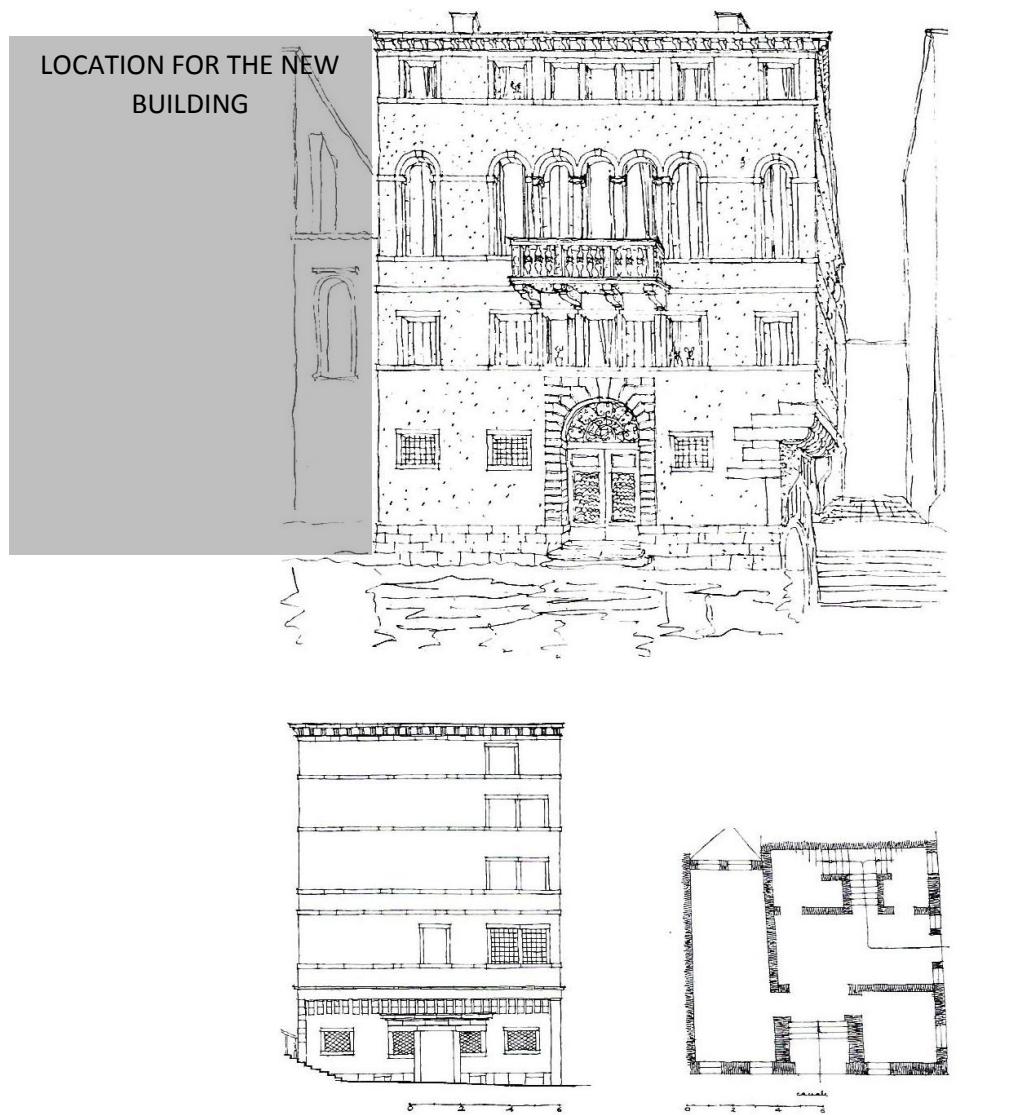
School year:

EXERCISE 2

The construction of a new building is being planned for the adjacent plot to a Venetian building which date from the end of XVI century. The main façade will face a canal.

Please, select and describe the most suitable foundations system for the case. Explain briefly the special preventive measures to take into account.

The available documents with architectural information for the existing building are the following drawings: front elevation, side elevation and floor plan.





Project "SURE - Sustainable Urban Rehabilitation in Europe"
implemented in frames of Erasmus+ Programme
Key Action 2: Strategic Partnership Projects
Agreement n° 2016-1-PL01-KA203-026232

This publication has been funded within support from the European Commission.

Free copy.

This publication reflects the views only of the author, and the Commission cannot be held responsible for any use which may be made of the information contained therein.

**Co-funded by the
Erasmus+ Programme
of the European Union**

