



INVENTORY AND SURVEY OF HISTORICAL BUILDINGS

INVENTORY STANDARDS



Erasmus+

SURVEY OF HISTORICAL BUILDINGS

*KNOWLAGE
REVIEW*

INVENTORY

IN SITU TESTS

LABORATORY TESTS

SURVEY OF HISTORICAL BUILDINGS

*KNOWLAGE
REVIEW*

LABORATORY TESTS

INVENTORY

IN SITU TESTS

THE SCOPE OF INVENTORY

The scope of the inventory is not clearly defined and depends to a large extent on the purpose for which it is drawn up.

It should also be remembered that an integral part of the measurement and drawing documentation is the descriptive part, which consists of a description of the measurement methods and the characteristics of the object. It is also necessary to make photographic documentation.

THE SCOPE OF INVENTORY

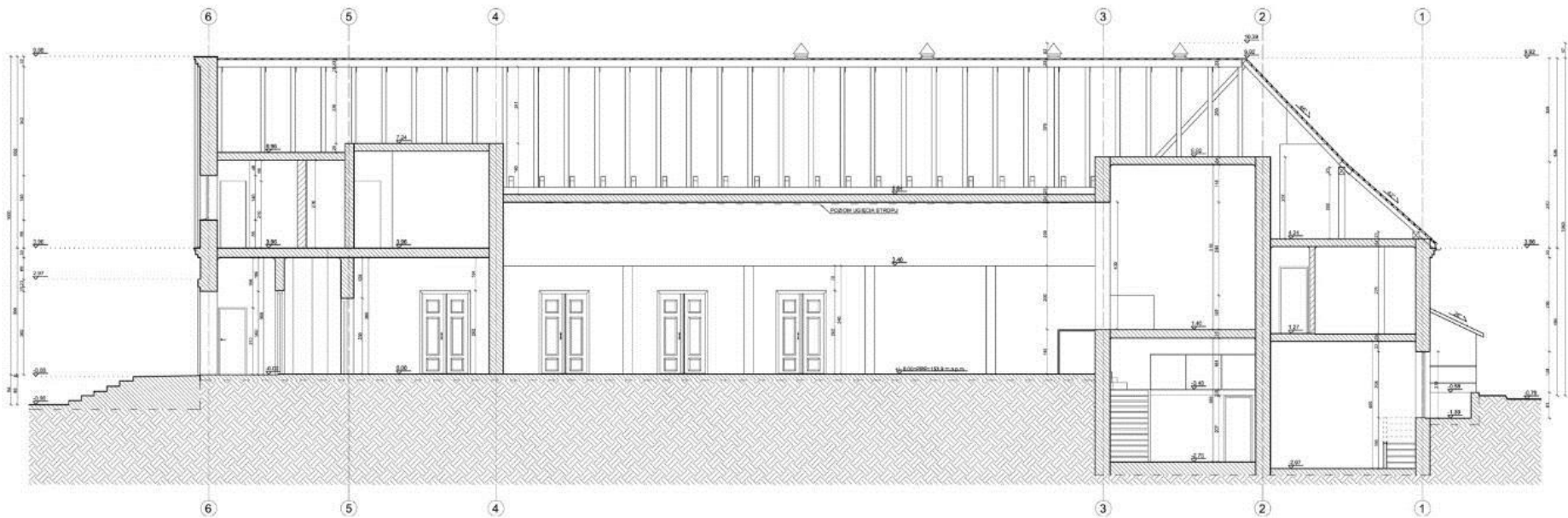
Inventory consists of the following parts:

1. Situational plan in a scale of 1: 500 with the building, along with stairs, terrace, sidewalk, garbage, well, cesspool, fencing, underground and ground connections and neighboring buildings,

THE SCOPE OF INVENTORY

Inventory consists of the following parts:

3. Cross-sections through all floors with selected heights of characteristic points (elevations of floors, landings of staircases, terraces, roofs and chimneys, cornices, manholes, walls and ground level).



THE SCOPE OF INVENTORY

Inventory consists of the following parts:

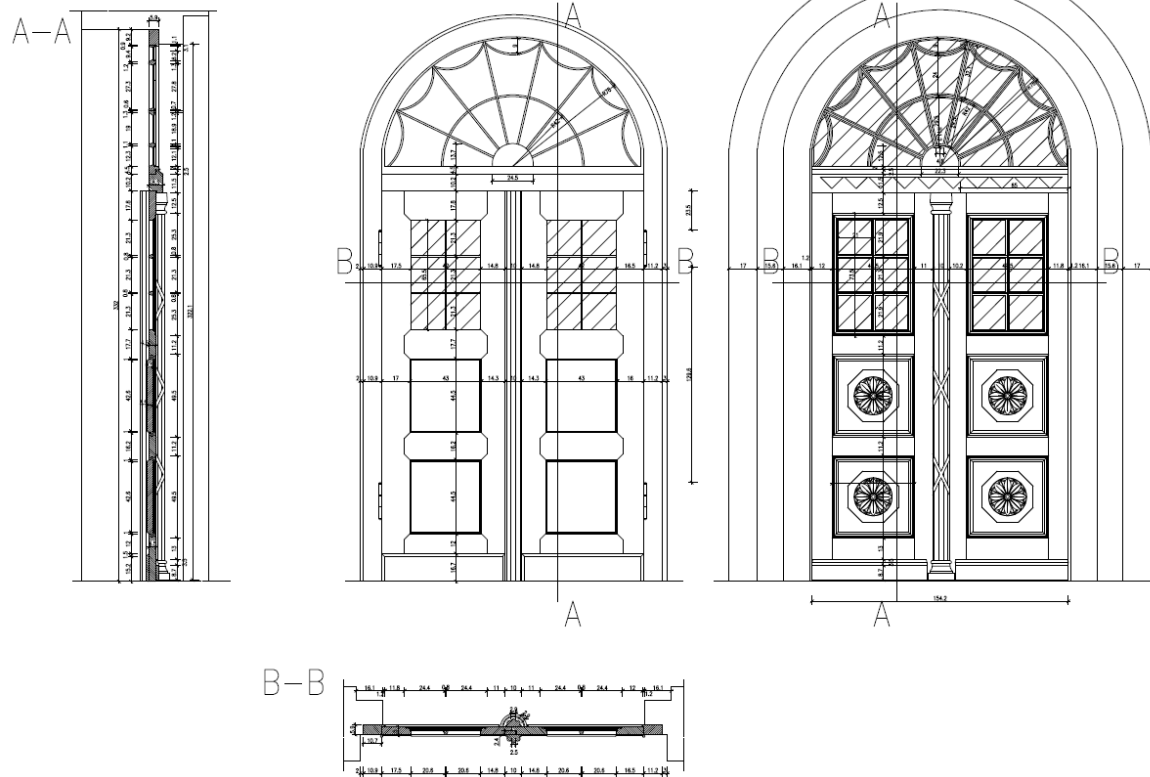
4. All facades of the building.



THE SCOPE OF INVENTORY

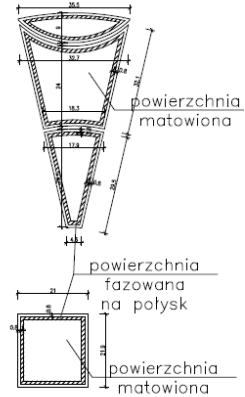
Inventory consists of the following parts:

5. Detailed drawing documentation of historical details.



DRZWI D4

SZCZEGÓŁY SZYBEK
SKALA 1:5



– Zakres prac wg projektu prac konserwatorskich
– wykonać nowe oszklecie szkłem fazyowanym i częściowo matowym szkłem kryształowym

– Próbkę szkła przedstawić do zatwierdzenia w WUOZ Olsztyn

THE SCOPE OF INVENTORY

Inventory consists of the following parts:

6. Photographic documentation.



THE SCOPE OF INVENTORY

Inventory consists of the following parts:

6. Photographic documentation.



THE SCOPE OF INVENTORY

Inventory consists of the following parts:

6. Photographic documentation.



THE SCOPE OF INVENTORY

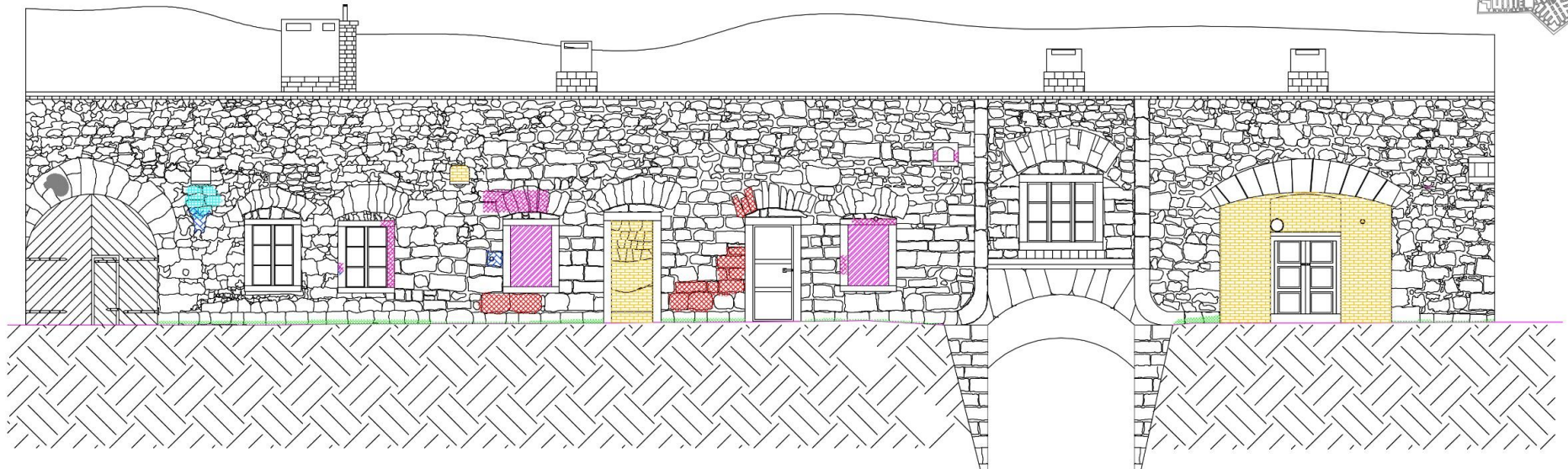
Inventory consists of the following parts:

7. Graphic damage documentation

ELEWACJA PÓŁNOCNO-ZACHODNIA

LEGENDA

-  korozja biologiczna
-  tymczasowe wypełnienie otworu okiennego
-  ubytek spoinowania
-  ubytek w materiale konstrukcyjnym
-  uszkodzenia elementów architektonicznych
-  uszkodzenia na powierzchni kamienia
-  uszkodzenia tynku
-  uzupełnienia murowane wtórne
-  uzupełnienia wtórne



THE SCOPE OF INVENTORY

Inventory consists of the following parts:

8. Technical description containing basic information about the object,
9. Description of materials from which individual building elements were made.

LIST OF DRAWINGS

The scale of the inventory is different depending on the complexity of the object, the number of details and the purpose in which it is performed.

LIST OF DRAWINGS

Brick buildings - scale 1:50;

If the drawings are to be attached only to the cards, they should be made in a schematic manner taking into account only the basic dimensions. These studies can be made even on a 1: 100 scale, due to the low degree of accuracy;

Measuring and drawing documentation made for research and conservation needs should be prepared in a much more precise way. The use of 1:50 scale results in greater accuracy of the drawing. Both cross-sections and elevations should be detailed, which is difficult when using a 1: 100 scale.

Details should be made on such a scale that you can accurately show all the elements included in it while maintaining a high readability of the drawing, therefore the appropriate scale is 1: 1, 1:10 or 1:20.

It is therefore concluded that the more extensive the research objective, the more detailed the documentation should be.

LIST OF DRAWINGS

It is therefore concluded that the more extensive the research objective, the more detailed the documentation should be.



**Project "SURE - Sustainable Urban Rehabilitation in Europe"
implemented in frames of Erasmus+ Programme
Key Action 2: Strategic Partnership Projects
Agreement n° 2016-1-PL01-KA203-026232**

This publication has been funded within support from the European Commission.

Free copy.

This publication reflects the views only of the author, and the Commission cannot be held responsible for any use which may be made of the information contained therein.

**Co-funded by the
Erasmus+ Programme
of the European Union**

